

PLANTING NOTES

1. Create a planting mix comprised of 2/3 screened loam and 1/3 humus such as leaf compost. Planting mix shall be free of weeds, stones and debris larger than 1/2", and shall not contain toxic substances harmful to plant growth. Amend with 'Plantone' organic fertilizer, at the rate recommended by manufacturer.
2. Prior to planting the contractor shall establish finished grades within future planting areas marked as such.
3. Loam shall be uniform in composition, free of stones and debris larger than 1/2", and shall not contain toxic substances harmful to plant growth.
4. Plant beds shall be dug to 18" depth and back filled with the planting mix specified above.
5. Container/B&B plant pits shall be dug three times the width of the root ball and as deep as the ball. Plant pits and planting beds shall be backfilled with specified planting mix in lifts to avoid air pockets in backfill. Slow release fertilizer packets shall be installed with all plant materials at time of planting. Follow manufacturer's instructions for fertilizers.
6. All plant materials shall conform to the American Standard for Nursery Stock guidelines published by the American Association of Nurserymen, Inc. Plants shall be healthy and without damage to roots, trunk, branches and leaves with a habit typical of the species unless otherwise specified.
7. All plant material to be set plumb, and at the same relationship with finish grade as it bore in nursery.
8. All burlap, wire baskets and other materials attached to plants shall be removed prior to planting. Care shall be taken not to break or disturb the root ball of plants.
9. Install weed control fabric at shrub beds (not sod). Three inches (3") of naturally dark brown aged pine bark mulch shall be spread over all plant beds and sod. Mulch shall not touch trunk of shrubs and trees.
10. All plants shall be watered immediately after planting, and receive one inch of water per week thereafter. The contractor shall maintain all plants (keeping in a healthy growing condition) for a minimum of thirty days after the completion of plant installation or until acceptance of the completed project by owner.
11. Plants shall be guaranteed for a period of 1 year after project acceptance and shall be in satisfactory growth at the end of the guarantee period. The contractor shall be responsible to remove all failing plant materials, and replace them with the same kind and size of material as specified in the plant list.
12. Lawn and meadow seed areas shall receive 6" of loam. Loam shall be uniform in composition, free of stones and debris larger than 1/2", and shall not contain toxic substances harmful to plant growth.

PLANT LIST

SYMBOL	BOTANICAL NAME	COMMON NAME	QTY.	MIN. SIZE
AA	Amelanchier alnifolia 'Obelisk'	Serviceberry	3	#10
AE	Abelia x 'Edward Goucher'	Glossy Pink Abelia	16	3 GAL.
AR	Acer rubrum 'Red Point'	Red Maple	10	4" CAL.
GM	Geranium macrorrhizum 'Czakov'	Cranesbill	22	1 GAL.
GT	Gleditsia triacanthos 'Shademaster'	Honeylocust	9	4" CAL.
HG	Heuchera 'Gotham'	Coralbells	24	1 GAL.
IG	Ilex glabra 'Shamrock'	Inkberry (Compact)	13	5 GAL.
JV	Juniperus virginiana	Eastern Red Cedar	28	6-7" B&B
LS	Lavender 'Silver Mist'	Lavender	28	1 GAL.
MP	Morella (Myrica) pensylvanica	Northern Bayberry	30	3-4" B&B
PV	Panicum virgatum 'Thundercloud'	Tall Switchgrass	41	2 GAL.
RA	Rhus aromatica 'Gro Low'	Dwarf Fragrant Sumac	14	2 GAL.
SS	Schizachyrium s. 'Standing Ovation'	Bluestem grass	23	1 GAL.
QB	Quercus bicolor	Swamp White Oak	6	4" CAL.



Quercus bicolor (QB) - Swamp White Oak. 50-60'HxW
Juniperus virginiana (JV) - Eastern Red Cedar. 30'Hx10'W



Acer rubrum (AR) 'Redpoint' - Redpoint Maple 45'Hx30'W
Amelanchier alnifolia 'Obelisk' (AA) Columnar Serviceberry - 12-15'Hx3-4'W. June Flowers. Berries in July. Good fall color



Panicum virgatum 'Thundercloud' (PV) - Switchgrass. 7'HxW



Ilex glabra 'Shamrock' (IG): Inkberry. 3-5'HxW Evergreen shrub.



Geranium macrorrhizum 'Czakov' - (GM) Cranesbill 12'Hx2-3'W Semi-evergreen. Spring-summer blooms



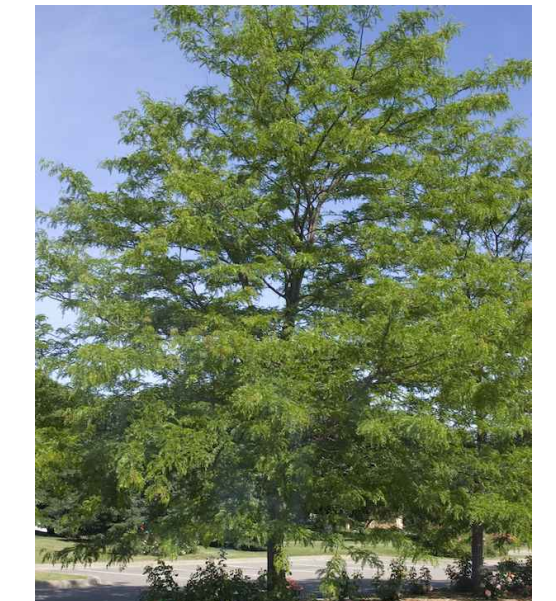
Abelia x 'Edward Goucher' (AE) Semi-evergreen, long blooming. 3-5'HxW



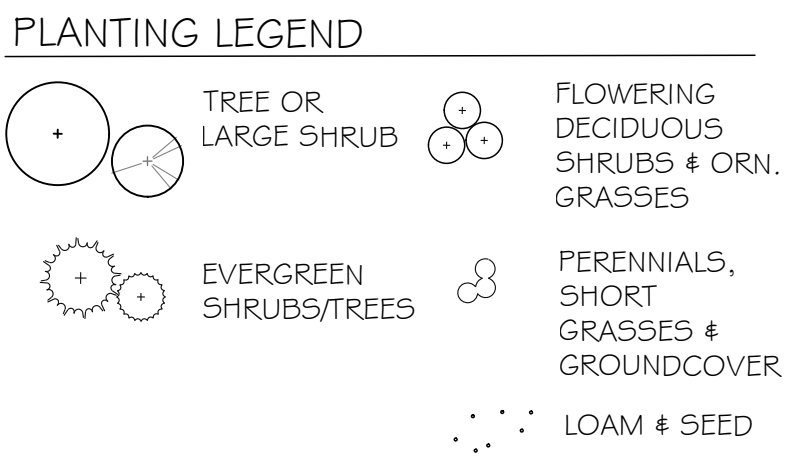
Myrica pensylvanica (MP) - Northern Bayberry 5-10'HxW.



Schizachyrium s. 'Standing Ovation' (SS) Little Bluestem Grass 4'Hx18"W



Gleditsia triacanthos 'Shademaster' (GT) - Honeylocust. Small leaves blow away. Yellow fall foliage.



Rhus aromatica 'Gro Low' (RA) Dwarf Fragrant Sumac. 2'Hx6-8'W. Yellow early spring flowers.



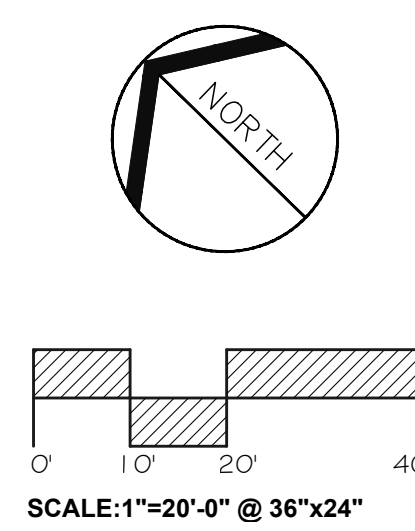
Lavender 'Silver Mist' (LA) 12-18" HxW June-Aug. fragrant blooms. Semi-evergreen



Heuchera 'Gotham' (HG) Coralbells, Yellow blooms all season. 12-18"x24"

Valley Crossing

A.P. 107 NE Lot 402B
Valley Road
Middletown, RI



SCALE: 1"=20'-0" @ 36"x24"
PREPARED FOR
JAMES H. CLAUSEN REVOCABLE TRUST 7D67 VILLA ESTELLE DR. ORLANDO, FL 32819

REVISIONS

1	ENTIRE PLAN	05/23/23
2		
3		
4		
5		
6		
7		

DRAWING TITLE
PLANTING PLAN

DRAWING INFORMATION



November 17, 2022
DATE OF ISSUE
LANDSCAPE PLAN
DESCRIPTION
AS NOTED
PLAN SCALE
112
PROJECT #

DRAWING NUMBER

LI