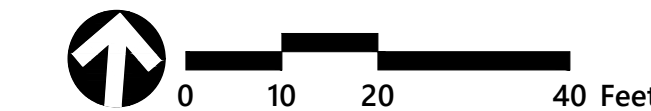


Sign Summary

M.U.T.C.D. Number	Specification Width	Specification Height	Desc.
R7-8	12"	18"	
R7-8P	12"	6"	
RESIDENT PARKING ONLY	12"	18"	
RESIDENT PARKING ONLY LEFT	12"	18"	
RESIDENT PARKING ONLY RIGHT	12"	18"	

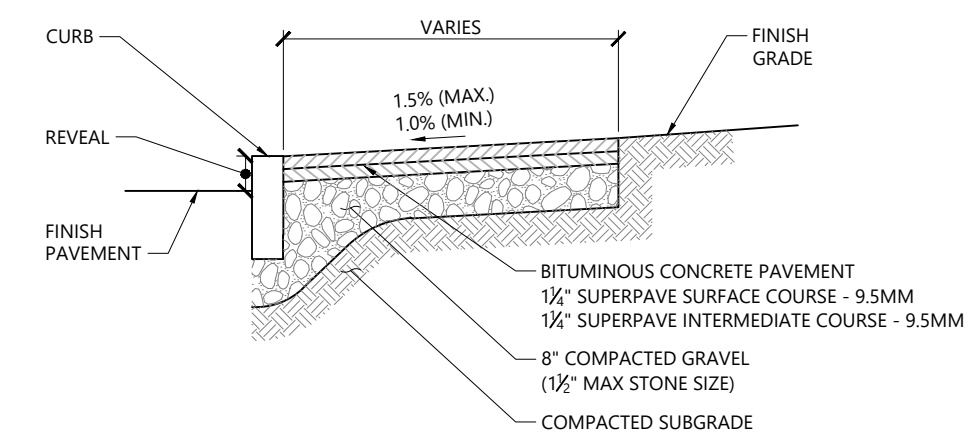
Sign Summary 1/16
N.T.S. Source: VHB LD_701



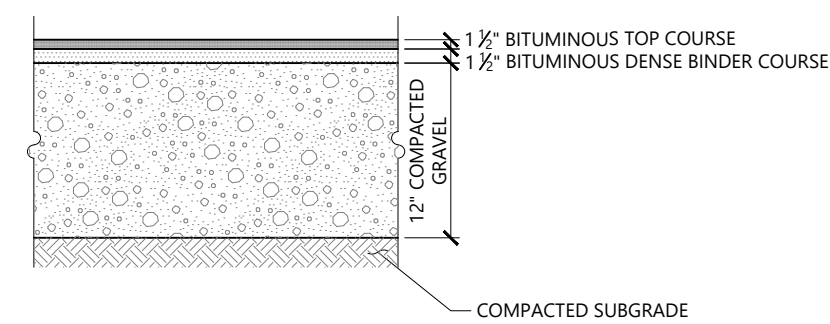
PERMIT SET
NOT FOR CONSTRUCTION
Revision REV1 - TRC COMMENTS
Date 2023-03-30
Title LAYOUT AND MATERIALS PLAN
Scale 1" = 20'
Drawn By DDH

C2.00

Contractor to verify all dimensions in field and inform Architect of any discrepancies before starting work.

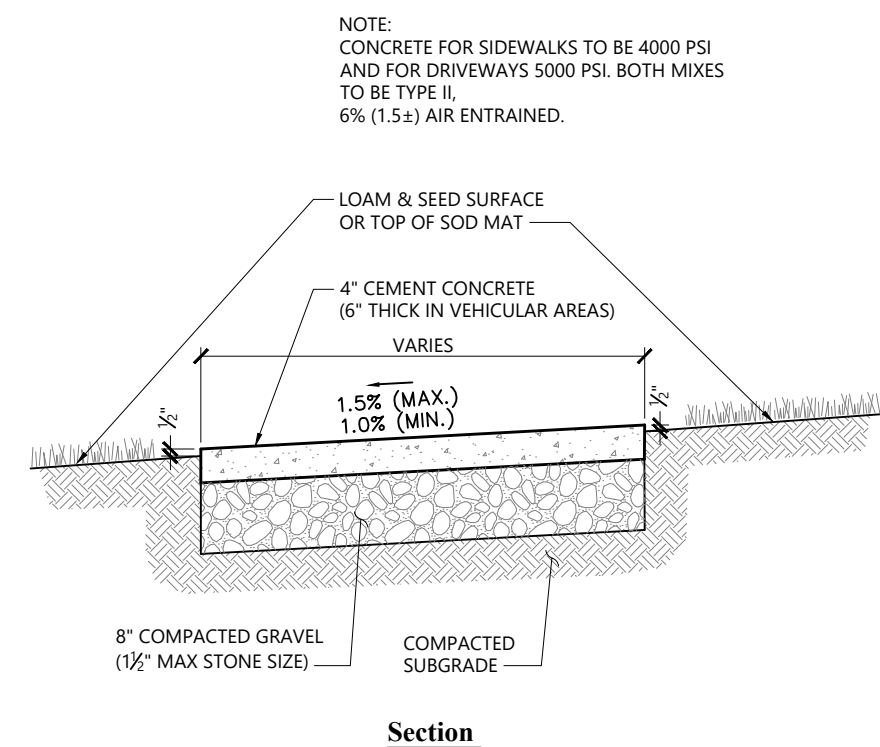


Bituminous Concrete Sidewalk 3/20
N.T.S. Source: VHB REV LD_422



STANDARD DUTY FLEXIBLE PAVEMENT

Bituminous Concrete Pavement Sections 1/16
N.T.S. Source: VHB REV LD_430

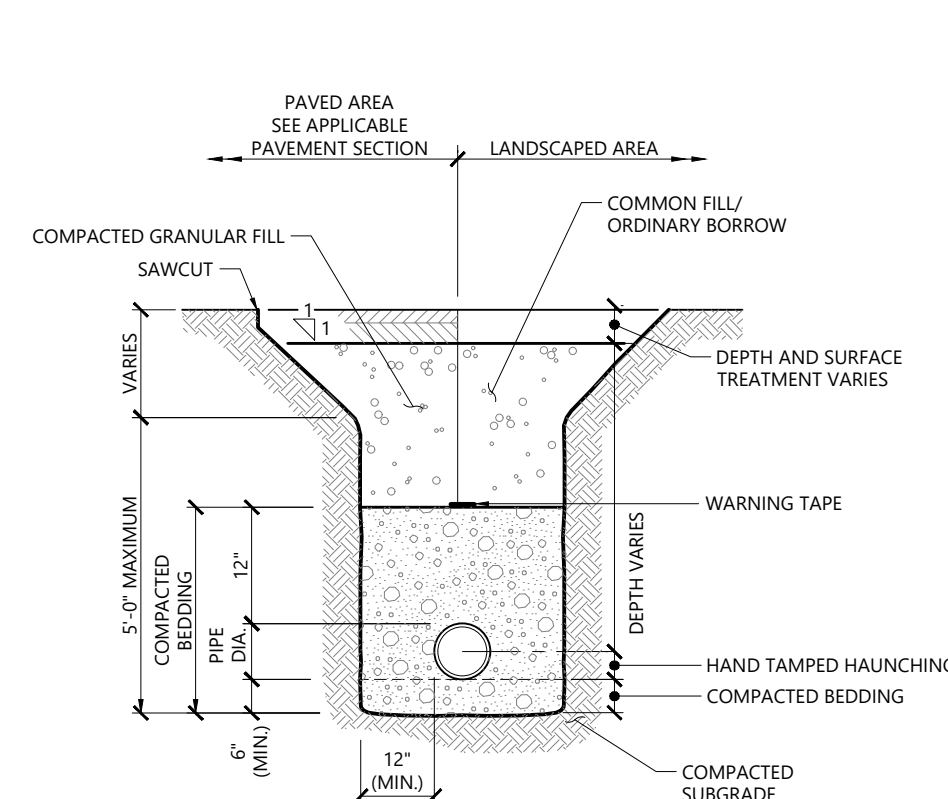


Section

NOTES

1. PROVIDE EXPANSION JOINTS AT MIN. 30 FT. O.C. WITH PRE-FORMED JOINT FILLER.
2. PROVIDE TOOLED CONTROL JOINTS AT 6' O.C.
3. PROVIDE BROOM FINISH IN DIRECTION PERPENDICULAR TO SIDEWALK DIRECTION.

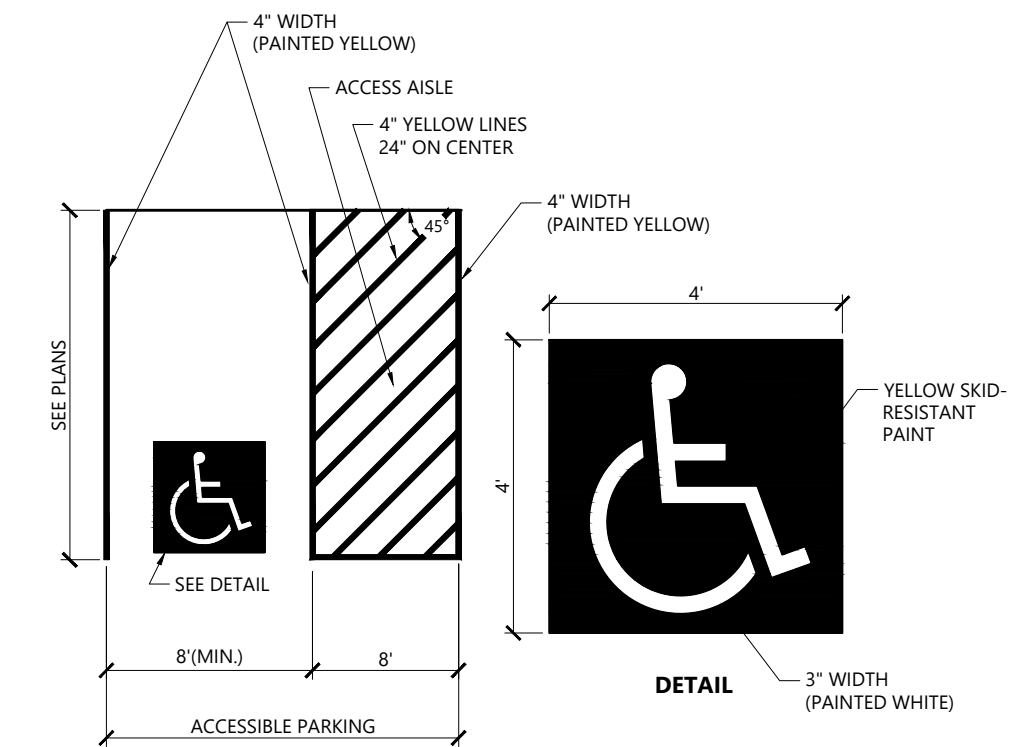
Concrete Sidewalk in Landscape Area 1/16
N.T.S. Source: VHB REV LD_426



NOTES

1. WHERE UTILITY TRENCHES ARE CONSTRUCTED THROUGH DETENTION BASIN BERMS OR OTHER SUCH SPECIAL SECTIONS, PLACE TRENCH BACKFILL WITH MATERIALS SIMILAR TO THE SPECIAL SECTION REQUIREMENTS.
2. USE METALLIC TRACING/WARNING TAPE OVER ALL PIPES.

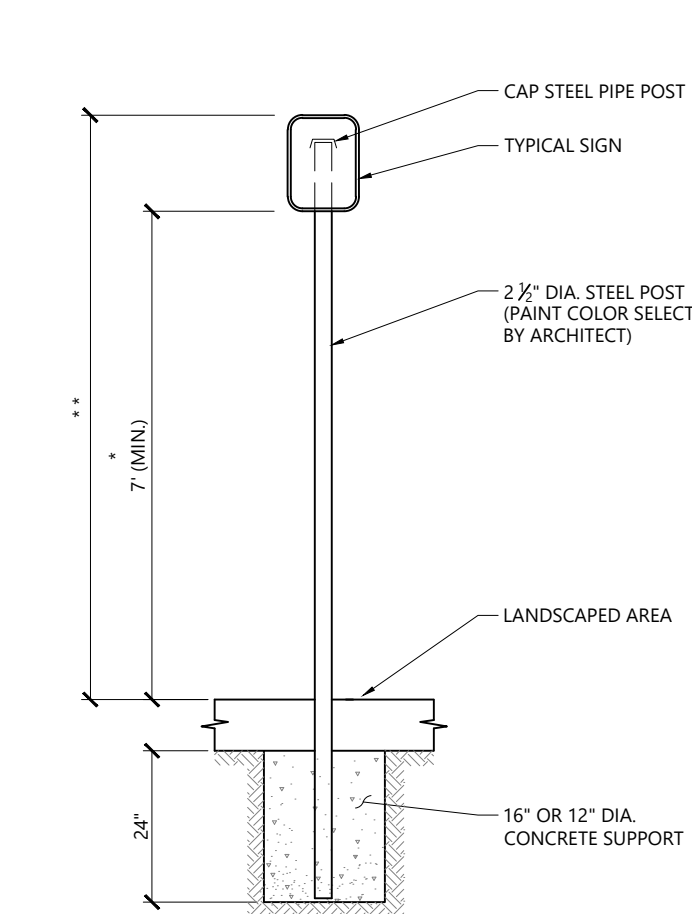
Utility Trench 1/16
N.T.S. Source: VHB REV LD_300



NOTES

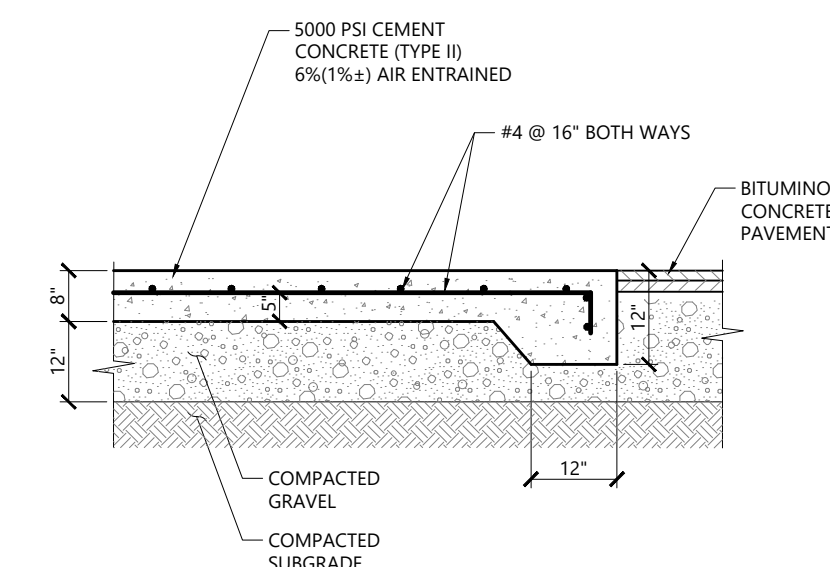
1. ALL DIMENSIONS TO CENTER OF 4\"/>
2. ALL SLOPES THROUGHOUT THE ACCESSIBLE PARKING AND AISLE AREAS SHALL NOT EXCEED 1.5%.

Accessible Parking Space 12/19
N.T.S. Source: VHB REV LD_552A



- * THIS DIMENSION SHALL BE A MINIMUM OF 5' FOR ACCESSIBLE SIGNAGE.
- ** THIS DIMENSION SHALL BE A MAXIMUM OF 8' FOR ACCESSIBLE SIGNAGE.

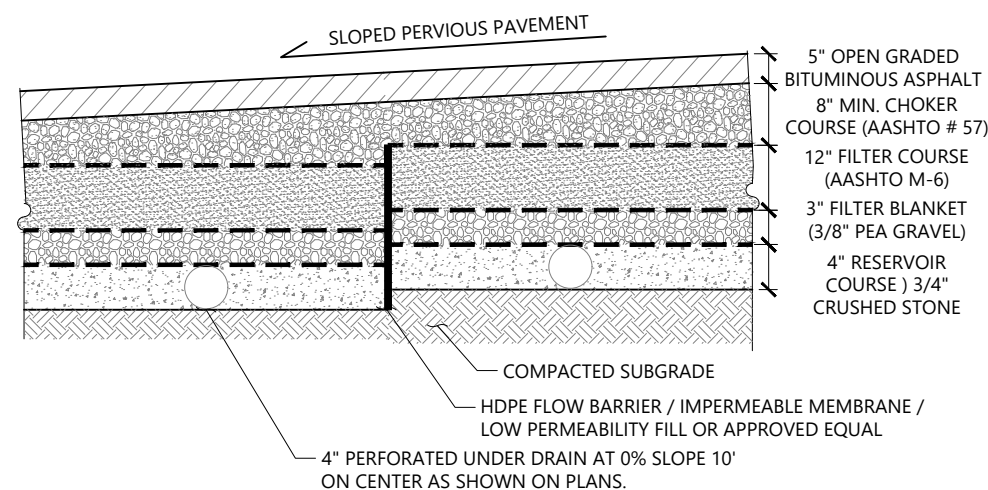
Sign Post - Type 'A' 1/16
N.T.S. Source: VHB REV LD_701



NOTES

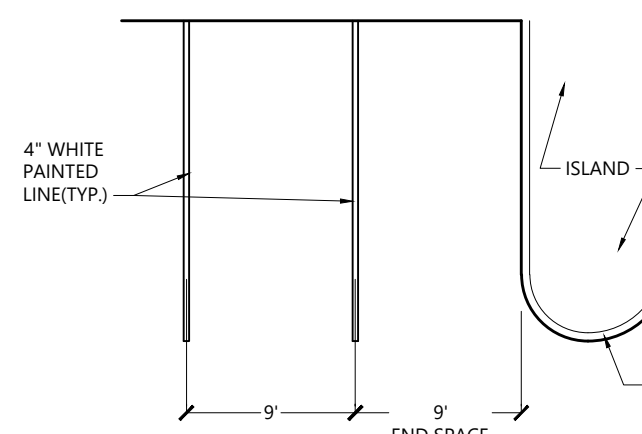
1. SIZE OF PAD TO BE AS INDICATED ON PLANS.
2. CONSTRUCTION JOINTS SHALL BE SPACED NO MORE THAN 30 FEET ON CENTER AND SHALL BE EQUALLY SPACED OVER THE LENGTH AND WIDTH OF THE PAD.
3. MECHANICAL EQUIPMENT PAD IS SHOWN FOR SUBSURFACE PREPARATION ONLY AND IS NOT APPROVED FOR CONSTRUCTION. SEE PLANS PREPARED BY THE STRUCTURAL ENGINEER FOR THICKNESS AND REINFORCING OF MECHANICAL EQUIPMENT PADS TO BE DESIGNED FOLLOWING FINAL SELECTION OF MECHANICAL EQUIPMENT.

Mechanical Equipment Concrete Pad 1/16
N.T.S. Source: VHB REV LD_711

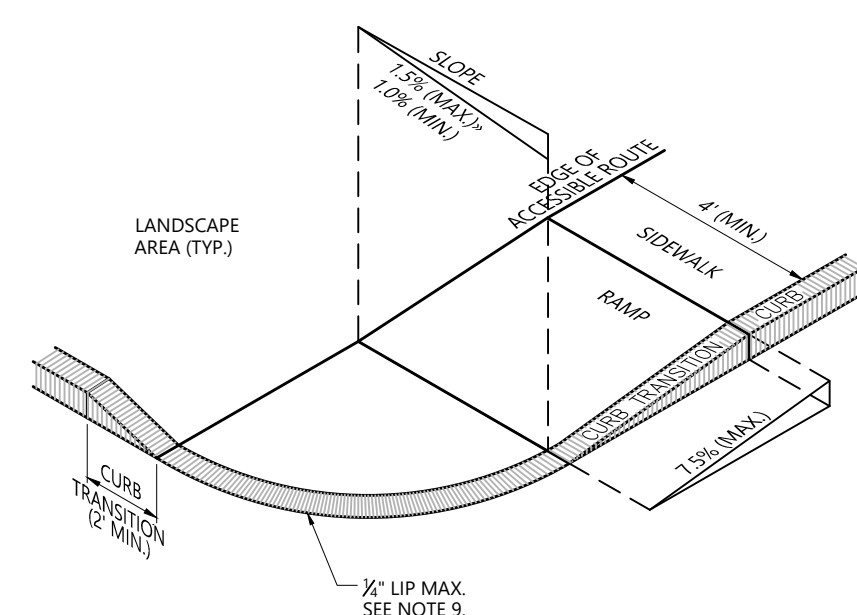


- NOTES**
- POROUS PAVEMENT SECTIONS SHALL BE CONSTRUCTED IN ACCORDANCE WITH THE UNIVERSITY OF NEW HAMPSHIRE STORMWATER CENTER DESIGN SPECIFICATIONS FOR POROUS ASPHALT PAVEMENT AND INFILTRATION BEDS* DATED OCTOBER 2009.

Pervious / Porous Pavement Section 1/16
N.T.S. Source: VHB REV LD_430



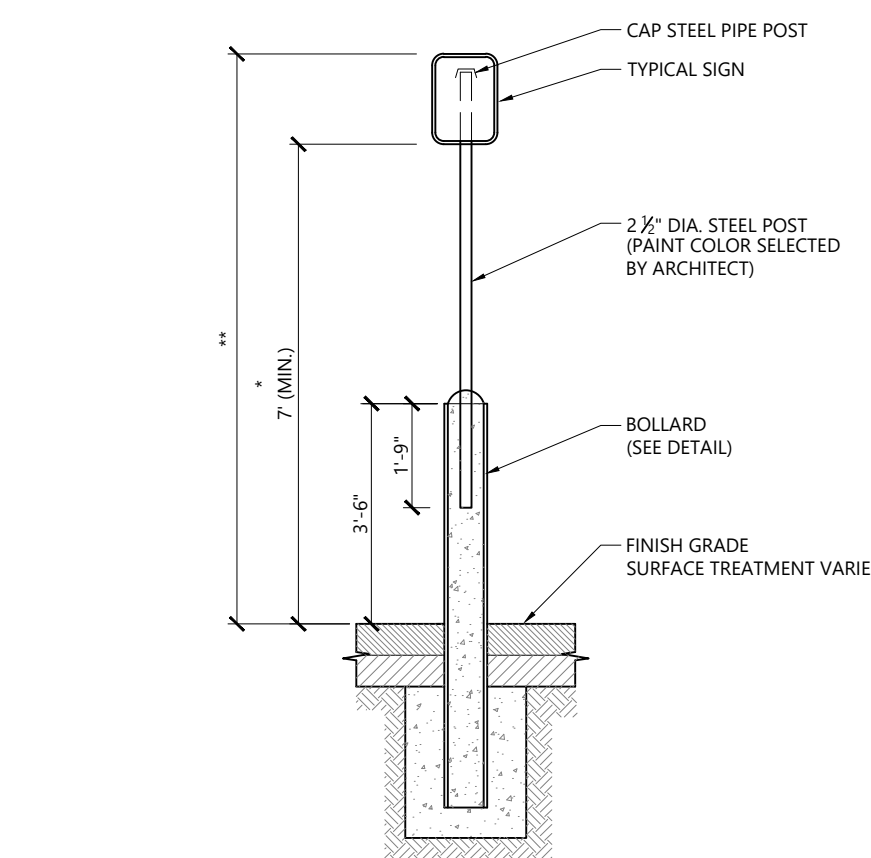
Striped Pavement Marking 1/16
N.T.S. Source: VHB REV LD_550



NOTES

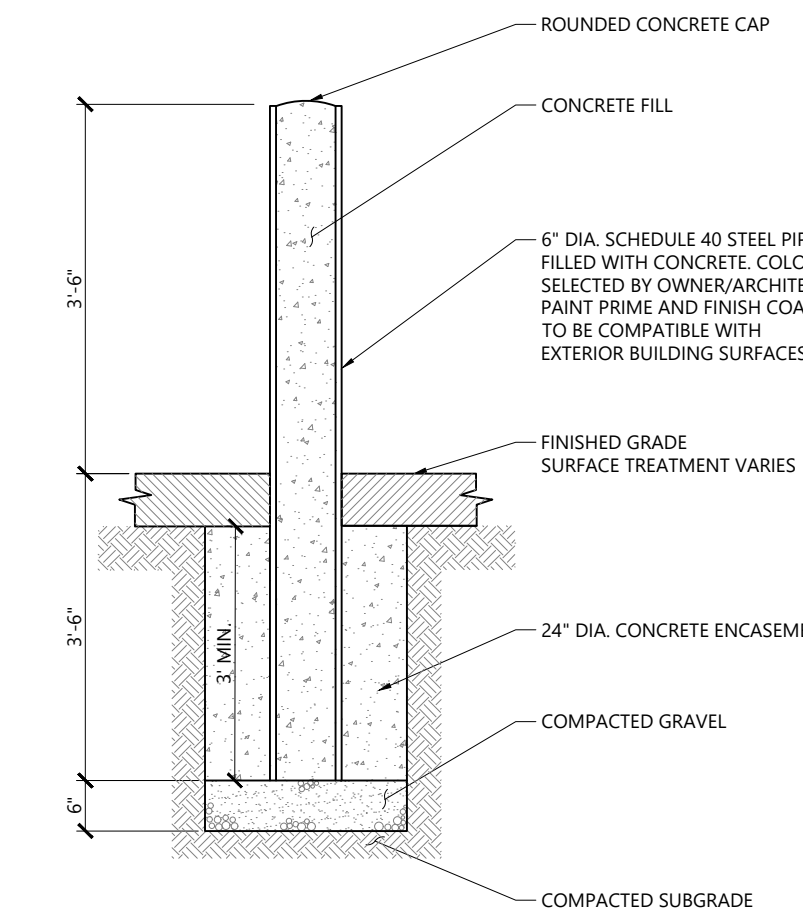
1. THE MAXIMUM ALLOWABLE SIDEWALK AND CURB RAMP CROSS SLOPES SHALL BE 1.5 (1% MIN).
2. THE MAXIMUM ALLOWABLE SLOPE OF ACCESSIBLE ROUTE EXCLUDING CURB RAMPS SHALL BE 5%.
3. THE MAXIMUM ALLOWABLE SLOPE OF ACCESSIBLE ROUTE AT CURB RAMPS SHALL BE 7.5%.
4. A MINIMUM OF 3 FEET CLEAR SHALL BE MAINTAINED AT ANY PERMANENT OBSTACLE IN ACCESSIBLE ROUTE (I.E. HYDRANTS, UTILITY POLES, TREE WELLS, SIGNS, ETC.).
5. CURB TREATMENT VARIES. SEE PLANS FOR CURB TYPE.
6. RAMP, CURB AND ADJACENT PAVEMENTS SHALL BE GRADED TO PREVENT PONDING.
7. SEE TYPICAL SIDEWALK SECTION FOR RAMP CONSTRUCTION.
8. WHERE ACCESSIBLE ROUTES ARE LESS THAN 5' IN WIDTH (EXCLUDING CURBING) A 5' x 5' PASSING AREA SHALL BE PROVIDED AT INTERVALS NOT TO EXCEED 200 FEET.
9. ELIMINATE CURBING AT RAMP WHERE IT ABUTS ROADWAY, EXCEPT WHERE VERTICAL CURBING IS INDICATED ON THE DRAWINGS TO BE INSTALLED AND SET FLUSH.

Accessible Curb Ramp (ACR) - Type 'B' 1/16
N.T.S. Source: VHB REV LD_501

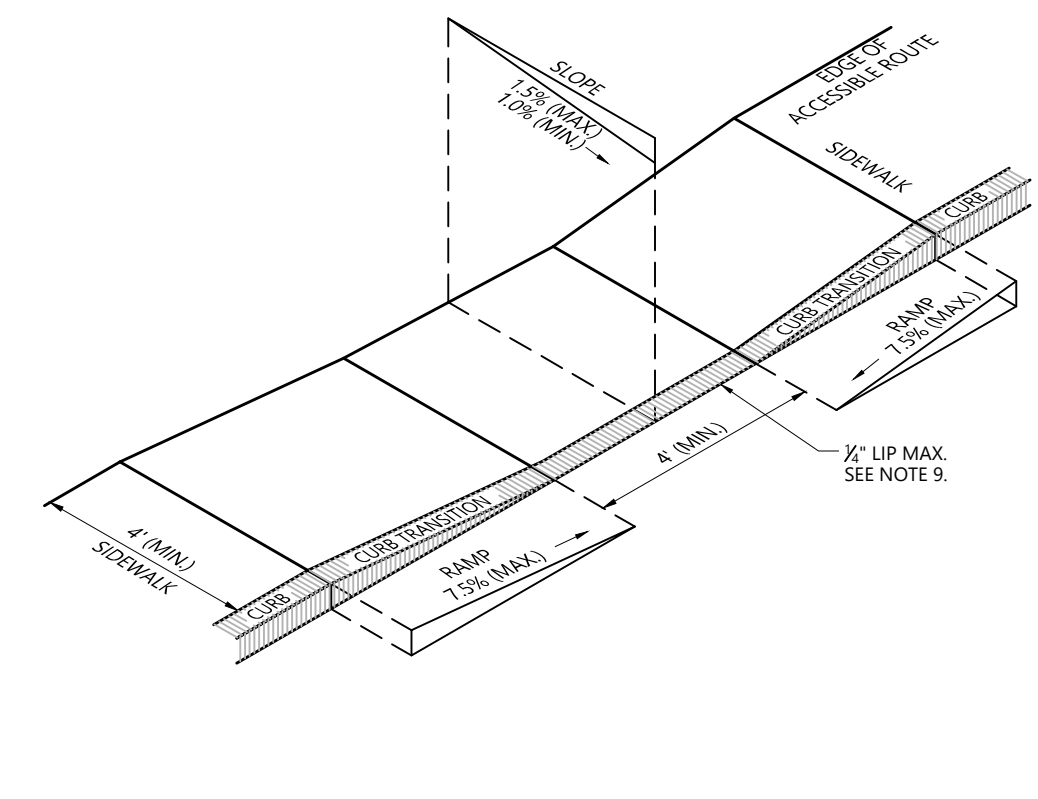


- * THIS DIMENSION SHALL BE A MINIMUM OF 5' FOR ACCESSIBLE SIGNAGE.
- ** THIS DIMENSION SHALL BE A MAXIMUM OF 8' FOR ACCESSIBLE SIGNAGE.

Bollard Mounted Sign 1/16
N.T.S. Source: VHB REV LD_703



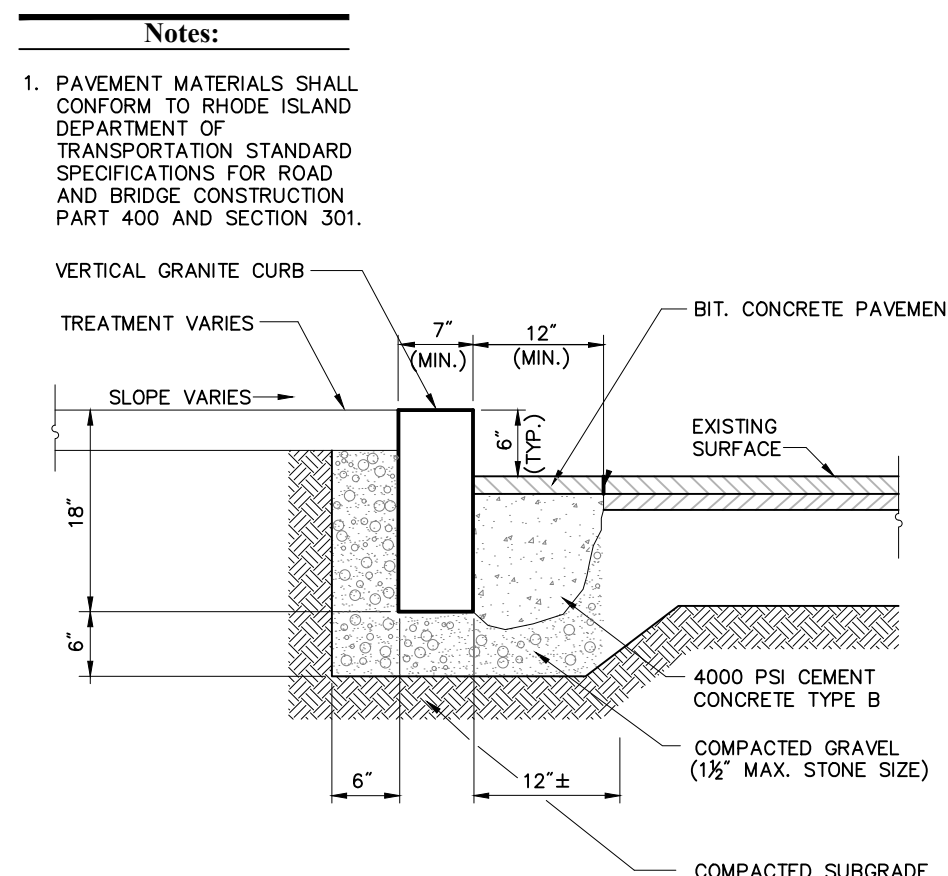
Bollard 9/17
N.T.S. Source: VHB REV LD_700



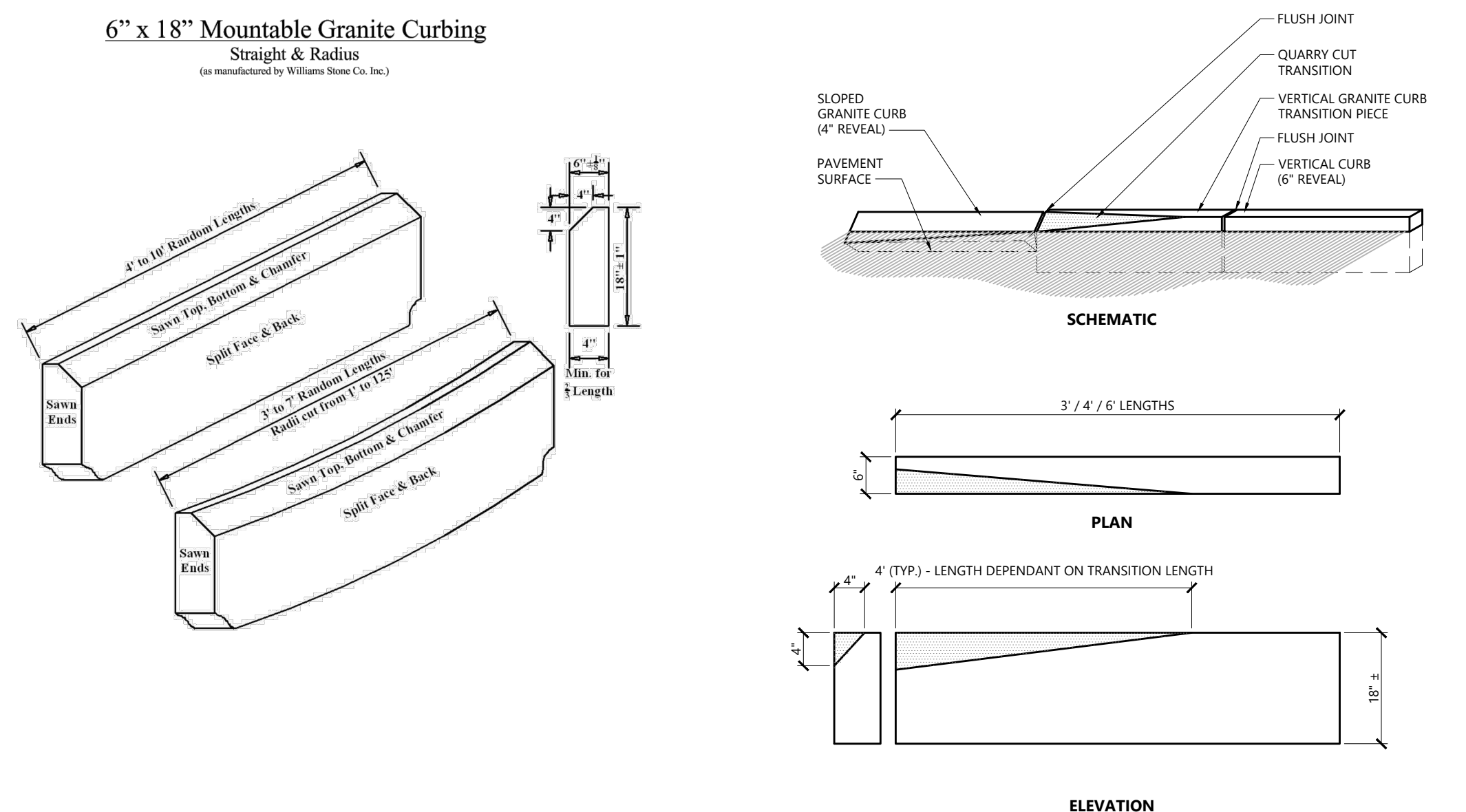
NOTES

1. THE MAXIMUM ALLOWABLE SIDEWALK AND CURB RAMP CROSS SLOPES SHALL BE 1.5 (1% MIN).
2. THE MAXIMUM ALLOWABLE SLOPE OF ACCESSIBLE ROUTE EXCLUDING CURB RAMPS SHALL BE 5%.
3. THE MAXIMUM ALLOWABLE SLOPE OF ACCESSIBLE ROUTE AT CURB RAMPS SHALL BE 7.5%.
4. A MINIMUM OF 3 FEET CLEAR SHALL BE MAINTAINED AT ANY PERMANENT OBSTACLE IN ACCESSIBLE ROUTE (I.E. HYDRANTS, UTILITY POLES, TREE WELLS, SIGNS, ETC.).
5. CURB TREATMENT VARIES. SEE PLANS FOR CURB TYPE.
6. RAMP, CURB, AND ADJACENT PAVEMENTS SHALL BE GRADED TO PREVENT PONDING.
7. SEE TYPICAL SIDEWALK SECTION FOR RAMP CONSTRUCTION.
8. WHERE ACCESSIBLE ROUTES ARE LESS THAN 5' IN WIDTH (EXCLUDING CURBING) A 5' x 5' PASSING AREA SHALL BE PROVIDED AT INTERVALS NOT TO EXCEED 200 FEET.
9. ELIMINATE CURBING AT RAMP (OTHER THAN VERTICAL CURBING, WHICH SHALL BE SET FLUSH) WHERE IT ABUTS ROADWAY.

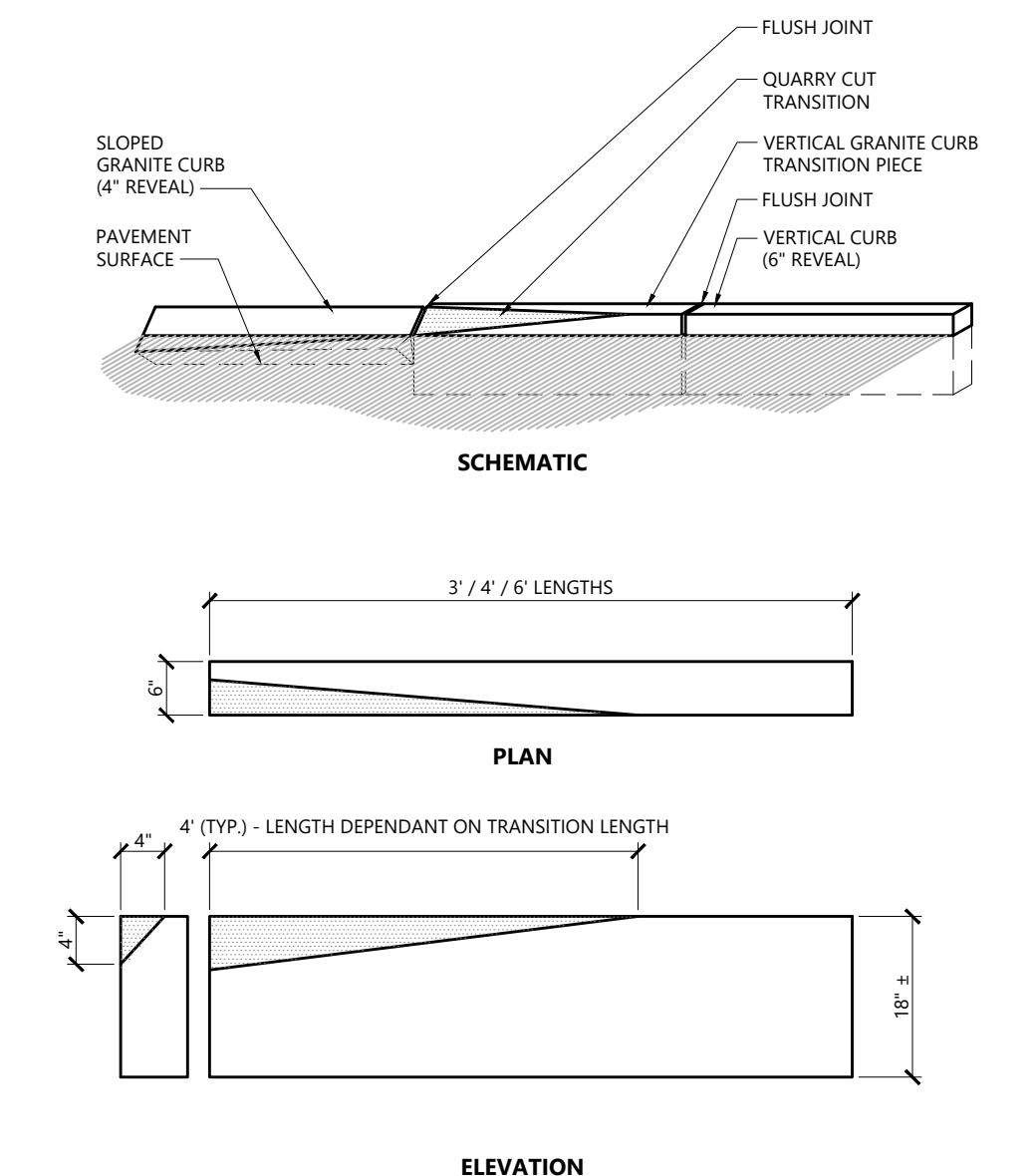
Accessible Curb Ramp (ACR) Type 'A' 1/16
N.T.S. Source: VHB REV LD_500



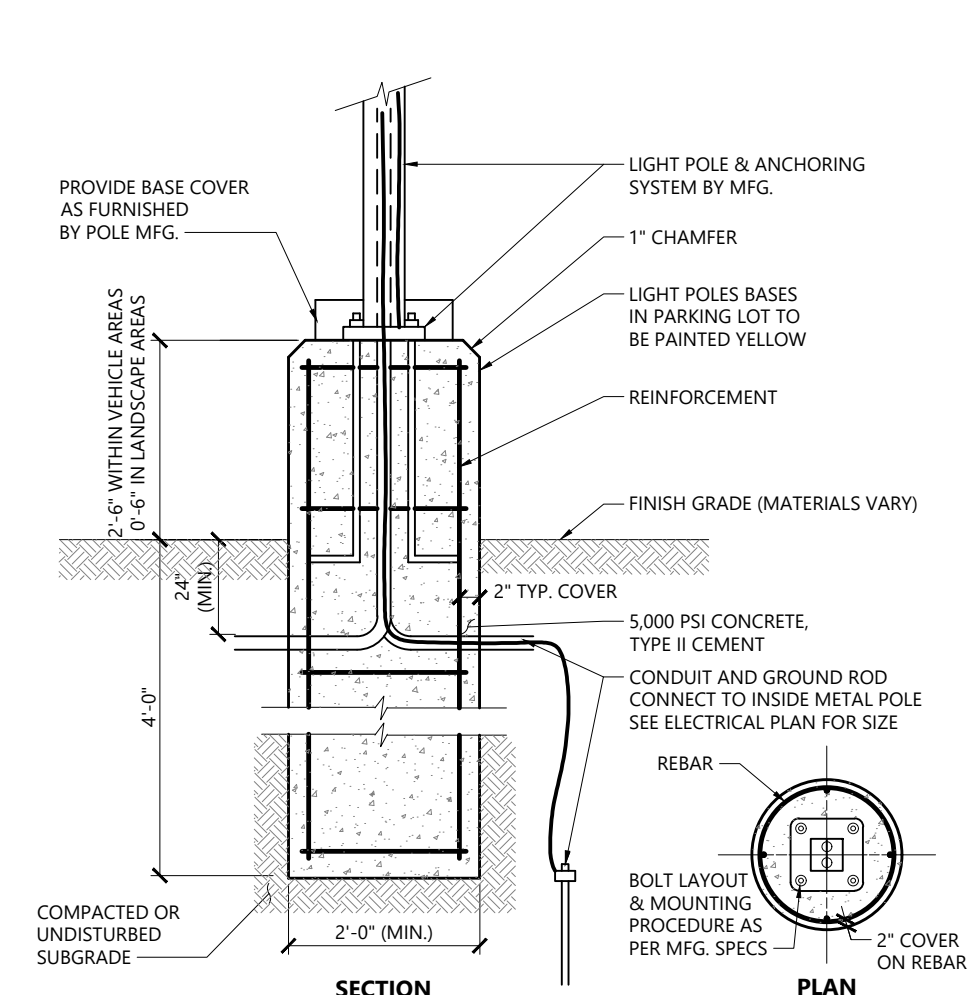
Vertical Granite Curb (VGC) 12/11
N.T.S. Source: VHB REV LD_403



Mountable Granite Curb (MGC) 1/16
N.T.S. Source: VHB REV LD_415



Vertical Granite Curb (VGC to FGC/MGC) Transition 1/16
N.T.S. Source: VHB REV LD_415



NOTES

DETAIL PROVIDED FOR GENERAL INFORMATION ONLY. CONTRACTOR TO PROVIDE STAMPED FINAL DESIGN OF LIGHT POLE FOUNDATION BASED ON RECOMMENDATIONS FROM THE GEOTECHNICAL ENGINEER.

Light Pole Foundation Detail (Up to 15' Pole) 12/19
N.T.S. Source: VHB REV LD_310A

Arden-Diman
Dormitory Renovation
St. George's School
372 Purgatory Road
Middletown, Rhode Island 02842

VMA

ARCHITECT
Voith & Mactavish Architects LLP
2401 Walnut Street, 6th Floor
Philadelphia, PA 19103
phone 215-545-4544
voithandmactavish.com

STRUCTURAL ENGINEER
Keast and Hood
1635 Market Street, Suite 1705
Philadelphia, PA 19103
phone 215-625-0099

M.E.P. AND FIRE PROTECTION ENGINEER
Kohler Ronan
93 Lake Ave.
Danbury, CT 06810
phone 203-778-1017

CIVIL ENGINEER
Vanasse Hangen Brustlin
1 Cedar Street, Suite 400
PROVIDENCE, RI
phone 401-272-8100

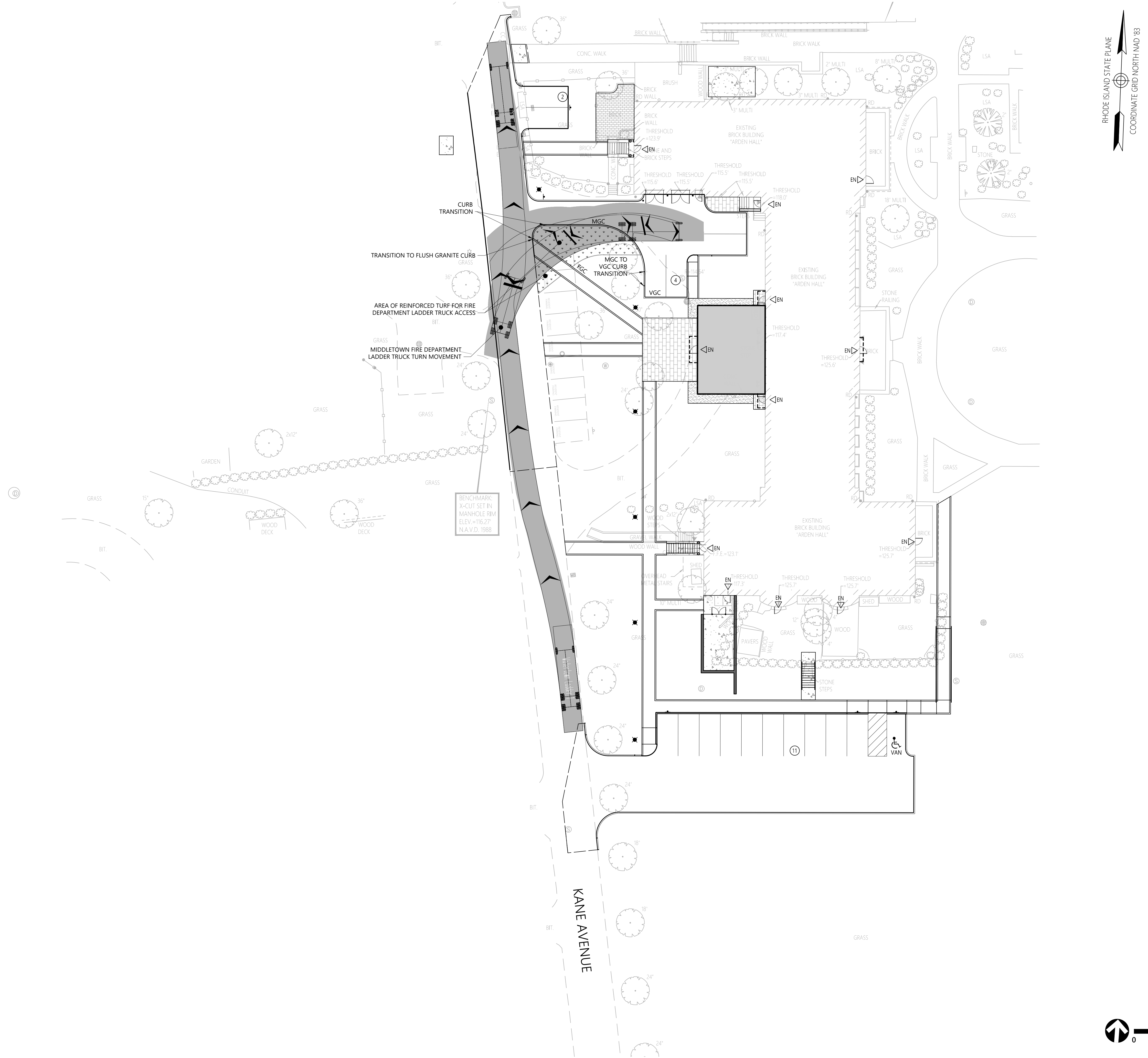


PERMIT SET
NOT FOR CONSTRUCTION
Revision REV1 - TRC COMMENTS
Date 2023-03-30
Title SITE DETAILS 1

Scale 1" = 20'
Drawn By DDH

C5.00

Contractor to verify all dimensions in field and inform Architect of any discrepancies before starting work.



Arden-Diman
Dormitory Renovation
St. George's School
372 Purgatory Road
Middletown, Rhode Island 02842



ARCHITECT
Voith & Mactavish Architects LLP
2401 Walnut Street, 6th Floor
Philadelphia, PA 19103
phone 215-545-4544
voithandmactavish.com

STRUCTURAL ENGINEER
Keast and Hood
1635 Market Street, Suite 1705
Philadelphia, PA 19103
phone 215-625-0099

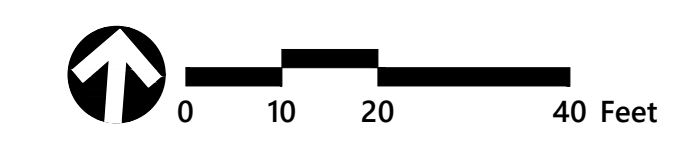
M.E.P. AND FIRE PROTECTION ENGINEER
Kohler Ronan
93 Lake Ave.
Danbury, CT 06810
phone 203-778-1017

CIVIL ENGINEER
Vanasse Hangen Brustlin
1 Cedar Street, Suite 400
PROVIDENCE, RI
phone 401-272-8100



PERMIT SET
NOT FOR CONSTRUCTION

Revision	REV1 - TRC COMMENTS
Date	2023-03-30
Title	FIRE TRUCK TURN PLAN
Scale	1" = 20'
Drawn By	DDH



Turn-1

Contractor to verify all dimensions in field and inform Architect of any discrepancies before starting work.