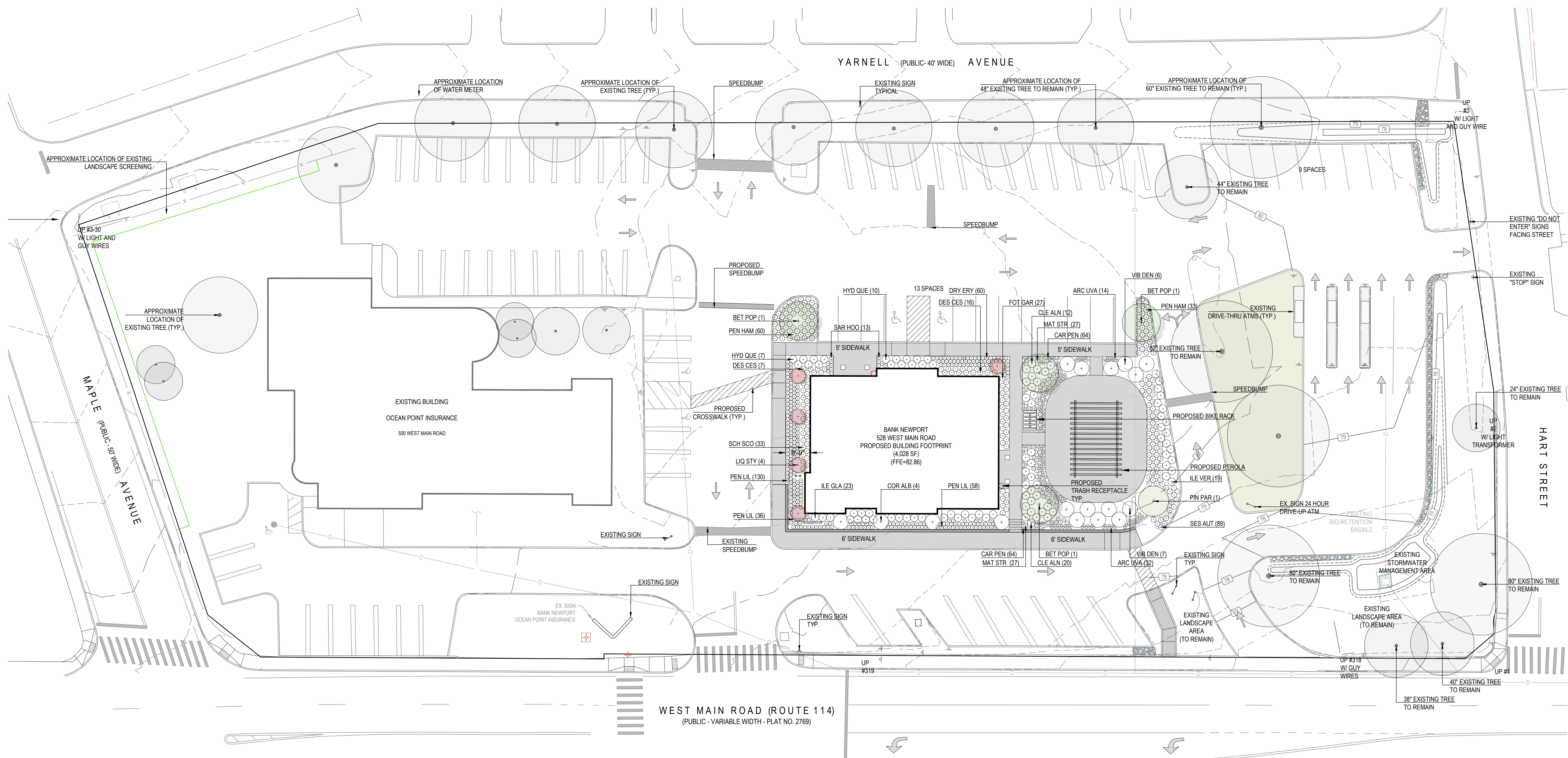


BANK NEWPORT
528 WEST MAIN ROAD
MIDDLETOWN, RI



PLANTING LEGEND

SYMBOL	BOTANICAL NAME	COMMON NAME	QTY	SIZE	SPACING
TREES					
LIQ STY	LIQUIDAMBAR STYRACIFLUA 'SLENDER SILHOUETTE'	SLENDER SILHOUETTE SWEETGUM	5	2.5' MIN. CAL.	
BET POP	BETULA POPULIFOLIA 'WHITESPIRE' - CLUMP	GRAY BIRCH	4	4" MIN. CAL.	
EVERGREENS					
PIN PAR	PINUS PARVIFLORA 'GLAUCA'	JAPANESE WHITE PINE	1	10'12' B&B	
SHRUBS					
CLE ALN	CLETHRA ALNIFOLIA 'SIXTEEN CANDLES'	SIXTEEN CANDLES SUMMERSWEET	32	3 GAL.	
COR ALB	CORNUS ALBA 'ELEGANTISSIMA'	VARIEGATED RED TWIG DOGWOOD	4	7 GAL.	
ILE GLA	ILEX GLABRA 'GEM BOX'	WINTERBERRY	23	5 GAL.	
ILE VER	ILEX VERTICILLATA 'LITTLE GOBLIN'	WINTERBERRY	19	5 GAL.	
FOT GAR	FOTHERGILLA GARDENII	DWARF FOTHERGILLA	27	3 GAL.	
HYD QUE	HYDRANGEA QUERCIFOLIA 'SIKE'S DWARF'	DWARF OAKLEAF HYDRANGEA	17	5 GAL.	
VIB DEN	VIBURNUM DENTATUM 'CHICAGO LUSTRE'	CHICAGO LUSTRE VIBURNUM	13	7 GAL.	
FERNS AND GROUNDCOVER					
ARC UVA	ARCTOSTAPHYLOS UVA-URSI 'MASSACHUSETTS'	COMMON BEARBERRY	46	1 GAL.	12-18"
DRY ERY	DRYOPTERIS ERYTHROSORA	AUTUMN FERN	60	1 GAL.	12-18"
MAT STR	MATTEUCCIA STRUTHIOPERIS	EUROPEAN OSTRICH FERN	54	1 GAL.	24"-36"
SAR HOO	SARCOCOCCA HOOKERIANA VAR. HUMILIS	SWEETBOX	13	1 GAL.	12"
GRASSES					
CAR PEN	CAREX PENNSYLVANICA	PENNSYLVANIA SEDGE	132	1 GAL.	12-18"
DES CES	DESCHAMPSIA CESPITOSA	TUFTED HAIR GRASS	23	1 GAL.	18"
PEN HAM	PENNISETUM ALOPECUROIDES 'HAMELN'	HAMELN FOUNTAIN GRASS	93	1 GAL.	24"
PEN LIT	PENNISETUM ALOPECUROIDES 'LITTLE BUNNY'	LITTLE BUNNY FOUNTAIN GRASS	224	1 GAL.	18"
SES AUT	SESLERIA AUTUNNALIS	AUTUMN MOOR GRASS	89	1 GAL.	18"
SCH SCO	SCHIZACHYRIUM SCOPARIUM 'CAROUSEL' PP20948	CAROUSEL LITTLE BLUESTEM	33	1 GAL.	24"
HYDRO SEED					
	LOW MOW FESCUE - TO BE HYDRO SEEDED		2960	SF	

LANDSCAPE REQUIREMENTS (TOWN OF MIDDLETOWN)

EXISTING VEGETATION
TREES AND VEGETATION ARE USED TO SATISFY LANDSCAPING REQUIREMENTS (WHENEVER POSSIBLE)
TREES HAVING GREATER THAN 18" DBH ARE PRESERVED (WHENEVER POSSIBLE)
TREES HAVING GREATER THAN 18" DBH THAT CANNOT BE PRESERVED ARE REPLACED WITH TWO TREES OF AT LEAST 4" DBH

PLANTED LANDSCAPING OCCUPIES A MINIMUM OF 25% OF THE PROJECT AREA.
TOTAL PROJECT AREA = 108,464 SF
REQUIRED LANDSCAPE AREA = 27,116 SF (25% OF PROJECT AREA)
EXISTING LANDSCAPED AREA = 32,465 SF
PROPOSED LANDSCAPE AREA = 4,208 SF (4.34% OF PROJECT AREA)

SCREENING
SCREENING ELEMENT SUCH AS PLANTINGS, STONE WALLS, BERMS, AND/OR FENCES (OR A COMBINATION)
PROVIDED ALONG ALL PROPERTY LINES

BUFFERS
A LANDSCAPED BUFFER AT LEAST 10' IS PROVIDED ALONG ALL PROPERTY LINES (MAY BE REDUCED IF STONE WALL USED AS SCREENING ELEMENT)
FOR ALL USES, A LANDSCAPED BUFFER AT LEAST 20' THAT INCLUDES SCREENING AT LEAST 6' HIGH MEASURED FROM FINISHED GRADE AT TIME OF INSTALLATION IS PROVIDED.
A LANDSCAPED BUFFER AT LEAST 10' WIDE, WHICH IS DEFINED BY CURBING AND MAY INCLUDE SIDEWALKS BUT MUST INCLUDE A MINIMUM 5' PLANTING STRIP IS PROVIDED BETWEEN BUILDINGS AND PARKING LOTS/DRIVEWAYS

PLANTINGS
PLANTINGS ARE NONINVASIVE SPECIES, AND NATIVE TO AQUIDNECK ISLAND IF POSSIBLE

TREES
DECIDUOUS STREET TREES - EXISTING STREET TREES TO REMAIN
PLANTED ALONG STREET SIDE PROPERTY BOUNDARY, PRIVATE STREETS, AND INTERNAL DRIVEWAYS
PLANTED IN STRIPS OR TREE WELLS LOCATED BETWEEN THE SIDEWALK AND CURB.
SPACED NO FURTHER THEN 30' ON CENTER
A MINIMUM OF 4" DBH AT TIME OF PLANTING

PARKING LOT TREES - 2 TREES REQUIRED, 4 TREES PROPOSED
MINIMUM OF ONE TREE PROVIDED FOR EVERY 5 PARKING SPACES
TREES AT LEAST 4" CALIBER DBH AND 7' TALL AT TIME OF PLANTING
SURROUNDED BY AT LEAST 25 SF OF PERMEABLE UNPAVED AREA

SCENIC VIEWS
SCENIC VIEWS AND HISTORICALLY SIGNIFICANT LANDSCAPE FEATURES PRESERVED TO THE MAXIMUM EXTENT REASONABLY POSSIBLE
CONSISTENT WITH TOWN CODE CHAPTER 96: TREE PRESERVATION AND PROTECTION
CONSISTENT WITH TOWN CODE CHAPTER 97: STONE WALLS

MAINTENANCE
FOR LARGER PROJECTS OR SIGNIFICANT LANDSCAPE FEATURES, A MAINTENANCE AGREEMENT AND/OR BOND MAY BE REQUIRED
LANDSCAPE MAINTENANCE PLANS ARE REQUIRED BY SECTION 523, AND PERFORMANCE AND MAINTENANCE GUARANTEES ARE REQUIRED UNDER ARTICLE 7.

PROJECT NUMBER: 23.055
DRAWN BY: MS
CHECKED BY: PR
SCALE: 1"=20'-0"
DATE: 02.10.2023

REVISIONS:

NO.	DESCRIPTION

PLANTING PLAN



L1.0