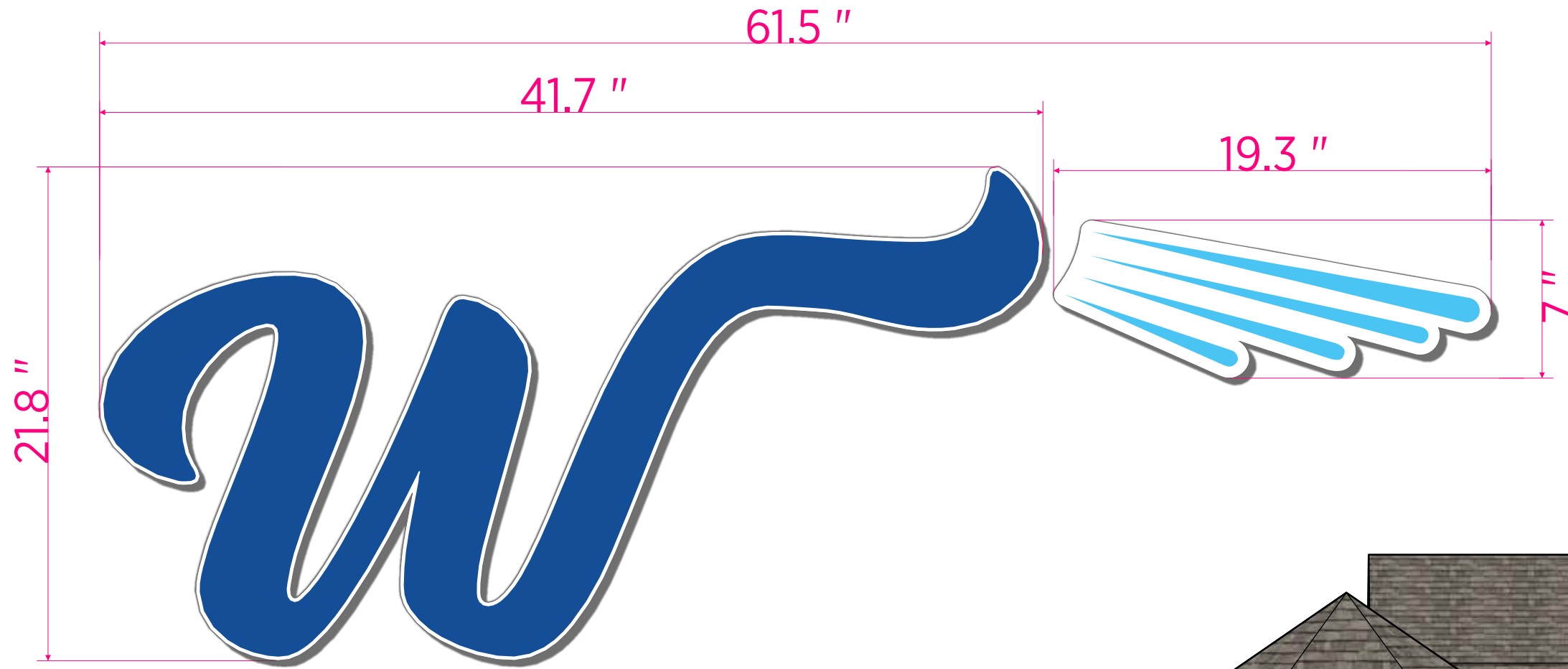


FACE-LIT CHANNEL LETTER SET

Loc. 1 • Parking Side

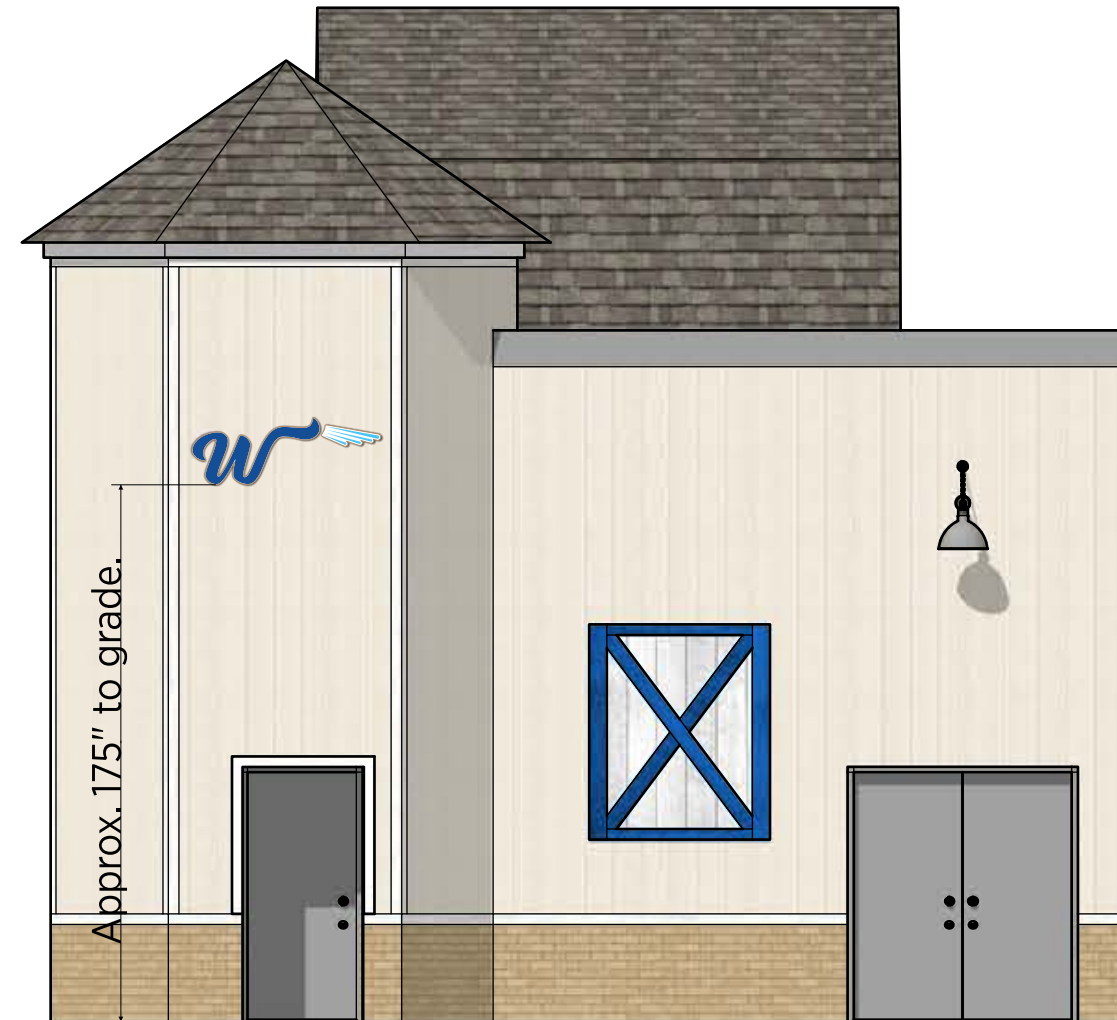
Qty: 1

A
3" deep channel letters. White returns and trim cap. Trans. and block out (around water drops) vinyl applied to White acrylic faces. Flush mount to building wall with appropriate hardware.



- PAINT COLORS**
- White
- VINYL COLORS**
- Blue (TBD)
 - Blue (TBD)

Sign Sq Ftg: 9.3



Customer/Job Location:
WASHVILLE
Middletown, RI

DWG. DATE: 2.9.2022

Rev.1:	Rev.4:
Rev.2:	Rev.5:
Rev.3:	Rev.6:

APPROVAL APPROVED APPROVED AS NOTED

Date _____ x _____

File Name: Washville_MiddletownRI_Sign Pkg_3725

Sales: TD Design: JP PMgr: EC

Drawing # **22-03725-1**

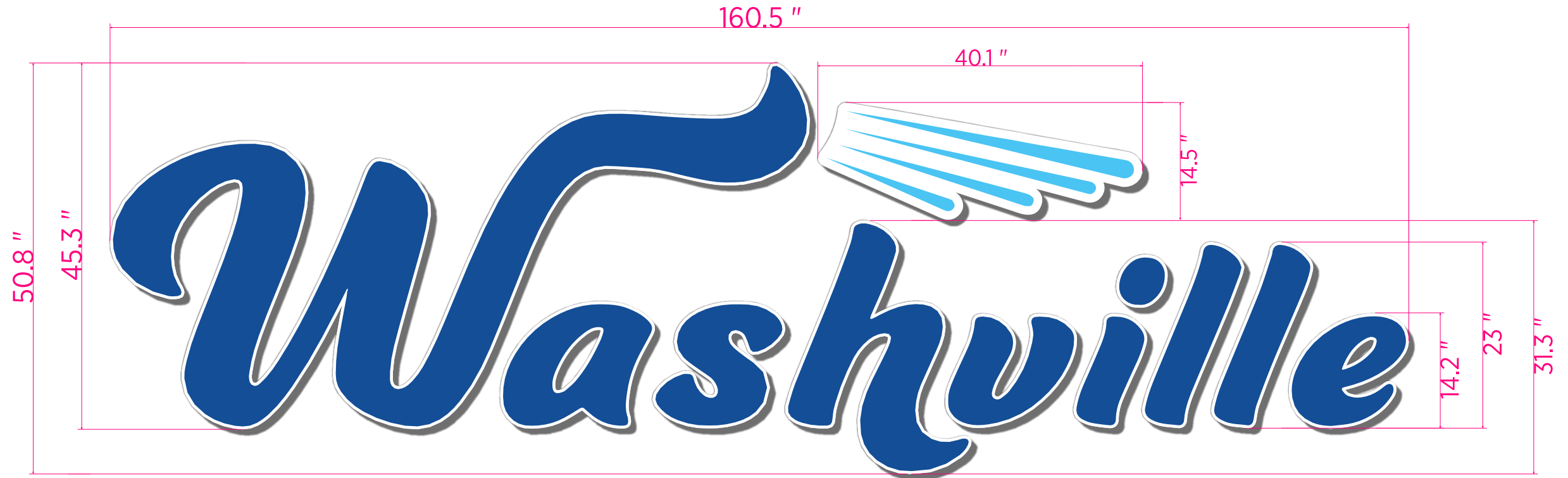


FACE-LIT CHANNEL LETTER SET

Loc. 3 • Exit Side

Qty: 1

A
3" deep channel letters. White returns and trim cap. Trans. and block out (around water drops) vinyl applied to White acrylic faces. Flush mount to building wall with appropriate hardware.



- PAINT COLORS**
- White
- VINYL COLORS**
- Blue (TBD)
 - Blue (TBD)

Sign Sq Ftg: 28.3



Customer/Job Location:
WASHVILLE
Middletown, RI

DWG. DATE: 2.9.2022

Rev.1:	Rev.4:
Rev.2:	Rev.5:
Rev.3:	Rev.6:

APPROVAL APPROVED APPROVED AS NOTED

Date _____ x _____

File Name: Washville_MiddletownRI_Sign Pkg_3725

Sales: TD Design: JP PMgr: EC
Drawing # **22-03725-3**


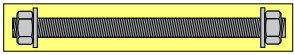




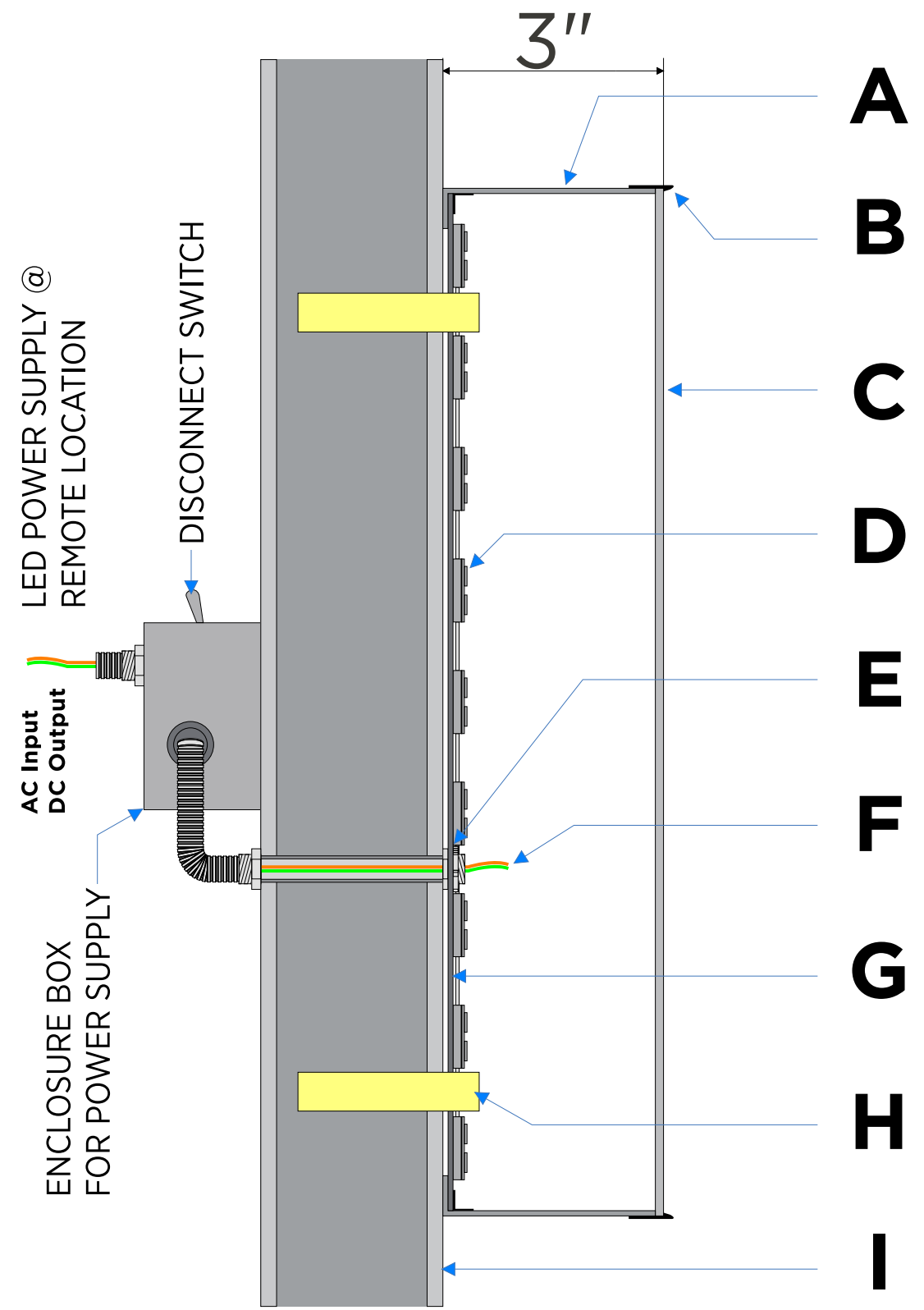
FACE LIT CHANNEL LETTERS

Flush Mount

- A** .040" thick aluminum returns.
- B** 1" plastic trim cap.
- C** .1875" thick White acrylic faces.
- D** LED modules.
- E** .375" dia. thru-hole, maximum one per letter. Sealed w/ silicone.
- F** 18AWG jumper wire.
- G** ACM backs.
- H** Hardware. See key for typicals.
- I** Wall. Type: TBD.
Final, primary hook-up by others.
15' whips, typical.

Typical Hardware Options Key:

-  Masonry Anchors
-  Thru Bolts
-  Studs
-  Lag Bolts



Customer/Job Location:
WASHVILLE
Middletown, RI

DWG. DATE: 2.9.2022

Rev.1:	Rev.4:
Rev.2:	Rev.5:
Rev.3:	Rev.6:

APPROVAL APPROVED APPROVED AS NOTED

Date _____ x _____

File Name: Washville_MiddletownRI_Sign Pkg_3725

Sales: TD Design: JP PMgr: EC

Drawing # **22-03725-4**

ACM PANELS

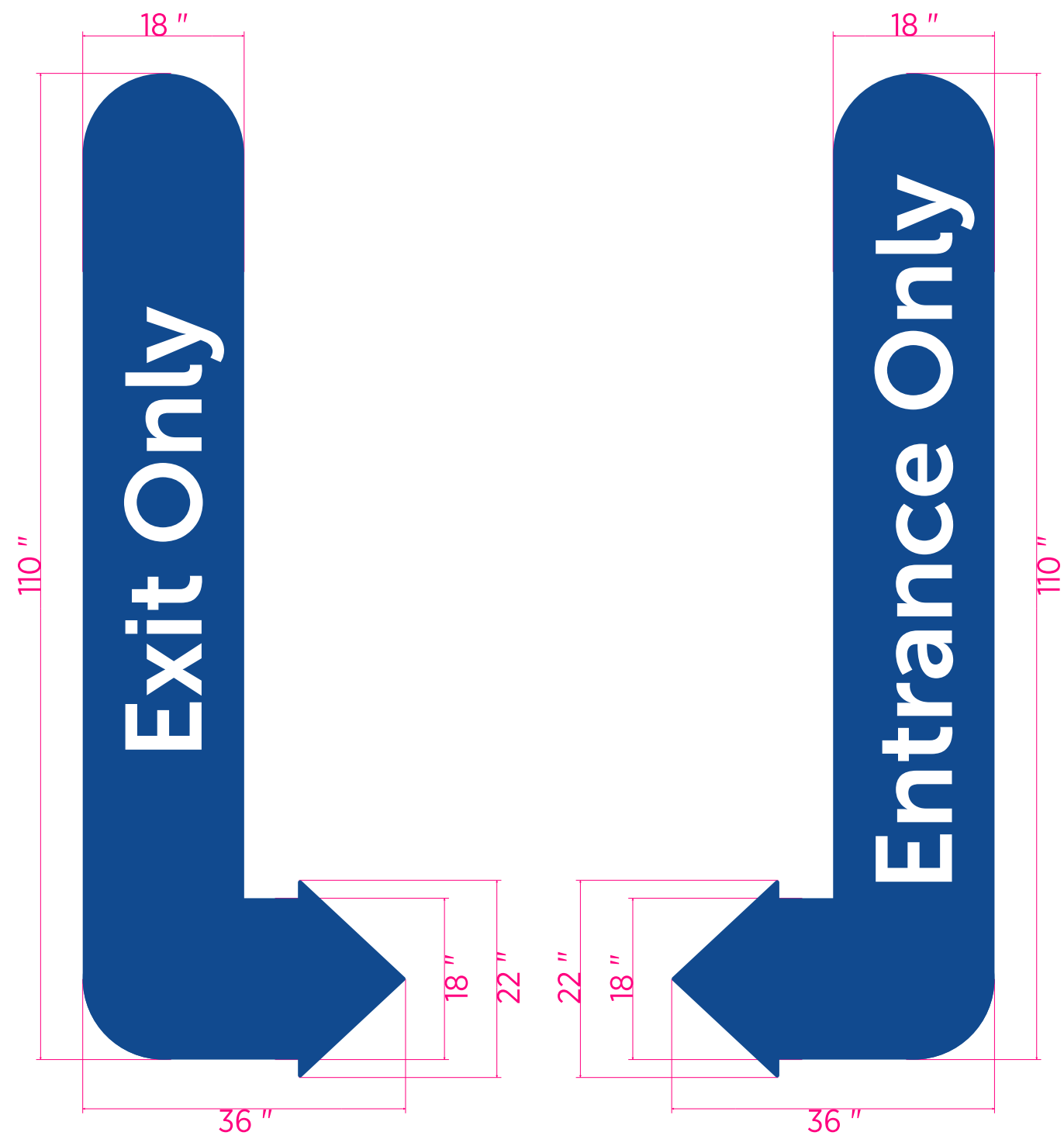
Locations 4 & 5

Qty: 2 (1 of Each)

A
3MM ACM panels painted Blue with White Reflective vinyl applied to face. Panels attach to building, through the face, with appropriate hardware. Heads painted Blue.

- PAINT COLORS**
- Blue (TBD)
- VINYL COLORS**
- White Reflective

Sign Sq Ftg: 27.5



Customer/Job Location:
WASHVILLE
Middletown, RI

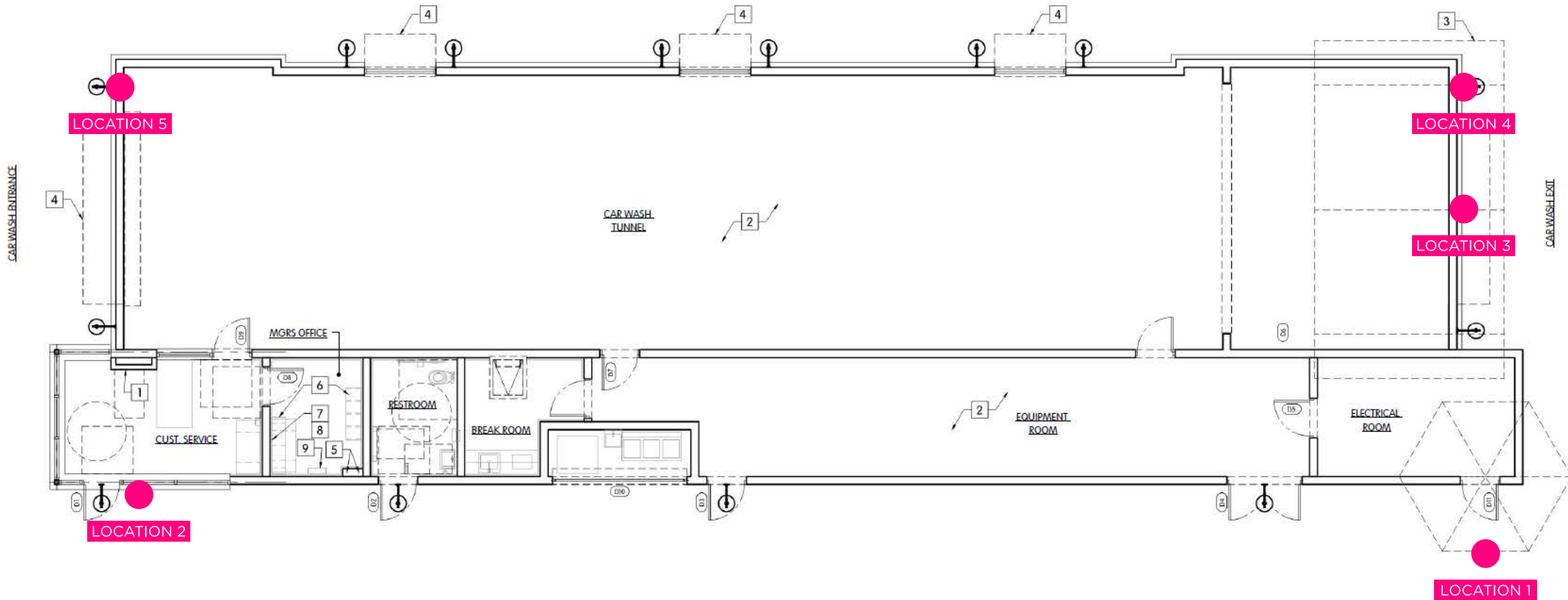
DWG. DATE: 2.9.2022
Rev.1: Rev.4:
Rev.2: Rev.5:
Rev.3: Rev.6:

APPROVAL APPROVED APPROVED AS NOTED
Date _____ x _____
File Name: Washville_MiddletownRI_Sign Pkg_3725

Sales: TD Design: JP PMgr: EC
Drawing # **22-03725-5**



LOCATION PLAN



Customer/Job Location:
WASHVILLE
 Middletown, RI

DWG. DATE: 2.9.2022

Rev.1:	Rev.4:
Rev.2:	Rev.5:
Rev.3:	Rev.6:

APPROVAL APPROVED APPROVED AS NOTED

Date _____ x _____

File Name: Washville_MiddletownRI_Sign Pkg_3725

Sales:	Design:	PMgr:
TD	JP	EC

Drawing # **22-03725-6**

