

Washville

Your Hometown Car Wash

931 W MAIN STREET | MIDDLETOWN, RI 02842
 PROPOSED DESIGN FOR A NEW CAR WASH FACILITY @ 110' WASH TUNNEL LENGTH

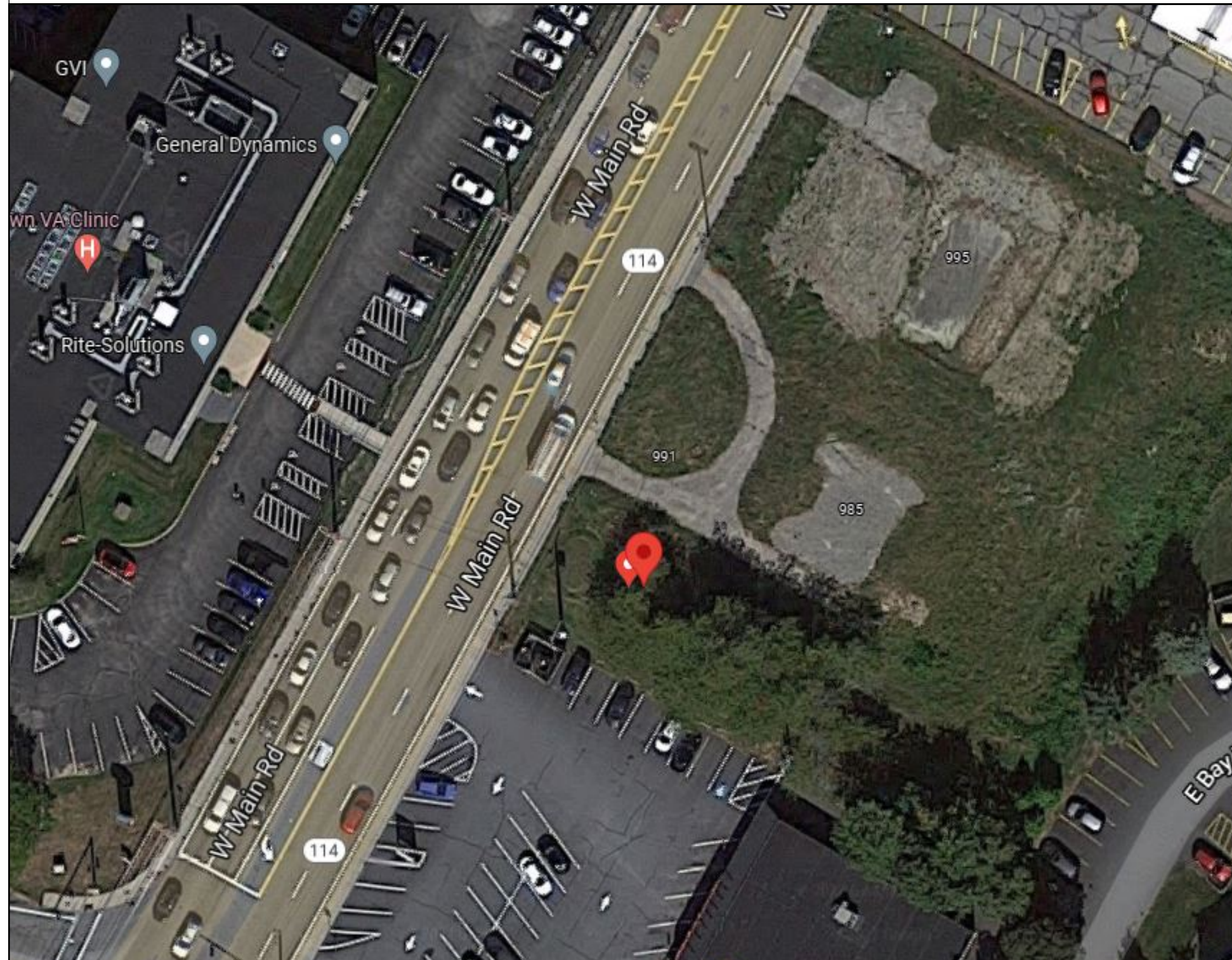
sevan
 DESIGN SOLUTIONS, P.C.

Corporate Office
 3025 Highland Parkway | Suite 850
 Downers Grove, IL 60515
 info@sevan.com | www.sevan.com

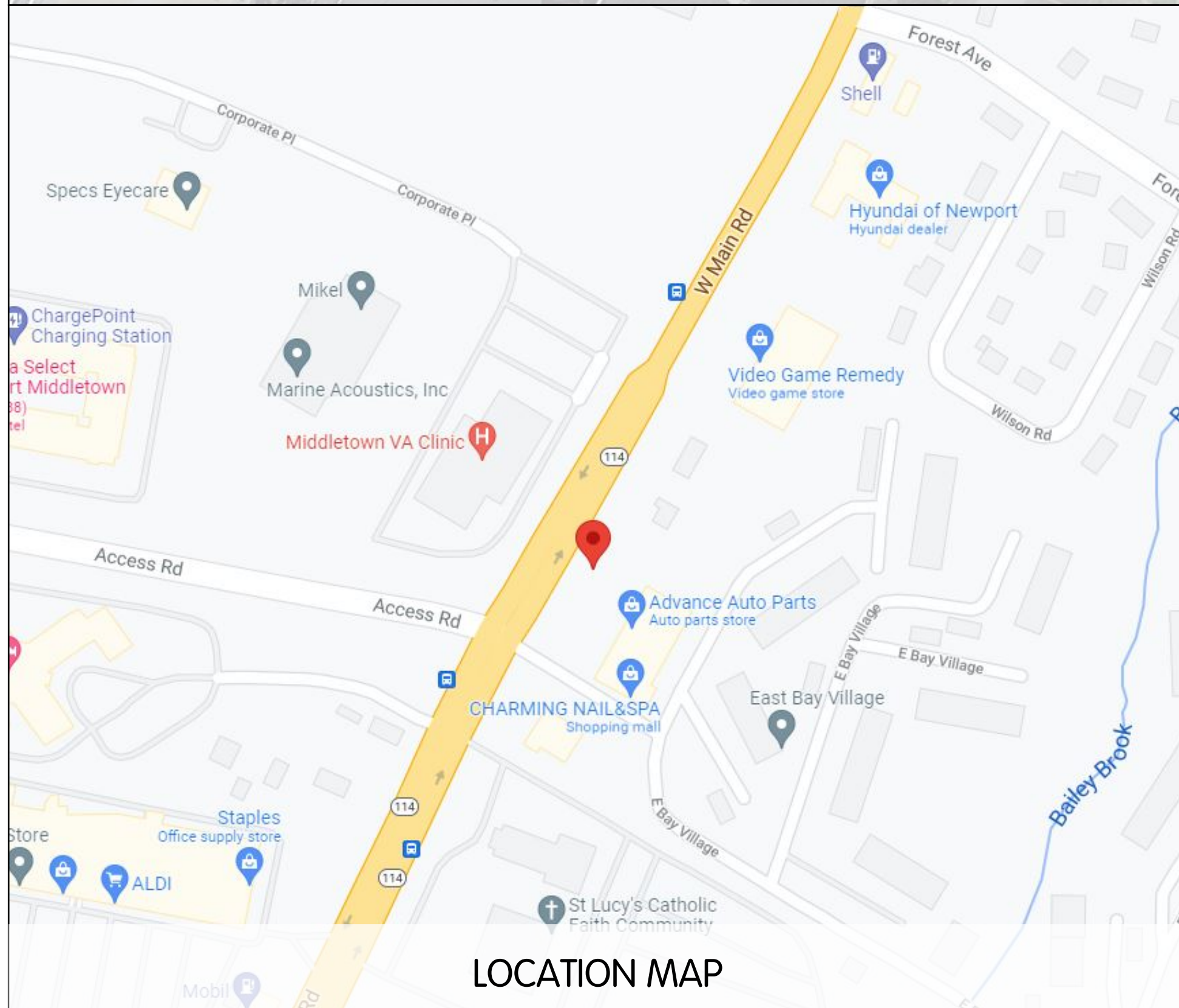
INTEGRITY | RESPECT | TEAMWORK
 EXCELLENCE | CHARITY



SEAL



AERIAL MAP



LOCATION MAP

DRAWING INDEX

G100	COVER SHEET
A100	FLOOR PLAN
A200	EXTERIOR ELEVATIONS
A201	EXTERIOR ELEVATIONS
A300	EXTERIOR RENDERINGS - DAY
A301	EXTERIOR RENDERINGS - NIGHT

REVISIONS
 DESCRIPTION
 MUNICIPALITY COMMENTS

NO	DESCRIPTION	MUNICIPALITY COMMENTS
1		

PROJECT INFORMATION

WASHVILLE CAR WASH
 931 W MAIN STREET | MIDDLETOWN, RI 02842

COVER SHEET

SHEET MANAGEMENT

PROJECT #: WAS04-078
 DATE ISSUED: 01/25/22
 DRAWN BY: RC
 REVIEWED BY: PK

SHEET NUMBER

G100



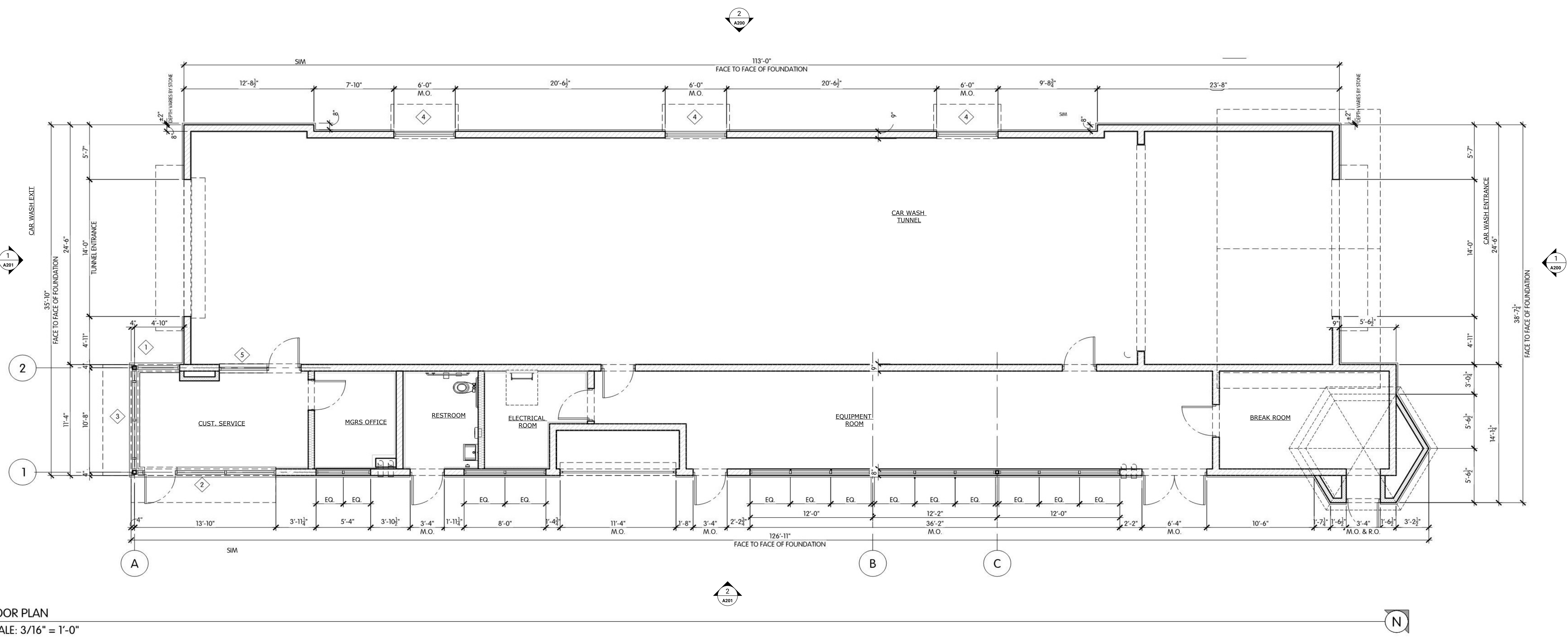
SEAL

NO	REVISIONS	DESCRIPTION	MUNICIPALITY COMMENTS
1			

PROJECT INFORMATION
WASHVILLE CAR WASH
931 W MAIN STREET | MIDDLETOWN, RI 02842

SHEET MANAGEMENT	
PROJECT #:	WAS04-078
DATE ISSUED:	01/25/22
DRAWN BY:	RC
REVIEWED BY:	PK

SHEET NUMBER
A100

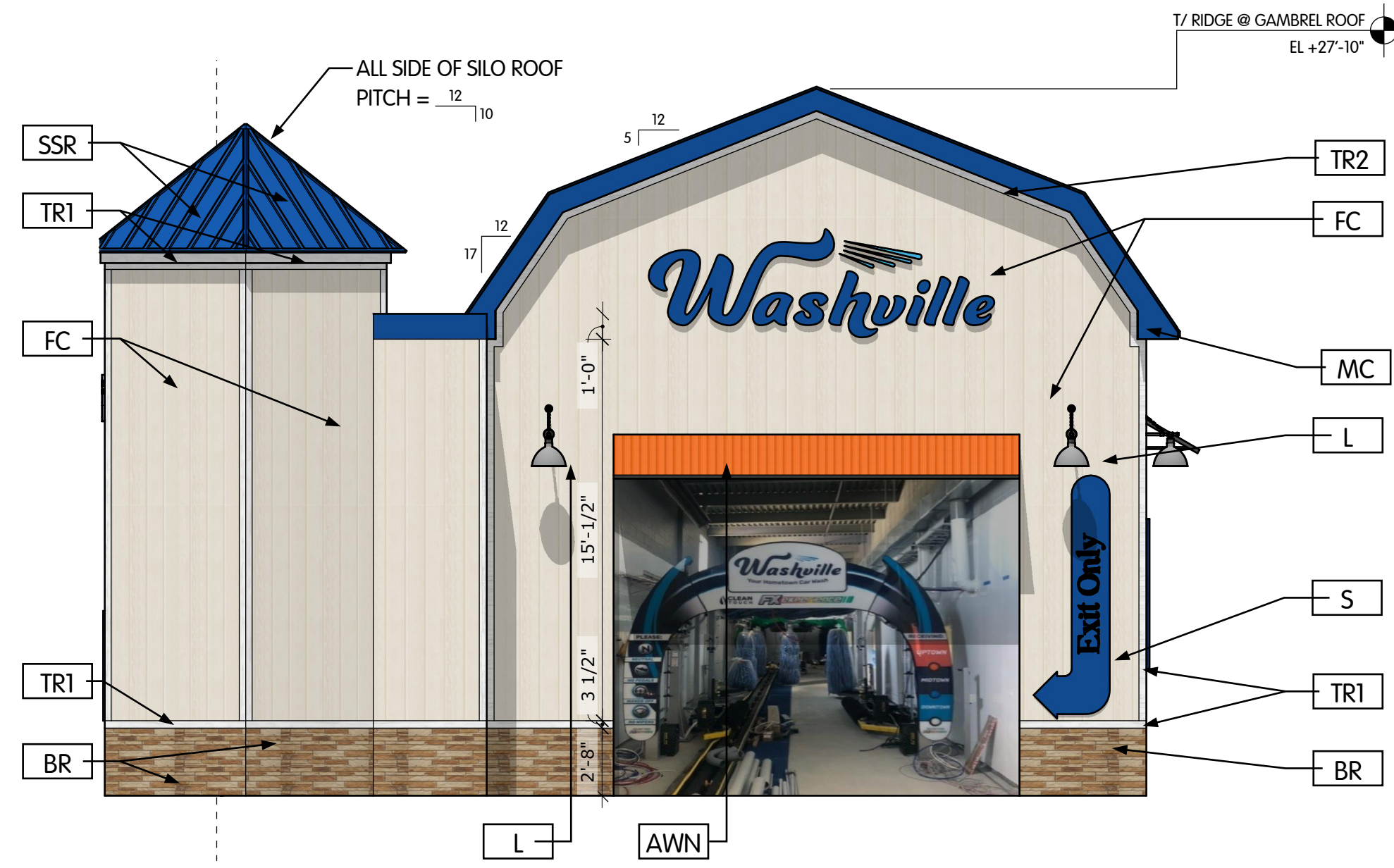


1 FLOOR PLAN
SCALE: 3/16" = 1'-0"

FLOOR PLAN KEYNOTES	
1	WATER DISPENSER BY OTHERS
2	CAR WASH EQUIPMENT BY VENDOR
3	LINE OF GAMBLE ROOF ABOVE
4	CORRUGATED METAL CANOPY SEE DETAIL 2 / A503 FOR MORE INFORMATION
5	DOWNSPOUT AND OVERFLOW DRAINS SEE PLUMBING
6	MILLWORK BY GC
7	WALL SHELVES BY GC
8	PROVIDE WOOD BLOCKING FOR SHELVING INSTALLATION
9	PROVIDE WOOD BLOCKING FOR EQUIPMENT
10	LINE OF SILO ROOF ABOVE

LEGEND	
	KEY NOTE
	WINDOW TAG SEE A600
	WALL TYPE TAG. SEE 2/A100
	DOOR TAG SEE A600

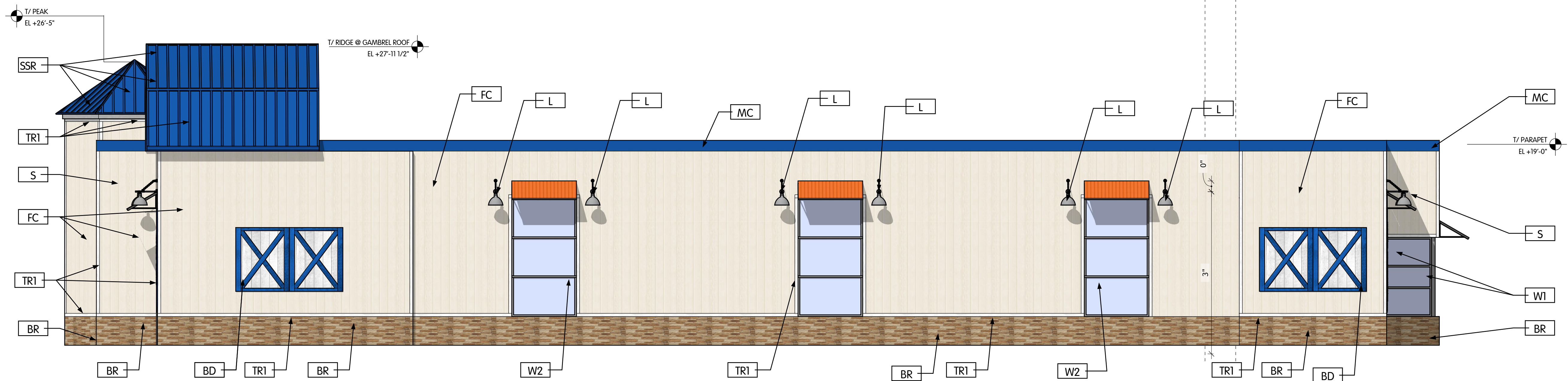
- GENERAL FLOOR PLAN NOTES**
- GENERAL CONTRACTOR SHALL CONSULT WITH THE CONSTRUCTION MANAGER TO RESOLVE ANY CHANGES, OMISSIONS OR PLAN DISCREPANCIES PRIOR TO BIDDING OR CONSTRUCTION.
 - ALL WORK SHALL BE PERFORMED IN STRICT COMPLIANCE WITH LOCAL, COUNTY, STATE AND FEDERAL CODES AND ORDINANCES.
 - GENERAL CONTRACTOR SHALL VERIFY THE LOCATION OF ALL SITE UTILITIES.
 - GENERAL CONTRACTOR TO VERIFY ALL DIMENSIONS, INCLUDING CLEARANCES REQUIRED BY OTHER TRADES AND NOTIFY CONSTRUCTION MANAGER OF ANY DISCREPANCIES PRIOR TO PROCEEDING WITH THE WORK. ALL DIMENSIONS ARE TO THE FACE OF THE FINISHED SURFACE UNLESS NOTED OTHERWISE. ALL DIMENSIONS TO BE TAKEN FROM DESIGNATED DATUM POINT. DO NOT SCALE DRAWINGS.
 - GENERAL CONTRACTOR SHALL RETAIN ONE SET OF THE PLANS TO NOTE AND DOCUMENT ALL CHANGES DURING CONSTRUCTION. THIS SET SHALL BE A PART OF THE GENERAL CONTRACTOR'S "CLOSE-OUT" AS DESCRIBED IN THE CONSTRUCTION MANAGEMENT AGREEMENT.
 - GENERAL CONTRACTOR IS RESPONSIBLE FOR COORDINATING DELIVERY OF MATERIALS FROM THIRD PARTY LOGISTICS DISTRIBUTION SERVICES AND VENDOR DIRECT SHIPMENTS. REFER TO CONSTRUCTION MANAGEMENT AGREEMENT FOR METHODS AND LEAD TIMES.
 - RESPONSIBILITY FOR SUPPLY AND DELIVERY OF MATERIALS AND EQUIPMENT IS IDENTIFIED IN THE DRAWING SCHEDULE SHEETS UNDER THE COLUMN LABELED "RESPONSIBILITY".
 - FOR THE PURPOSE OF THE DOCUMENTS, TO "INSTALL", SHALL MEAN TO PROVIDE ALL FASTENERS, MISCELLANEOUS HARDWARE, BLOCKING, ELECTRICAL CONNECTIONS, PLUMBING CONNECTIONS, AND OTHER ITEMS REQUIRED FOR A COMPLETE AND OPERATIONAL INSTALLATION, UNLESS OTHERWISE NOTED.
 - ALL ITEM SUBSTITUTIONS MUST BE APPROVED BY THE DESIGN MANAGER.
 - REFER TO EQUIPMENT DRAWINGS FOR ADDITIONAL INFORMATION.



1 ENTRANCE SIDE ELEVATION
Scale: 3/16" = 1'-0"

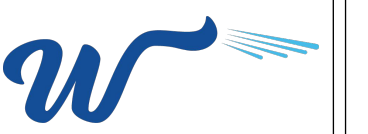
EXTERIOR FINISH / MATERIAL LEGEND		
AWN	STANDING SEAM METAL ROOF PAINTED P3	P3 PAINT SHERWIN WILLIAMS INVIGORATE - SW 6886 EXTERIOR GRADE
BD	FAUX BARN DOORS 2x6 SURFACE APPLIED STAINED FAUX BARN DOORS W/ BEADED PANELING INFILL	P4 PAINT SHERWIN WILLIAMS GRAY SHINGLE - SW 7670 EXTERIOR GRADE
BR	STACKED STONE	S BUILDING SIGNAGE PERMITTED & INSTALLED BY OTHERS
D1	ALUMINUM ENTRY DOOR ANODIZED ALUMINUM	SSR STANDING SEAM METAL ROOF PERMACOLOR: SIERRA TAN (or equivalent)
D2	HOLLOW METAL DOOR EQUIPMENT ROOM DOOR	TR1 FIBER CEMENT TRIM HARDIE TRIM BOARDS SMOOTH 4" x 96" x 1" PAINTED P1
D3	HOLLOW METAL DOOR EQUIPMENT ROOM DOUBLE DOOR	TR2 FIBER CEMENT TRIM HARDIE TRIM BOARDS SMOOTH 10" x 96" x 1" PAINTED P1
D4	OVERHEAD COILING DOOR VENDING AREA FACTORY FINISH	TR3 FIBER CEMENT TRIM HARDIE TRIM BOARDS SMOOTH 4" x 96" x 1" PAINTED P2
FC	FIBER CEMENT PANELING JAMES HARDIE SIERRA 8 - HARDIE PANELING - VERTICAL CUSTOM WASHVILLE CREME COLOR	W1 WINDOW CR LAURENCE US ALUMINUM - FLUSH FRONT SERIES 451 CLEAR ANODIZED REFER TO SHEET A 601 FOR MORE INFORMATION
L	EXTERIOR PENDANT LIGHT T.B.D.	W2 WINDOW CR LAURENCE US ALUMINUM - FLUSH FRONT SERIES 451 CLEAR ANODIZED - GLAZING TO BE OPAQUE REFER TO SHEET A 601 FOR MORE INFORMATION
MC	METAL COPING ALUMINUM PAINTED P4	
P1	PAINT SHERWIN WILLIAMS PURE WHITE - SW 7005 EXTERIOR GRADE	
P2	PAINT SHERWIN WILLIAMS HYPER BLUE - SW 965 EXTERIOR GRADE	

*ALL D2, D3, D4 EXTERIOR DOOR FINISHES TO USE FACTORY FINISH CLOSEST COLOR MATCH TO P4



2 NON-PARKING SIDE ELEVATION
Scale: 3/16" = 1'-0"

TOTAL BUILDING SQUARE FOOTAGE = 2,233 SQFT
AREA OF GLAZING FACING STREET = 480 SQFT
480SQFT = 21.5% OF TOTAL AREA (meets municipality requirements of 20-60% glazing facing street)



SEAL

REVISIONS
DESCRIPTION
MUNICIPALITY COMMENTS

NO
1

PROJECT INFORMATION
WASHVILLE CAR WASH
931 W MAIN STREET | MIDDLETOWN, RI 02842

EXTERIOR ELEVATIONS

SHEET MANAGEMENT
PROJECT #: WAS04-078
DATE ISSUED: 01/25/22
DRAWN BY: RC
REVIEWED BY: PK

SHEET NUMBER

A200



1 EXTERIOR PERSPECTIVE 1
A300 Scale: 3/16" = 1'-0"

2 EXTERIOR PERSPECTIVE 2
A300 Scale: 3/16" = 1'-0"



3 EXTERIOR PERSPECTIVE 3
A300 Scale: 3/16" = 1'-0"

4 EXTERIOR PERSPECTIVE 4
A300 Scale: 3/16" = 1'-0"



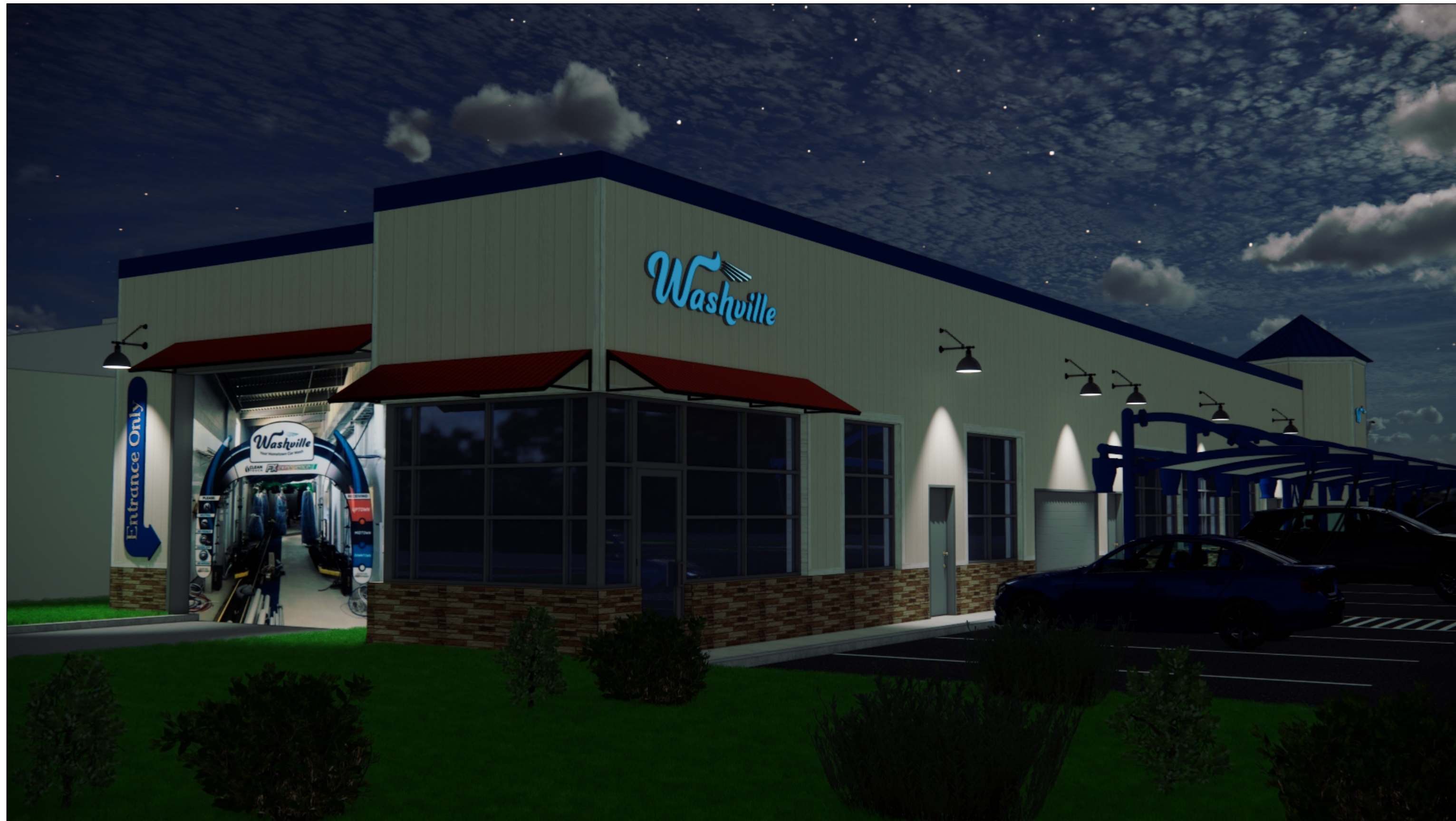
SEAL

NO	REVISIONS	DESCRIPTION	MUNICIPALITY COMMENTS
1			

PROJECT INFORMATION
WASHVILLE CAR WASH
931 W MAIN STREET | MIDDLETOWN, RI 02842
EXTERIOR RENDERERS - DAY

SHEET MANAGEMENT	PROJECT #	DATE ISSUED	DRAWN BY	REVIEWED BY
	WAS04-078	01/25/22	RC	PK

SHEET NUMBER
A300



sevan
DESIGN SOLUTIONS, P.C.
Corporate Office:
3025 Highland Parkway | Suite 850
Downers Grove, IL 60515
info@sevan.com | www.sevan.com

INTEGRITY | RESPECT | TEAMWORK
EXCELLENCE | CHARITY



SEAL

1 EXTERIOR PERSPECTIVE 1
A300 Scale: 3/16" = 1'-0"

2 EXTERIOR PERSPECTIVE 2
A300 Scale: 3/16" = 1'-0"



3 EXTERIOR PERSPECTIVE 3
A300 Scale: 3/16" = 1'-0"

4 EXTERIOR PERSPECTIVE 4
A300 Scale: 3/16" = 1'-0"

NO	REVISIONS	DESCRIPTION	MUNICIPALITY COMMENTS
1			

PROJECT INFORMATION
WASHVILLE CAR WASH
931 W MAIN STREET | MIDDLETOWN, RI 02842
EXTERIOR RENDER - NIGHT

SHEET MANAGEMENT	PROJECT #:	WAS04-078
	DATE ISSUED:	01/25/22
	DRAWN BY:	RC
	REVIEWED BY:	PK

SHEET NUMBER
A301