



City of Middletown  
Attn: Planning Board  
350 East Main Road  
Middletown, RI 02842  
P: 401-849-4027

**SUBJECT: 25 East Main Road, Entrance Material Change Request**

Dear Board,

This letter of intent is to request a change in material at the entrance to the Citizens Bank at 25 East Main Road.

The current finish that we would like to replace is the wood lap siding within the gable above the main entry doors and the vertical flat panels between the existing pilasters and the aluminum storefront entry. Please see attached proposed demolition and new of the entry (Exhibit A) along with photos of the existing condition (Exhibit C).

The new siding material we are proposing is NewTechWood composite siding installed horizontally (See Exhibit C, material labeled with CL-4 tag). Proposed color is to be Brazilian Ipe with a wood grain pattern. Submitted with this letter is a sample material (Exhibit D). At the edges of the material a cap of the same material and finish gets installed to cover the ends of the composite.

Please let us know if there are any questions about any information provided.

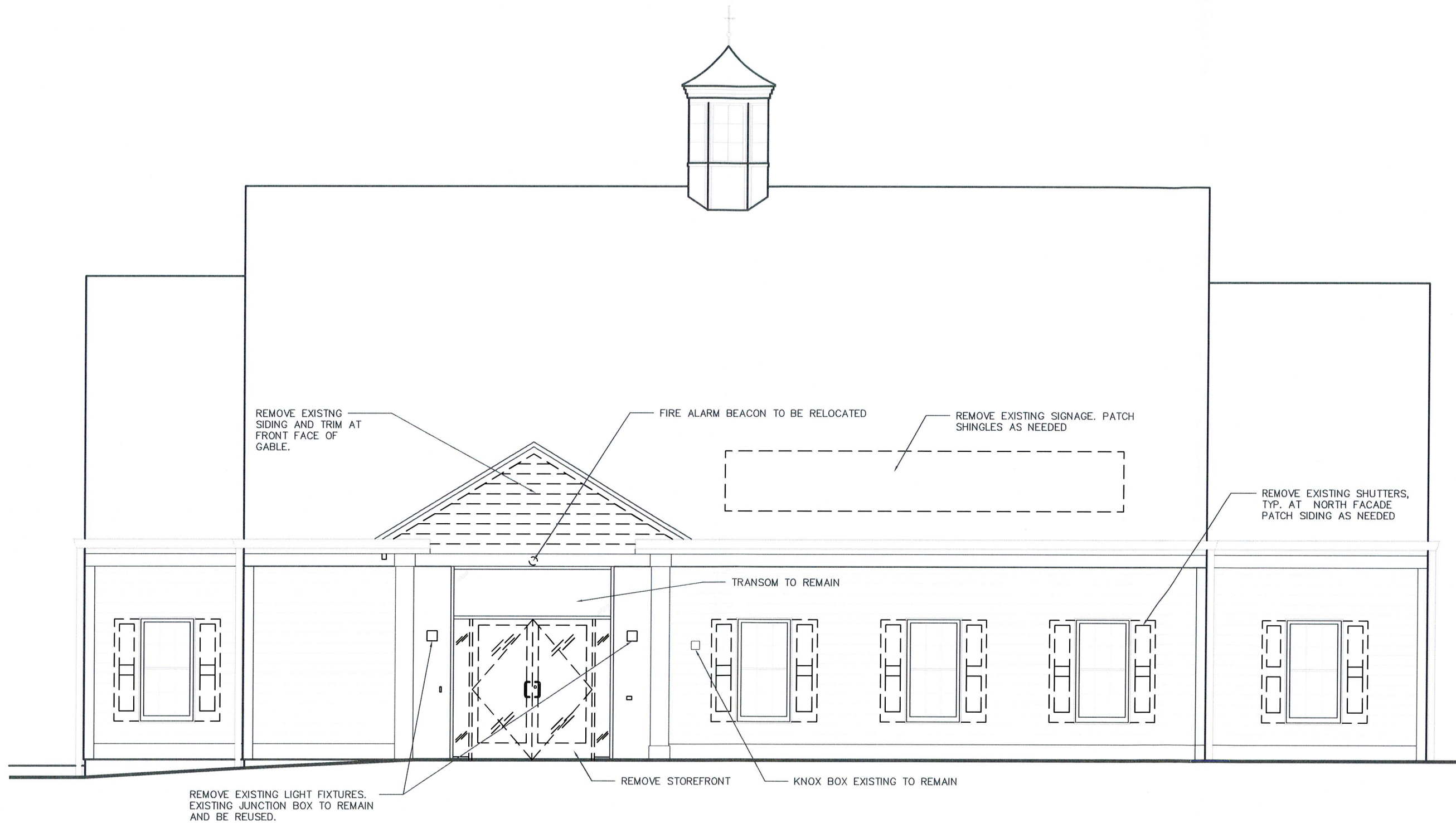
Erin K. D'Allesandro  
Senior Project Manager  
**BISBANO + ASSOCIATES, INC.**  
188 Valley Street | Suite 100 | Providence, RI 02909  
302.222.4498 mobile | 401.404.8310,512  
E-mail: [edallesandro@bisbano.com](mailto:edallesandro@bisbano.com) | Website: [www.bisbano.com](http://www.bisbano.com)

**Attachments:**

- Exhibit A – Proposed Demo Elevation
- Exhibit B - Photos
- Exhibit C – Proposed New Elevation
- Exhibit D - Sample

EXHIBIT B





# PROPOSED ENTRY DEMOLITION PLAN

SCALE: 3/16"=1'-0"

DATE: 07/15/22

**B I S B A N O + A S S O C I A T E S , I N C .**

RISING SUN MILLS, 188 VALLEY ST, SUITE 100 PROVIDENCE, RI 02909  
 VOICE 401.404.8310 FAX 401.404.8311 WWW.BISBANO.COM

**Citizens**

MIDDLETOWN  
 25 East Main Rd  
 Middletown, RI 02842

**Exhibit A**

REF. DWG. A10.01

