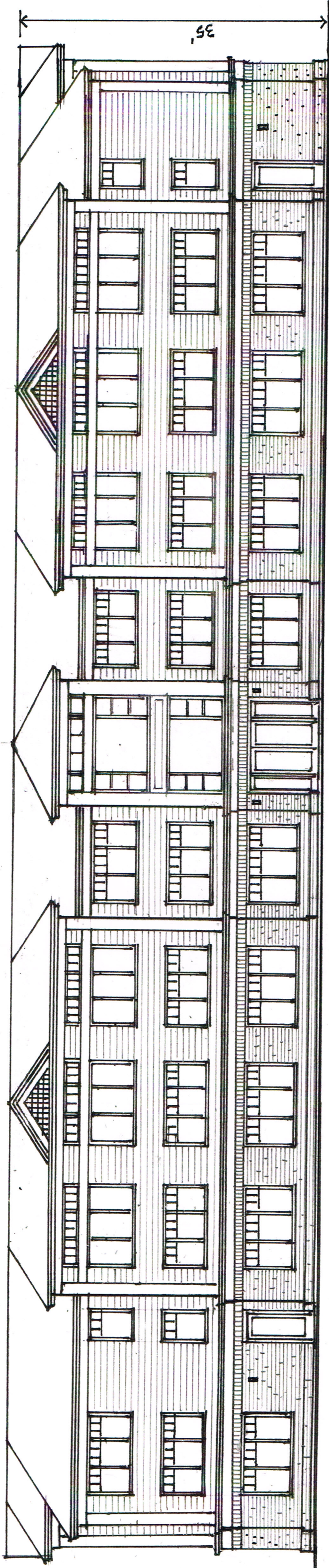


WALL AREA :  $171' \times 28' = 4788 \text{ SF}$   
 $88 \times 2.5 = 220 \text{ SF}$

TOTAL WALL AREA = 5,008 SF

GLASS AREA :  $14.9' \times 27' = 402 \text{ SF}$   
 $11.7 \times 58 = 679 \text{ SF}$   
 $3.2 \times 18 = 702 \text{ SF}$   
 $9.6 \times 4 = 38 \text{ SF}$   
 $70 \times 2 = 140 \text{ SF}$   
 $10 \times 1.5 = 15 \text{ SF}$

TOTAL GLASS AREA = 1938 SF  
 % GLASS TO WALL AREA = 38 %



East Elevation

PROJECT:

Wyndham Hotel  
 Middletown, RI

PAUL D. BURKE ARCHITECT  
 AIA, N.CARB  
 511 VALUCLURE AVE  
 MIDDLETOWN, RI  
 401-849-4888