

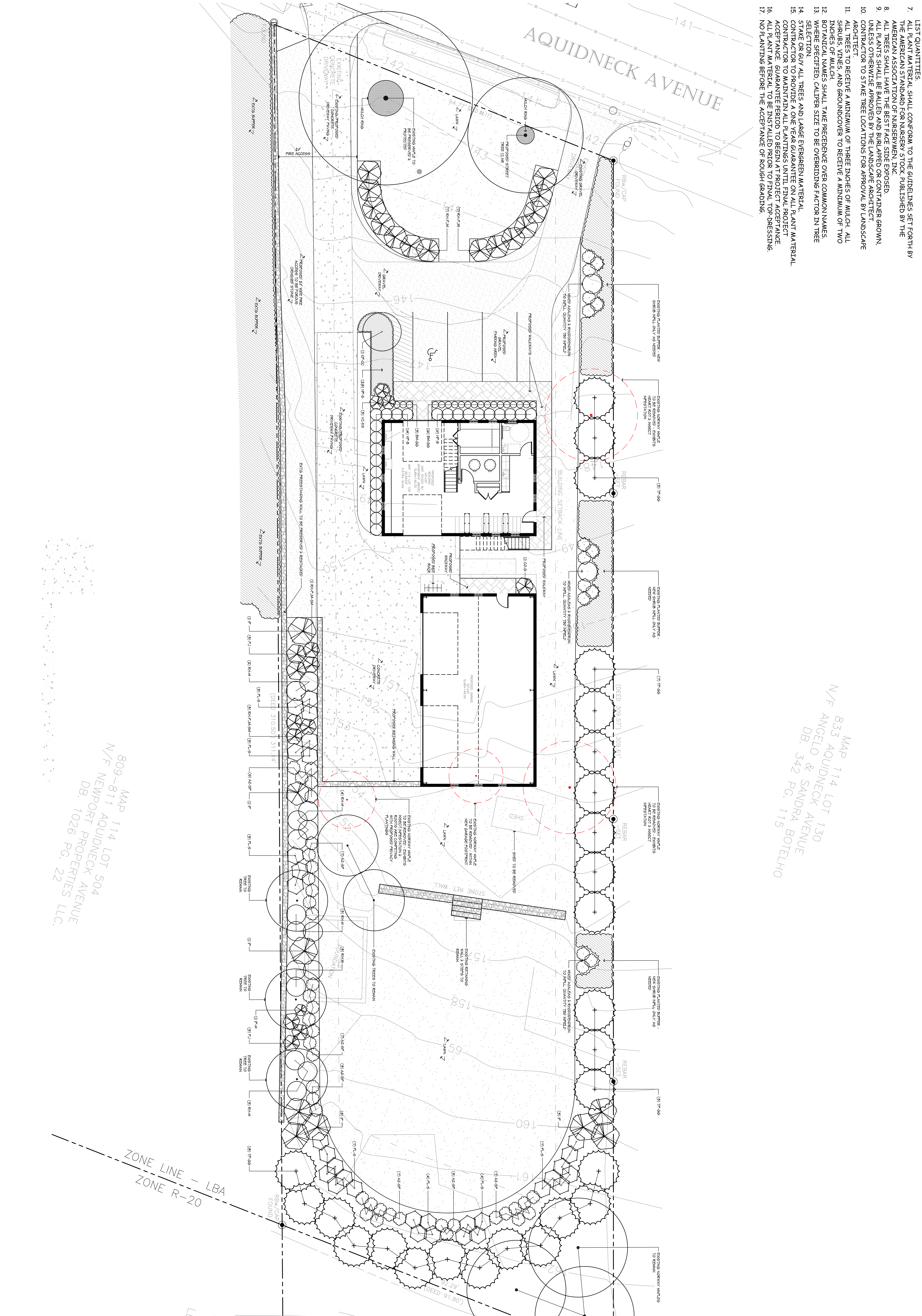
PLANT SCHEDULE:

1. ALL PLANTS TO HAVE THE SAME RELATIONSHIP TO FINISH GRADE AFTER SETTLEMENT AS TO THEIR ORIGINAL GRADE BEFORE DIGGING. LOCATE PLANT COLLAR TWO OR THREE INCHES HIGHER THAN PLANTING SOIL MIX TO ENSURE CORRECT FINAL RELATIONSHIP.
2. APPLY AN APPROVED ANTI-DESICCANT TO ALL PLANTS IN LEAF AT PLANTING TIME, AND TO ALL EVERGREENS BEFORE THEIR FIRST WINTER.
3. FLOOD ALL PLANTS WITH CLEAN WATER TWICE IN THE FIRST 24 HOURS AFTER PLANTING. CONTRACTOR TO ARRANGE FOR ALL PLANTS TO BE PLANTED WITHIN THREE DAYS AFTER DELIVERY TO THE SITE UNLESS OTHERWISE SPECIFIED BY THE LANDSCAPE ARCHITECT.
4. NEVER CUT LEAFY BRANCHES FROM EVERGREEN PLANTS.
5. TRIM ONLY BROKEN OR DEAD BRANCHES FROM EVERGREEN PLANTS.
6. THE CONTRACTOR SHALL SUPPLY ALL PLANT MATERIAL AND MULCH IN SUFFICIENT QUANTITIES TO COMPLETE PLANTING AS SHOWN ON THE DRAWINGS. DRAWING QUANTITIES TAKE PRECEDENCE OVER THE PLANT LIST QUANTITIES.
7. ALL PLANT MATERIAL SHALL CONFORM TO THE GUIDELINES SET FORTH BY THE AMERICAN STANDARD FOR NURSERY STOCK, PUBLISHED BY THE AMERICAN ASSOCIATION OF NURSERYMEN, INC.
8. ALL TREES SHALL HAVE THE BEST FACE SIDE EXPOSED.
9. ALL PLANTS SHALL BE BALLED AND BURLAPPED OR CONTAINER GROWN, UNLESS OTHERWISE APPROVED BY THE LANDSCAPE ARCHITECT.
10. CONTRACTOR TO STAKE TREE LOCATIONS FOR APPROVAL BY LANDSCAPE ARCHITECT.
11. ALL TREES TO RECEIVE A MINIMUM OF THREE INCHES OF MULCH. ALL SHRUBS OF ONE AND A HALF INCHES TO RECEIVE A MINIMUM OF TWO INCHES OF MULCH. ALL BROADLEAF TREES TO RECEIVE A MINIMUM OF TWO WHERE SPECIFIED. CALIPER SIZE TO BE OVERRIDING FACTOR IN TREE SELECTION.
12. STAKE OR GUY ALL TREES AND LARGE EVERGREEN MATERIAL.
13. CONTRACTOR TO PROVIDE A ONE YEAR GUARANTEE ON ALL PLANT MATERIAL. ACCEPTANCE GUARANTEE PERIOD TO BEGIN AT PROJECT ACCEPTANCE.
14. ALL PLANT MATERIAL TO BE INSTALLED PRIOR TO FINAL TOP DRESSING.
15. NO PLANTING BEFORE THE ACCEPTANCE OF ROUGH GRADING.

PLANT SCHEDULE:

QTY	SYMB	BOTANICAL NAME	COMMON NAME	SIZE	ROOT BALL	COMMENT
1	ZR	None returned	Swamp Red Maple	4" CA	BAB	
18	BAGS	Bassia rubra	Orange Gum Buckeye	4" CA	CONT	suggested varieties for Palm Beach, Wilton, Padmanaba, Karan, Tradler, Rain Fly, America or Microcladum
1	CF-CG	Cornus florida 'Cherokee Chief'	Cherry	4" CA	BAB	specimen - clamp form
1	CF-CG	Chamaecyparis obtusa 'Gonolona'	Clump Japanese Cedar	7.8"	BAB	
28	HS-S	Hypericum androsaemum 'Spectabile'	St. John's Wort	4" CA	CONT	
9	IP	Ipomoea pes-caprae (female)	Female longstalked HOY	6-7"	BAB	must exhibit broad stems from top to bottom, lighty joints, unseparated
1	IP-MJ	Ipomoea pes-caprae (male)	Male longstalked HOY	6-7"	CONT	
6	PJ	Pinus strobus 'Dorothy Wycoff'	Dorothy Wycoff	3-4"	BAB	
31	HS-S	Pinus strobus 'Spartan'	Scotch Pine	4-5"	BAB	
14	RH-HALG	Rhododendron 'Palm Linn'	Palm Rhododendron	4-5"	BAB	Heavy Stock
4	RH-HALM	Rhododendron 'Palm Small'	Palm Rhododendron	3-4"	BAB	
26	TR-CG	Thuja occidentalis 'Green Gem'	Green Gem Arborvitae	10-12"	PROVL	
3	VO-20	Veronica sp.	Veronica	10-12"	CONT	

FOR PERMITTING ONLY - NOT FOR CONSTRUCTION



MAP 114 LOT 130
 833 AQUIDNECK AVENUE
 N/F ANGELO & SANDRA BOTELHO
 DB, 342 PG. 115

MAP 114 LOT 504
 809-811 AQUIDNECK AVENUE
 N/F NEWPORT PROPERTIES LLC
 DB, 1026 PG. 22



PROPOSED LANDSCAPE PLAN

SHEET: **1.0**

WALLACE RESIDENCE

819 AQUIDNECK AVE, MIDDLETOWN, RI 02842

INTEGRITY DESIGN GROUP, INC.

LANDSCAPE ARCHITECTURE & SITE PLANNING

540 THAMES STREET
 NEWPORT, RI 02880
 P: 401.846.1510
 C: 401.474.8844

www.integritydesign.com
 A Rhode Island Corporation

REVISIONS:

12/02/20
 12/04/20
 03/31/21
 04/12/21

DATE: 11/30/20

DRAWN BY: PS/MD

CHECKED BY: PS

SCALE: 1/8" = 1'-0"