



RHODE ISLAND DEPARTMENT OF ENVIRONMENTAL MANAGEMENT
OFFICE OF WATER RESOURCES
235 Promenade Street
Providence, Rhode Island 02908

April 18, 2024
Application No. 23-0170

NOTICE

The Department of Environmental Management's ("DEM") Freshwater Wetlands Program ("Program") has under consideration the application of Rhode Island Airport Corporation, 2000 Post Road, Warwick, RI 02886 requesting permission to alter freshwater wetlands in the Town of Middletown.

The proposed project is located approximately 2000-feet north of Forest Avenue and approximately 2,500-feet west of its intersection with West Main Road (Route 114) at Newport State Airport, Assessor's Plat 112, Lot 24A, Middletown, RI.

The freshwater wetlands affected by the proposed project include at least five shrub swamps, a deciduous forested swamp with interior marsh, a Phragmites marsh, a wet meadow, two intermittent streams, a river (tributary to Bailey Brook) and associated buffer zones and buffer.

The purpose of the proposed alteration is for the removal of vegetation within the protected airspace in order to satisfy Federal Aviation Administration (FAA) safety standards.

The proposed alterations to freshwater wetlands consist of at least selective clearing and other construction related disturbance within the above-noted freshwater wetlands.

The project, as proposed, will result in the alteration and/or disturbance of approximately 563,231 square feet (12.93 acres) of freshwater wetlands as well as approximately 1,920 linear feet of watercourses, as noted above.

Full-sized site plans illustrating the proposed project and detailing freshwater wetlands to be altered have been furnished to the Middletown Town Council and the Middletown Town Clerk's Office. These may be viewed at the Town Offices or at our Offices. A reduced-sized set of site plans has been provided with this **NOTICE**.

This NOTICE is not authorization to do any work or to proceed with the project.

The purpose of this **NOTICE** is to inform all landowners whose properties are within two hundred feet (200') of the proposed project, the Town Councils, the Conservation Commissions, the Planning Boards, the Zoning Boards, and any other interested individuals and agencies of the proposal and to provide for a period of forty-five (45) days (NOTICE Period) within which concerns or comments may be received. Any comments and/or objections received during the NOTICE period shall be used to evaluate the proposed project and its impacts upon freshwater wetland functions and values.

You are advised that if you desire to submit a statement or have a good reason to enter a protest against the proposed project, it is your privilege to do so. Objections to the proposed project must relate to the proposed project's impacts on the functions and values provided by the freshwater wetlands to be altered.

Such functions and values include but are not limited to:

- 1) Protection of life and/or property from flooding or flood flows by retaining, storing, metering, or slowing flood waters from storm events;
- 2) Providing and maintaining surface and/or groundwater supplies by acting as a recharge or discharge area;
- 3) Providing and maintaining valuable wildlife habitats;
- 4) Providing and maintaining high value recreation areas; and
- 5) Protecting and maintaining water quality.

Information regarding the Program's practices and procedures for evaluating such comments, any definitions, or further information on wetland functions and values may be obtained by consulting the Rules and Regulations Governing the Administration and Enforcement of the Freshwater Wetlands Act, 250-RICR-150-15-3.

In accordance with 250-RICR-150-15-3.12.4 (C)(1), comments filed with the DEM will be considered if they are in writing, are legible, contain a discernable name and address, are signed and are received during the Forty-five (45) day NOTICE period. The application number appearing in this NOTICE or other information which will identify the comments to the proposed project is also required. **Comments sent via email will not be considered.** The NOTICE period for this application ends at 4:00 p.m. on June 3, 2024. This Program cannot extend this NOTICE period.

Anyone wishing to review the file in this matter should contact the Office of Customer and Technical Assistance in advance (telephone: 401-537-4029 or Email: DEM.filereview@dem.ri.gov) to arrange an appointment.

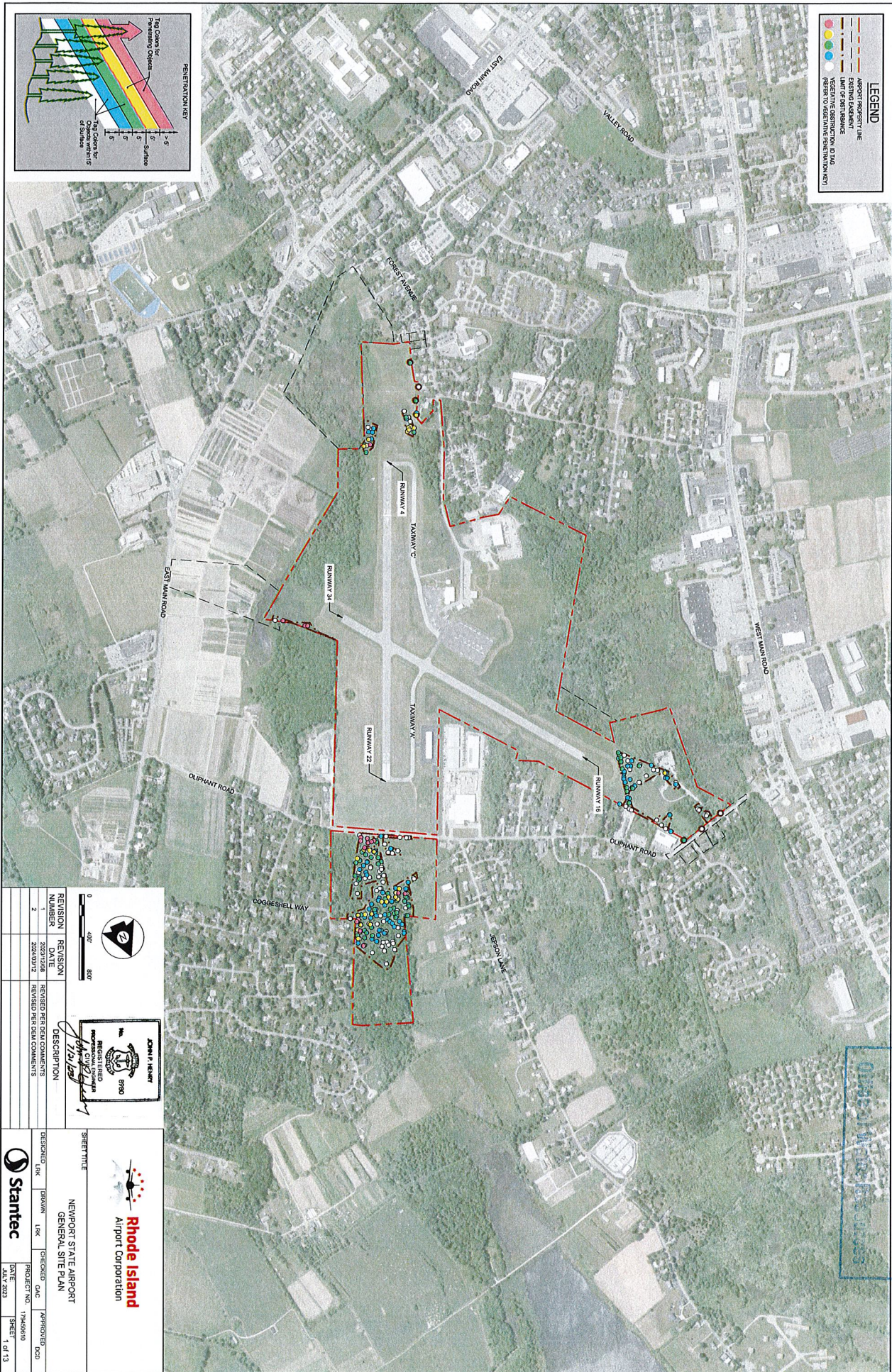
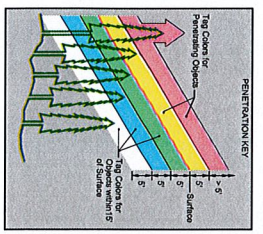
Sincerely,

Martin D. Wencsek, Environmental Scientist IV
Freshwater Wetlands Program
Office of Water Resources

MDW/SGD/sgd

LEGEND

- AIRPORT PROPERTY LINE
- EXISTING EASEMENT
- LIMIT OF DISTURBANCE (FOR ALL TIAO REFER TO VERTICAL DIMENSION KEY)
- (Red) Obstruction
- (Yellow) Obstruction
- (Green) Obstruction
- (Blue) Obstruction



RI Environmental Management
APR - 5 2024

Obstruction Resources

	JOHN F. HANLEY REGISTERED PROFESSIONAL CIVIL ENGINEER No. 13118
REVISION NUMBER	REVISION DATE
1	2023/12/28
2	2024/03/12
DESCRIPTION	REVISION PER DEN COMMENTS

Stantec

NEWPORT STATE AIRPORT
GENERAL SITE PLAN

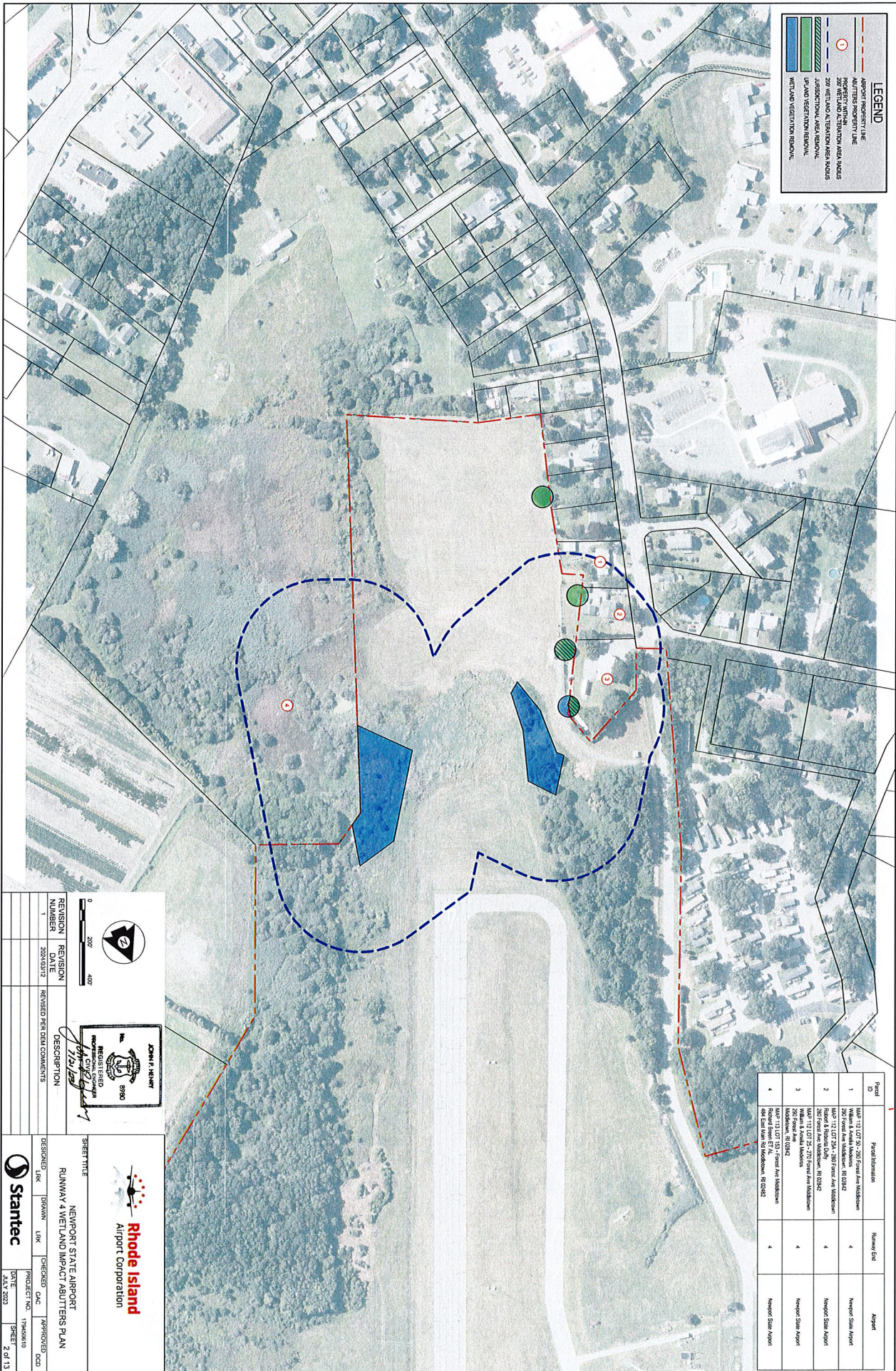
DATE: JAN 2023

PROJECT NO: 179420910

SHEET 1 of 13

LEGEND

- AIRPORT PROPERTY LINE
- ADJUTERS PROPERTY LINE
- PROPERTY WITH 200' BUFFER FROM RUNWAY CENTERLINE
- 200' WETLAND AND TERNITIA AREA BUFFER
- JURISDICTIONAL AREA REMOVAL
- UP-LAND RESTORATION REMOVAL
- WETLAND RESTORATION REMOVAL



Parcel ID	Parcel Information	Runway End	Airport
1	APR 12 12 07 25 - 257 Front Ave Middletown, RI 02842 Middle Ave Middletown, RI 02842 292 Front Ave Middletown, RI 02842	4	Middletown State Airport
2	APR 12 12 07 25A - 287 Front Ave Middletown, RI 02842 287 Front Ave Middletown, RI 02842 APR 12 12 07 25 - 277 Front Ave Middletown, RI 02842 292 Front Ave Middletown, RI 02842	4	Middletown State Airport
3	APR 12 12 07 25 - 277 Front Ave Middletown, RI 02842 292 Front Ave Middletown, RI 02842	4	Middletown State Airport
4	APR 12 12 07 25 - 277 Front Ave Middletown, RI 02842 292 Front Ave Middletown, RI 02842	4	Middletown State Airport

0 200' 400'

JOHN F. HENRY
REGISTERED PROFESSIONAL CIVIL ENGINEER
No. 5980
1/13/18

REVISION NUMBER 1
REVISION DATE 2/27/2012
REVISION DESCRIPTION
REVISION PERIODIC COMMENTS

Stantec

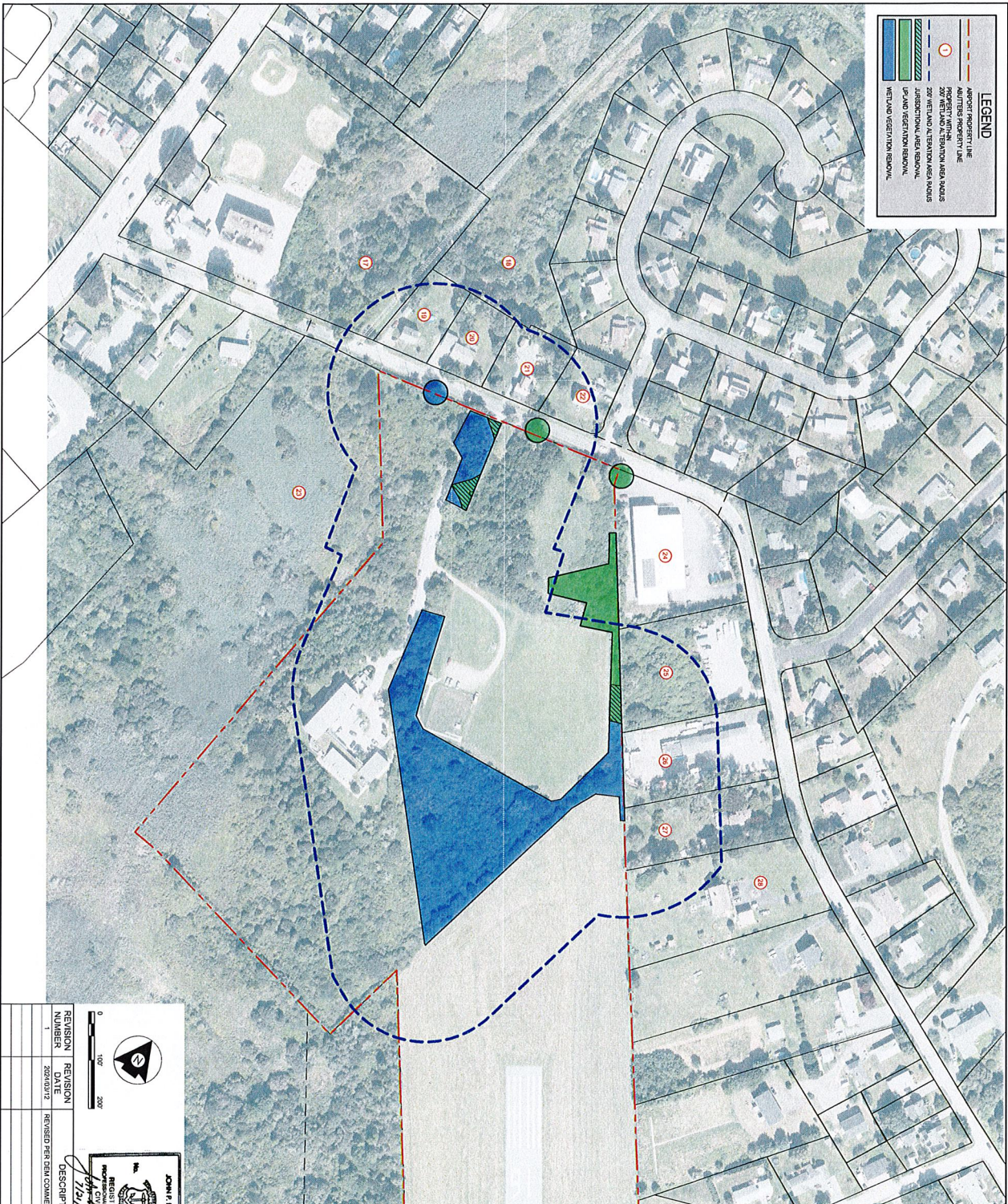
DESIGNED LINK
DRAWN LINK
CHECKED PJC
PROJECT NO. 179406810
DATE 1/21/2012
SHEET 2 of 13

Rhode Island Airport Corporation

SHEET TITLE
MIDDLETOWN STATE AIRPORT
RUNWAY 4 WETLAND IMPACT ADJUTERS PLAN

LEGEND

- AIRPORT PROPERTY LINE
- PROPERTY WITH IN-FLIGHT AREA ADJACENT TO RUNWAY AND TAXIWAY AREAS
- JURISDICTIONAL AREA REMOVAL
- UP-LAND RESTRICTION REMOVAL
- WETLAND RESTRICTION REMOVAL



Point ID	Project Information	Runway End	Airport
17	Map 111.0717B - 28' Oblique LA Town of Middletown, RI 02842	16	Newport State Airport
18	Map 111.0717B - 28' Oblique LA Middleton, RI 02842	16	Newport State Airport
19	Map 111.0717B - 28' Oblique LA Middleton, RI 02842	16	Newport State Airport
20	Map 111.0717B - 28' Oblique LA Middleton, RI 02842	16	Newport State Airport
21	Map 111.0717B - 28' Oblique LA Middleton, RI 02842	16	Newport State Airport
22	Map 111.0717B - 28' Oblique LA Middleton, RI 02842	16	Newport State Airport
23	Map 111.0717B - 28' Oblique LA Middleton, RI 02842	16	Newport State Airport
24	Map 111.0717B - 28' Oblique LA Middleton, RI 02842	16	Newport State Airport
25	Map 111.0717B - 28' Oblique LA Middleton, RI 02842	16	Newport State Airport
26	Map 111.0717B - 28' Oblique LA Middleton, RI 02842	16	Newport State Airport
27	Map 111.0717B - 28' Oblique LA Middleton, RI 02842	16	Newport State Airport
28	Map 111.0717B - 28' Oblique LA Middleton, RI 02842	16	Newport State Airport

0 100' 200'

REVISION 1 2/27/2012

REVISION 2 2/27/2012

REVISION 3 2/27/2012

REVISION 4 2/27/2012

REVISION 5 2/27/2012

REVISION 6 2/27/2012

REVISION 7 2/27/2012

REVISION 8 2/27/2012

REVISION 9 2/27/2012

REVISION 10 2/27/2012

REVISION 11 2/27/2012

REVISION 12 2/27/2012

REVISION 13 2/27/2012

REVISION 14 2/27/2012

REVISION 15 2/27/2012

REVISION 16 2/27/2012

REVISION 17 2/27/2012

REVISION 18 2/27/2012

REVISION 19 2/27/2012

REVISION 20 2/27/2012

REVISION 21 2/27/2012

REVISION 22 2/27/2012

REVISION 23 2/27/2012

REVISION 24 2/27/2012

REVISION 25 2/27/2012

REVISION 26 2/27/2012

REVISION 27 2/27/2012

REVISION 28 2/27/2012

REVISION 29 2/27/2012

REVISION 30 2/27/2012

REVISION 31 2/27/2012

REVISION 32 2/27/2012

REVISION 33 2/27/2012

REVISION 34 2/27/2012

REVISION 35 2/27/2012

REVISION 36 2/27/2012

REVISION 37 2/27/2012

REVISION 38 2/27/2012

REVISION 39 2/27/2012

REVISION 40 2/27/2012

REVISION 41 2/27/2012

REVISION 42 2/27/2012

REVISION 43 2/27/2012

REVISION 44 2/27/2012

REVISION 45 2/27/2012

REVISION 46 2/27/2012

REVISION 47 2/27/2012

REVISION 48 2/27/2012

REVISION 49 2/27/2012

REVISION 50 2/27/2012

Rhode Island
Airport Corporation

STREET TITLE

NEWPORT STATE AIRPORT

RUNWAY 18 WETLAND IMPACT ABUTTERS PLAN

DESIGNED LMK

CHECKED CAC

PROJECT NO. 179420610

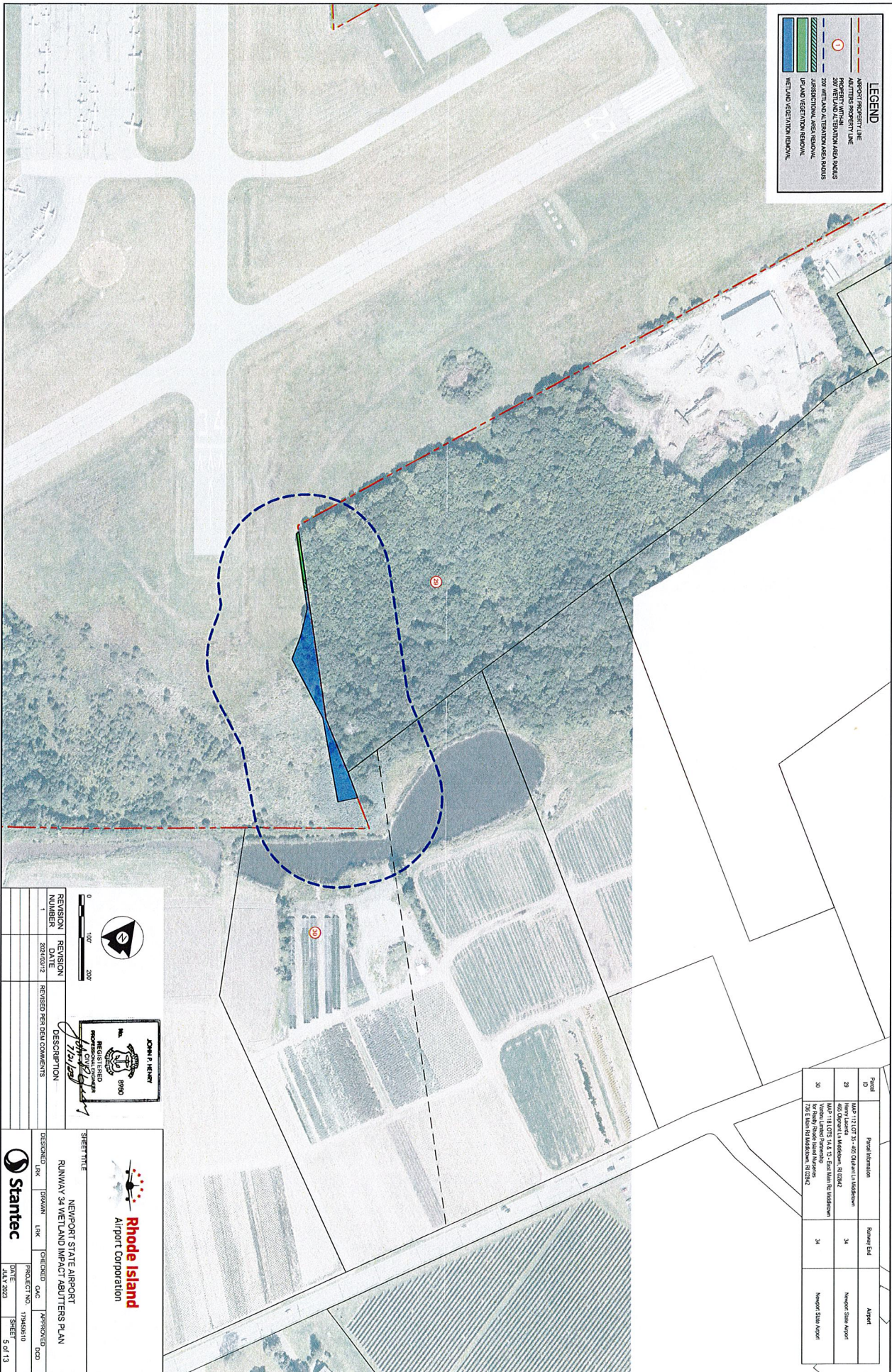
DATE MAY 2013

SHEET 4 of 13

Stantec

LEGEND

- AIRPORT PROPERTY LINE
- ADJUTERS PROPERTY LINE
- PROPERTY WITH EASEMENT AREA MAJUS
- 200' WETLAND BUFFER AREA MAJUS
- JURISDICTIONAL AREA REMOVAL
- WETLAND RESTORATION REMOVAL



Parcel ID	Parcel Information	Survey/ Easement	Airport
29	MAP 121 COT 35 - 460 Oppert Ln Middlesex 460 Oppert Ln Middlesex, 01204Z	34	Newport State Airport
30	MAP 118 COT 35 1A & 31 - East Main Rd Middlesex East Main Road West Middlesex 790 E Main Rd Middlesex, 01204Z	34	Newport State Airport

0 100' 200'

JOHN F. HENRY
REGISTERED PROFESSIONAL CIVIL ENGINEER
No. 5950
1/21/2013

REVISION NUMBER	REVISION DATE	REVISION DESCRIPTION
1	2024/03/12	REVISED PER DEAL COMMENTS

Rhode Island
Airport Corporation

Stantec

NEWPORT STATE AIRPORT
RUNWAY 24 WETLAND IMPACT ABUTTERS PLAN

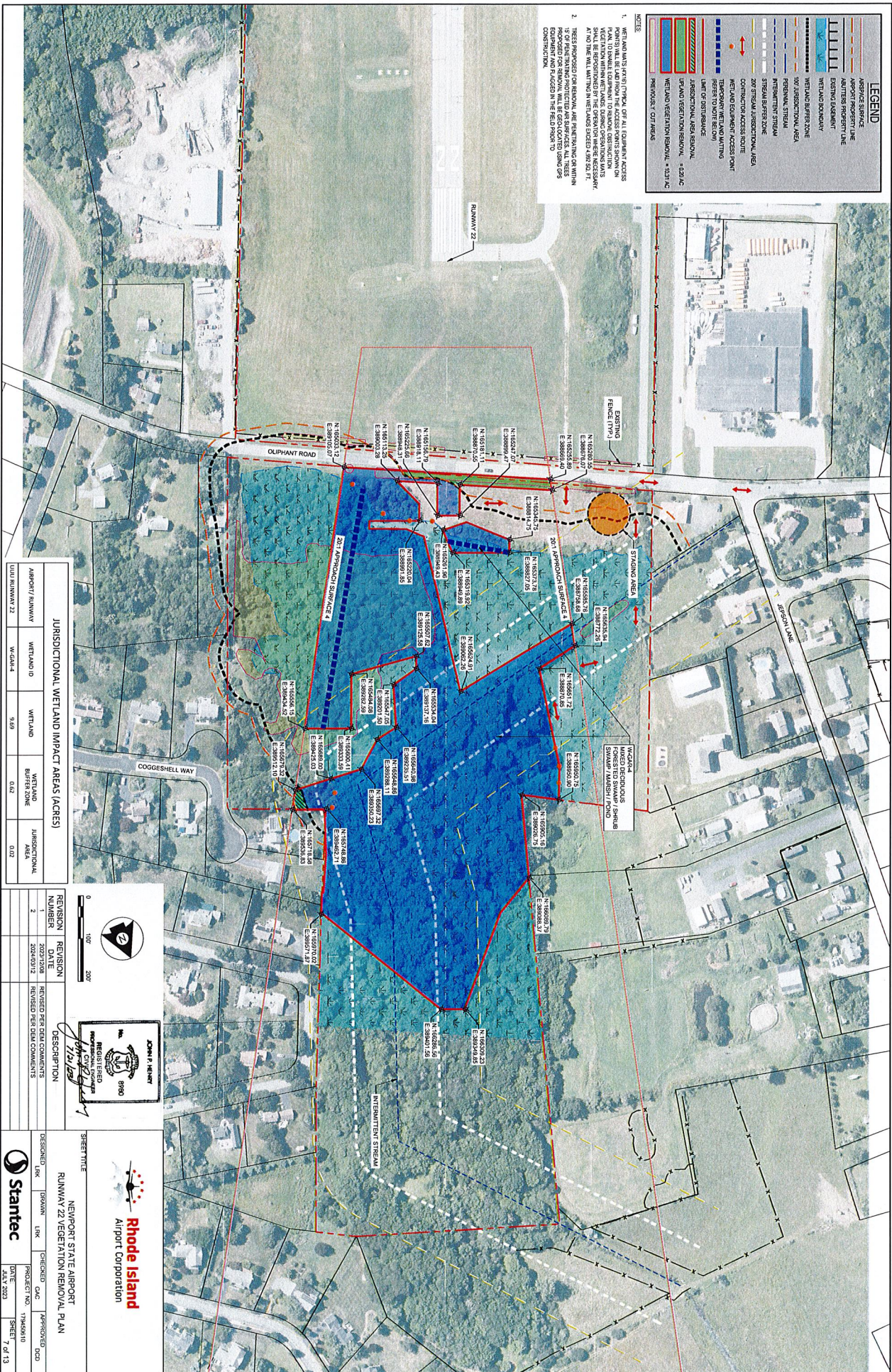
DESIGNED	DRAWN	CHECKED	APPROVED
LINK	LINK	PKC	DDP

DATE: JAN 7 2023
SHEET 5 of 13

LEGEND

- APPROACH SURFACE
- AIRPORT PROPERTY LINE
- EXISTING BOUNDARY
- WETLAND BOUNDARY
- WETLAND BUFFER ZONE
- 100' JURISDICTIONAL AREA
- PERMANENT STREAM
- PERMANENT STREAM
- SYMBIOTIC STREAM
- SYMBIOTIC STREAM
- CONSTRUCTION ACCESS POINT
- WETLAND EQUIPMENT ACCESS POINT (REFER TO NOT BELOW)
- TEMPORARY WETLAND MATING
- LIMIT OF DISTURBANCE
- JURISDICTIONAL AREA REMOVAL
- WETLAND VEGETATION REMOVAL - 1:20% AC
- PERMANENT DISTURBANCE

- ### NOTES
1. WETLAND MATING BETWEEN PERMANENT AND SYMBIOTIC STREAMS SHALL BE PERMITTED TO REMAIN UNLESS OTHERWISE SPECIFIED IN THE PLAN. TO REMAIN EQUIPMENT FOR BONDING CONSTRUCTION SHALL BE PERMITTED TO REMAIN UNLESS OTHERWISE SPECIFIED IN THE PLAN.
 2. THESE PROPOSED DISTURBANCE ARE PERMITTED WITHIN THE JURISDICTIONAL AREA REMOVAL. ALL TREES EQUIPMENT AND PLANTED IN THE FIELD SHALL BE CONSTRUCTION.



JURISDICTIONAL WETLAND IMPACT AREAS (ACRES)			
AIRPORT RUNWAY	WETLAND 10	WETLAND	JURISDICTIONAL AREA
W-GM-4	3.69	0.62	0.62
ULU RUNWAY 22			

0 100' 200'

REGISTERED PROFESSIONAL ENGINEER
JOHN P. HENRY
No. 0100000000
STATE OF RHODE ISLAND

DATE: 7/11/2019

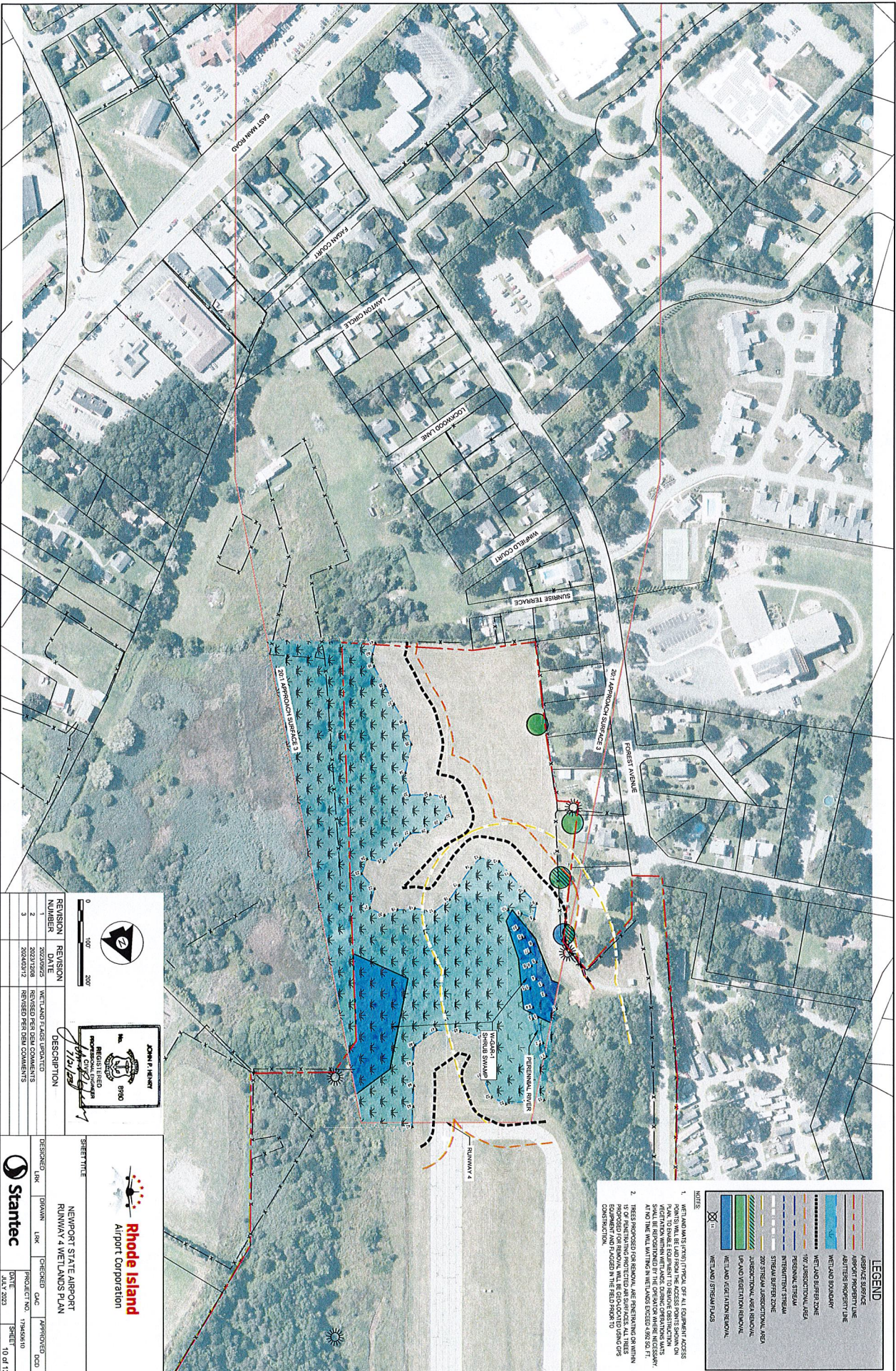
Rhode Island
Airport Corporation

SYMBOL TITLE
NEWPORT STATE AIRPORT
RUNWAY 22 VEGETATION REMOVAL PLAN

DESIGNED: LMK
DRAWN: LMK
CHECKED: CAC
PROJECT NO: 17942610
DATE: 2/21/2019
SHEET: 7 of 13

REVISION NUMBER DESCRIPTION
2 2022/12/08 REVISED PER DEED COMMENTS
2 2022/03/12 REVISED PER DEED COMMENTS





LEGEND

- ABSENCE SURFACE
- AIRPORT PROPERTY LINE
- AUTUMN PROPERTY LINE
- WETLAND BOUNDARY
- 100' JURISDICTIONAL AREA
- PERSONAL STREAM
- STREAM BUFFER ZONE
- 200' JURISDICTIONAL AREA
- PLAND RESTORATION REMOVAL
- WETLAND RESTORATION NETWORK
- WETLAND RESTORATION PLANS

- NOTES**
1. WETLAND AND STREAM TYPICAL OF ALL EQUIPMENT ACCESS PLAN. TO BE MAINTAINED TO SUPPORT CONSTRUCTION VEGETATION WITHIN WETLANDS. DRAINAGE OPERATIONS MUST BE LIMITED TO THE WETLANDS EXCEPT WHERE SHOWN OTHERWISE. ALL WETLANDS SHALL BE MAINTAINED IN WETLAND EXCEPT WHERE SHOWN OTHERWISE.
 2. THIS PROPOSED FOR REMOVAL, ARE BEING REMOVED OR WITHIN IS OF BEING REMOVED PROTECTED ARE SURFACES. ALL THESE EQUIPMENT AND FACILITIES IN FIELD FROM TO CONSTRUCTION.

0	100'	200'
REVISION	REVISION	DESCRIPTION
1	2022/09/25	WETLAND FLAGS UPDATED
2	2022/12/08	REVISOR PER DEN COMMENTS
3	2022/03/12	REVISOR PER DEN COMMENTS



Stantec

NEWPORT STATE AIRPORT
ROWWAY 4 WETLANDS PLAN

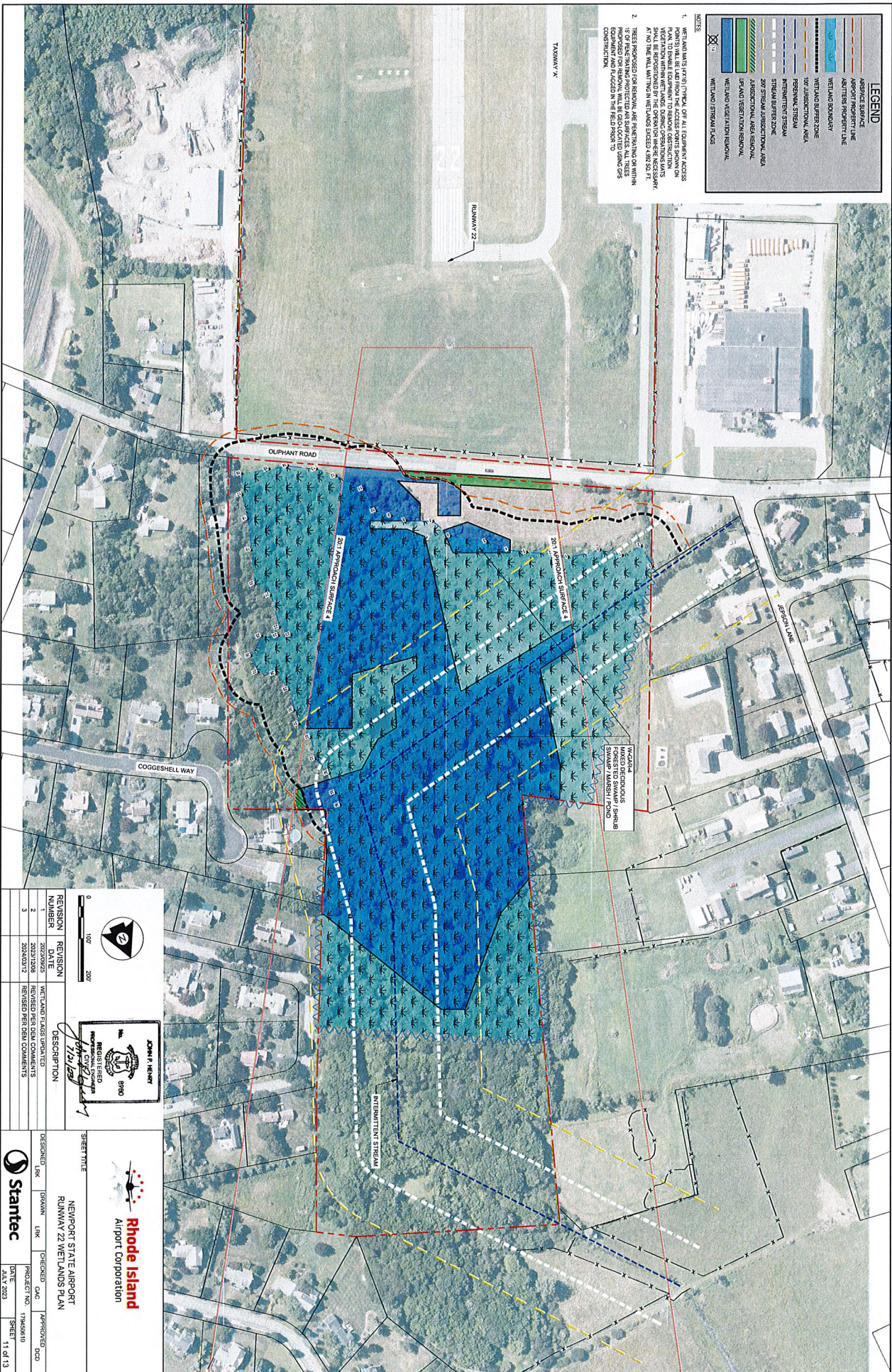
DESIGNED: LMK
CHECKED: CAC
DATE: JAN 2023

APPROVED: DDD
PROJECT NO: 179426310
SHEET: 10 OF 13

LEGEND

- ASPHALT SURFACE
- AIRPORT PROPERTY LINE
- ASPHALT PROPERTY LINE
- WETLAND BOUNDARY
- WETLAND BUFFER ZONE
- 100' JURISDICTIONAL AREA
- PERMANENT STREAM
- INTERMITTENT STREAM
- STREAM BUFFER ZONE
- 200' STREAM JURISDICTIONAL AREA
- JURISDICTIONAL AREA RESUMUAL
- UPLAND RESTORATION RESUMUAL
- WETLAND VEGETATION RESUMUAL
- WETLAND STREAM PLANS

- NOTES**
1. WETLAND AND STREAM CHANNELS IDENTIFIED ON THIS DRAWING ARE BASED ON FIELD SURVEY DATA. ADDITIONAL SURVEY DATA MAY BE REQUIRED TO VERIFY THE ACCURACY OF THE SURVEY DATA. THE DESIGNER SHALL BE RESPONSIBLE FOR VERIFYING THE ACCURACY OF THE SURVEY DATA. AT NO TIME SHALL THE WETLANDS EXCEED 1,985 SQ. FT.
 2. THESE PROPOSED WORKS ARE SUBJECT TO THE REVIEW AND APPROVAL OF THE STATE DEPARTMENT OF ENVIRONMENTAL MANAGEMENT. THE DESIGNER SHALL BE RESPONSIBLE FOR OBTAINING ALL NECESSARY PERMITS AND APPROVALS FROM THE STATE DEPARTMENT OF ENVIRONMENTAL MANAGEMENT. THE DESIGNER SHALL BE RESPONSIBLE FOR OBTAINING ALL NECESSARY PERMITS AND APPROVALS FROM THE STATE DEPARTMENT OF ENVIRONMENTAL MANAGEMENT.



0 100' 200'

JOHN P. HENRY
REGISTERED PROFESSIONAL ENGINEER
NO. 12517
STATE OF RHODE ISLAND

REVISION 1
REVISION 2
REVISION 3

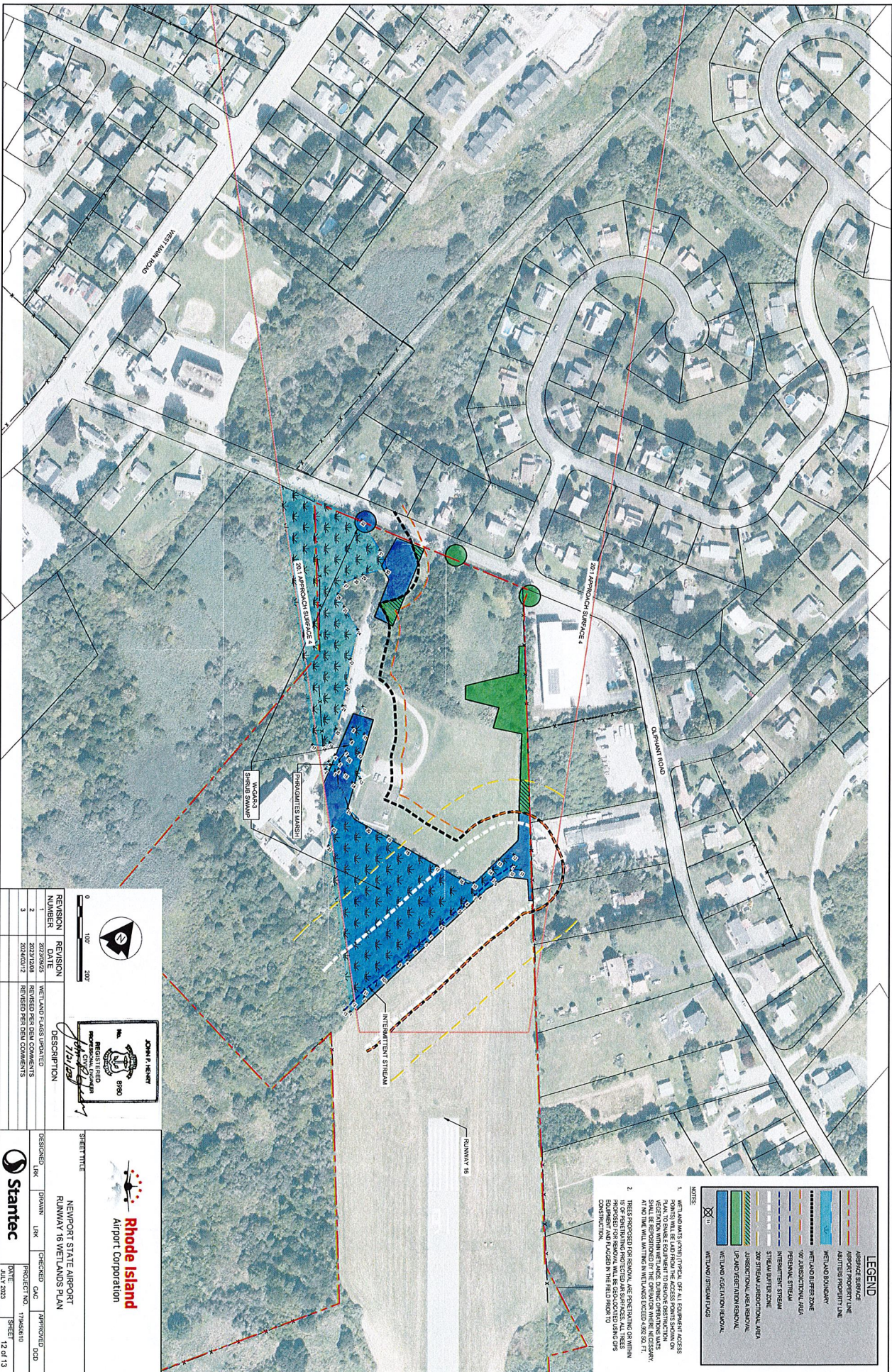
NO.	DATE	DESCRIPTION
1	2022/06/05	WETLAND FLAG UPGRADE
2	2023/12/08	REVISED PER DEN COMMENTS
3	2024/03/12	REVISED PER DEN COMMENTS

STREET TITLE
NEWPORT STATE AIRPORT
RUNWAY 22 WETLANDS PLAN

Rhode Island
Airport Corporation

DESIGNED: LMK
DRAWN: LMK
CHECKED: CAC
PROJECT NO.: 17945610
DATE: JAN 2023
SHEET: 11 OF 13

Stantec



LEGEND

- ABSENCE SURFACE
- AIRPORT PROPERTY LINE
- AUTUMN PROPERTY LINE
- WETLAND BOUNDARY
- WETLAND BUFFER ZONE
- 100' JURISDICTIONAL AREA
- PERMANENT STREAM
- INTERMITTENT STREAM
- 200' STEADY JURISDICTIONAL AREA
- JURISDICTIONAL AREA REGIONAL
- LAND VEGETATION REGIONAL
- WETLAND ACQUISITION REGION
- WETLAND STEADY FLOW

- NOTES**
1. WETLANDS (FWG) TYPICAL OF ALL EQUIPMENT ACCESS PLAN TO BE MAINTAINED TO PROTECT WETLANDS FROM VEGETATION WITH WETLANDS. DURING OPERATIONS WMS AT NO TIME SHALL WETLANDS IN WETLANDS EXCEED 1000 FT.
 2. PRESS REPORTS FOR REGIONAL, ARE PENDING ON WMS FOR REGIONAL, WMS WILL BE CONDUCTED DURING CONSTRUCTION. WMS 11/15/2023 REGION 19

REVISION

NUMBER	REVISION
1	2023/09/25
2	2023/12/08
3	2024/03/12

DESCRIPTION

1	WETLAND FLAGS UPDATED
2	REVISED PER DEN COMMENTS
3	REVISED PER DEN COMMENTS

REGISTERED

JOHN P. HENRY
Professional Engineer
No. 1717
1990

SHEET TITLE

NEWPORT STATE AIRPORT
RUNWAY 16 WETLANDS PLAN

DESIGNED LINK
DRAWN LINK
CHECKED GAC
PROJECT NO. 17360610
DATE JULY 2023
SHEET 12 OF 13

Rhode Island
Airport Corporation

Stantec

