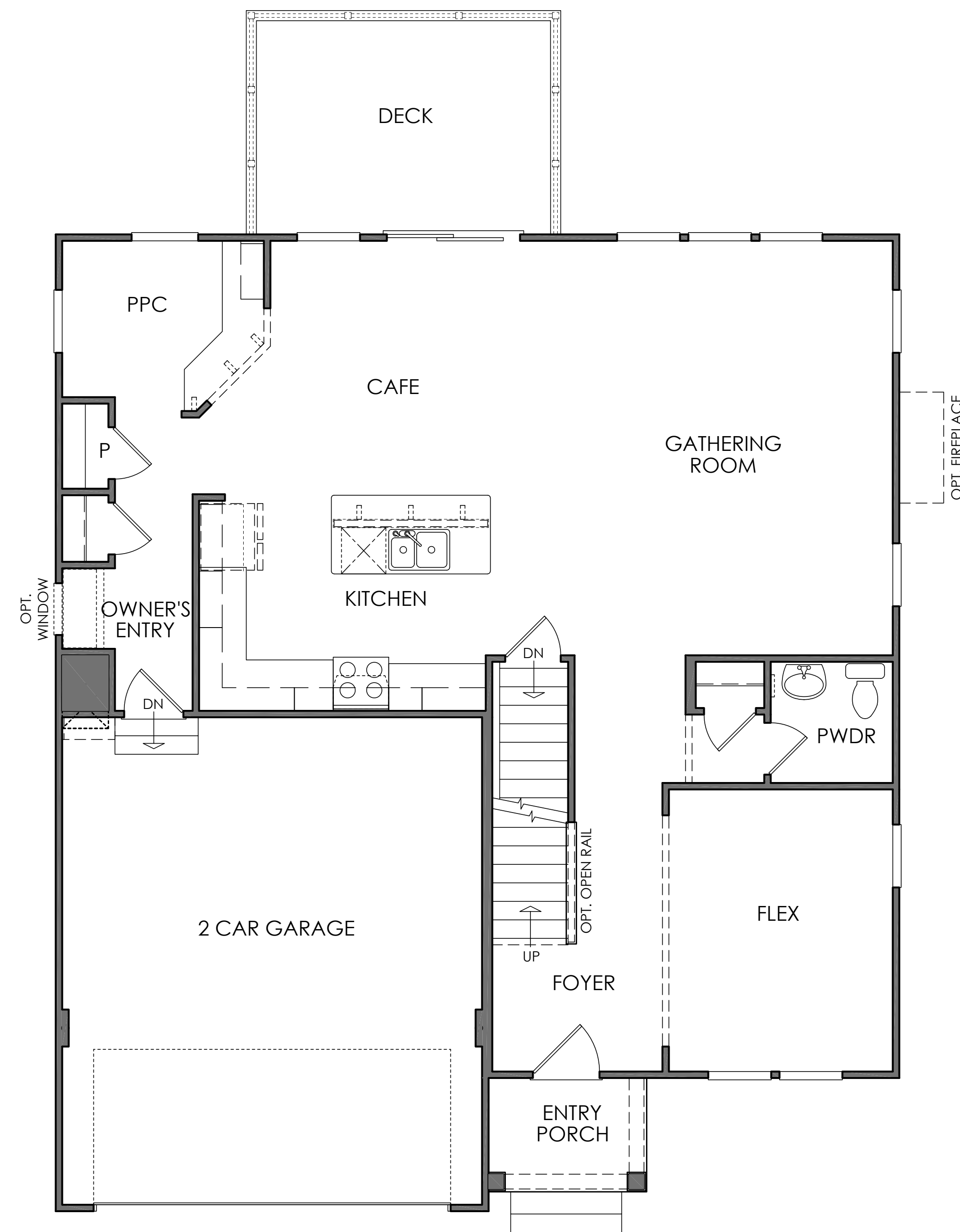
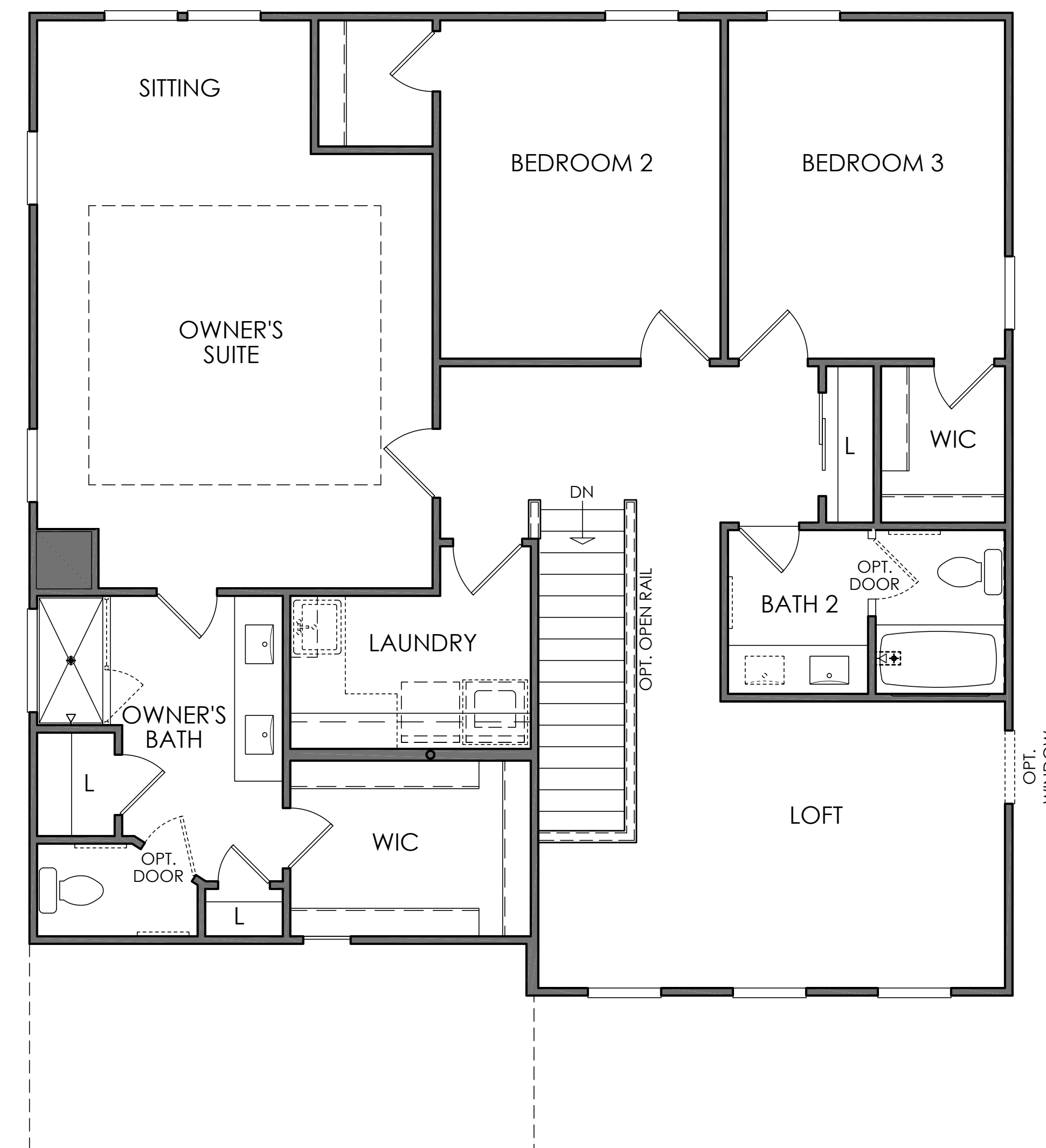


# PRESCOTT POINT



First Floor

BUILDING FOOTPRINT AREA = 1,691 SF



Second Floor

# PRESCOTT POINT

NOTE:  
OPT. WINDOWS SHOWN DASHED, TYP.



LEFT SIDE ELEVATION - ELEV. # 1  
1/8"=1'-0"



FRONT ELEVATION - ELEV. # 1  
1/8"=1'-0"

NOTE:  
OPT. WINDOWS SHOWN DASHED, TYP.



RIGHT SIDE ELEVATION - ELEV. # 1  
1/8"=1'-0"



REAR ELEVATION  
1/8"=1'-0"

NOTE:  
OPTIONAL DAYLIGHT & WALK-OUT  
BASEMENT CONDITION AS GRADING ALLOWS



FRONT ELEVATION - ELEV. # 2  
1/8"=1'-0"



FRONT ELEVATION - ELEV. # 3  
1/8"=1'-0"

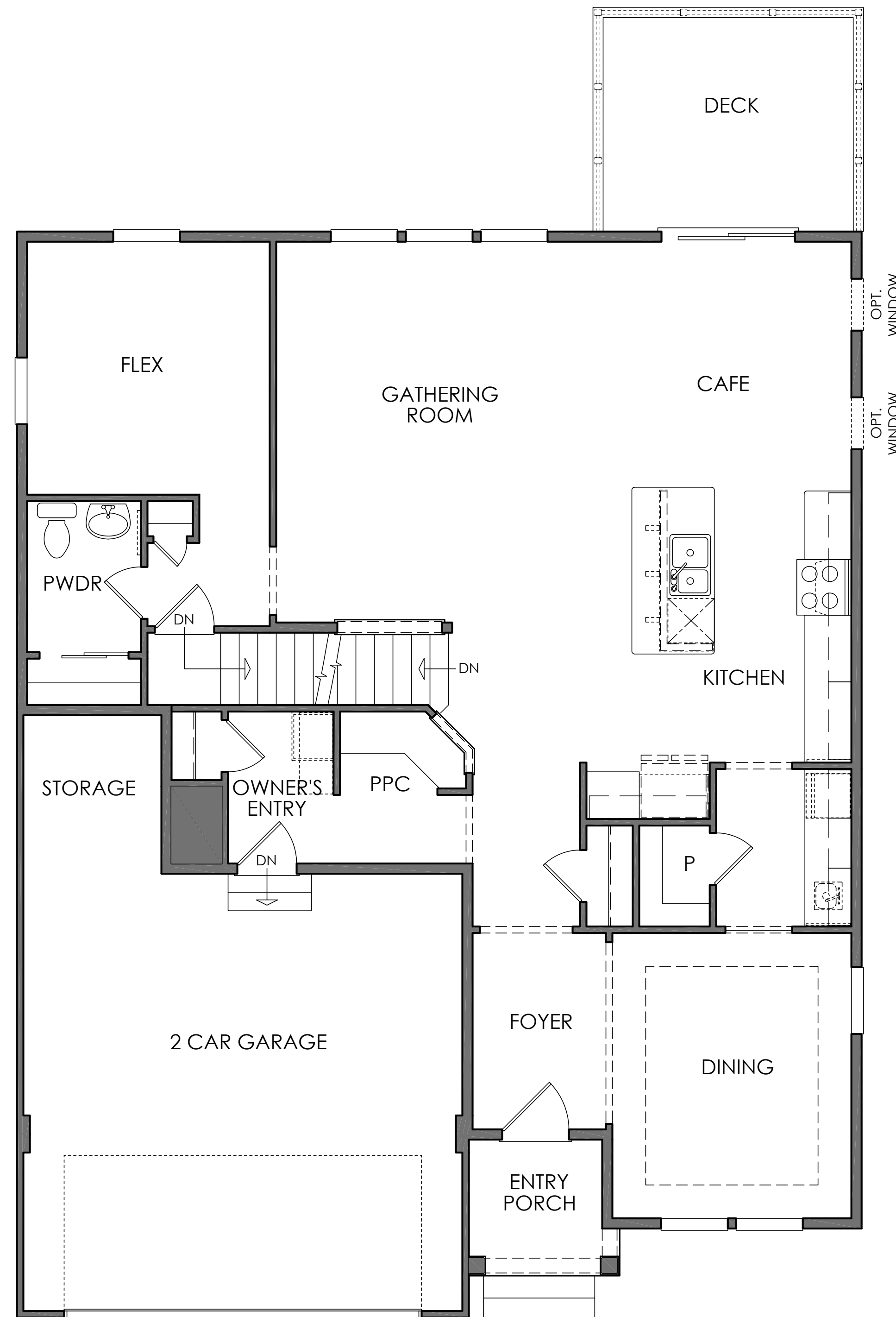


FRONT ELEVATION - ELEV. # 4  
1/8"=1'-0"



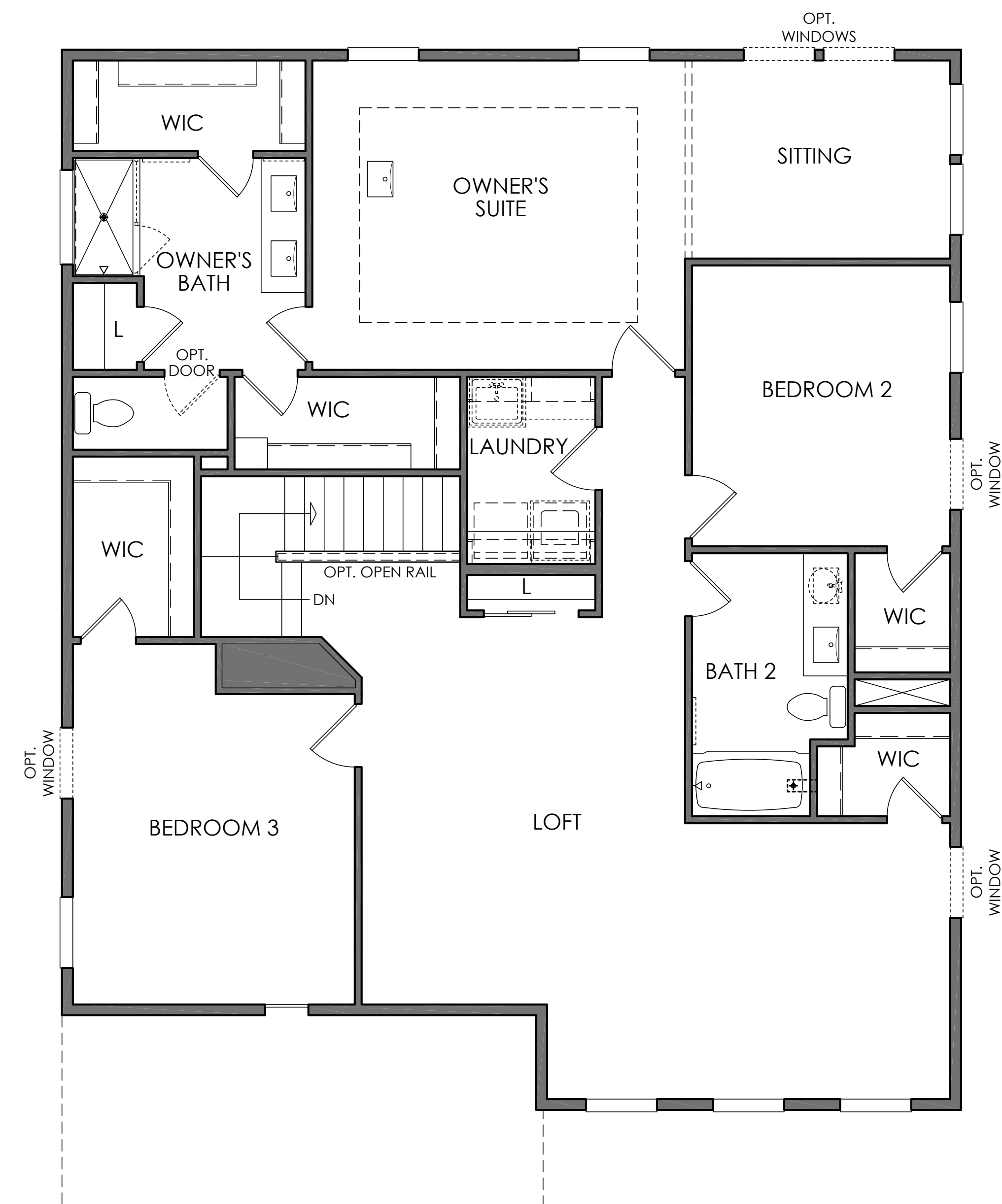
FRONT ELEVATION - ELEV. # 5  
1/8"=1'-0"

# PRESCOTT POINT



First Floor

BUILDING FOOTPRINT AREA = 1,798 SF



Second Floor

# PRESCOTT POINT



LEFT SIDE ELEVATION - ELEV. # 1  
1/8"=1'-0"



FRONT ELEVATION - ELEV. # 1  
1/8"=1'-0"



RIGHT SIDE ELEVATION - ELEV. # 1  
1/8"=1'-0"



REAR ELEVATION  
1/8"=1'-0"

NOTE:  
OPTIONAL DAYLIGHT & WALK-OUT  
BASEMENT CONDITION AS GRADING ALLOWS



FRONT ELEVATION - ELEV. # 2  
1/8"=1'-0"



FRONT ELEVATION - ELEV. # 3  
1/8"=1'-0"

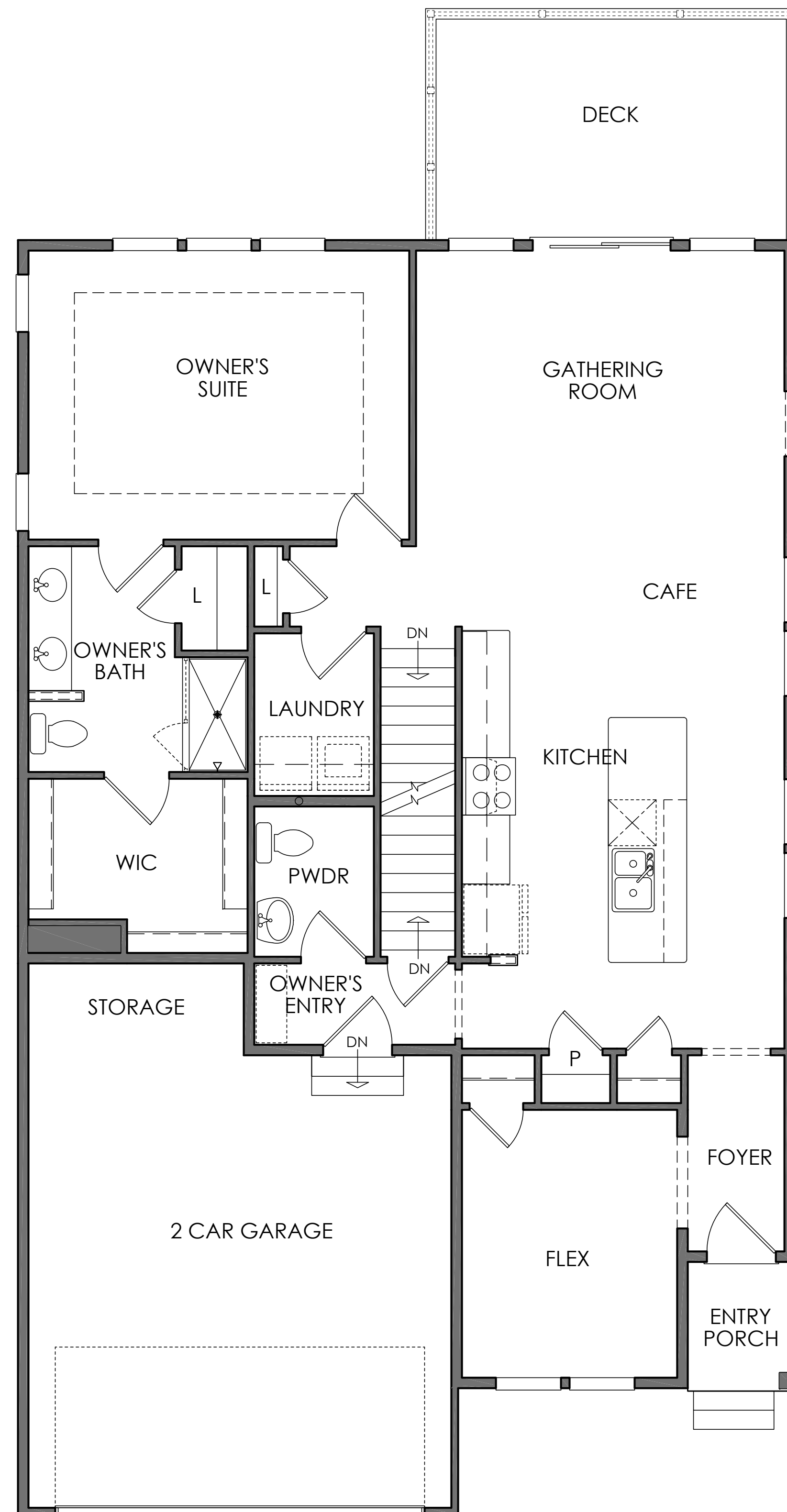


FRONT ELEVATION - ELEV. # 4  
1/8"=1'-0"



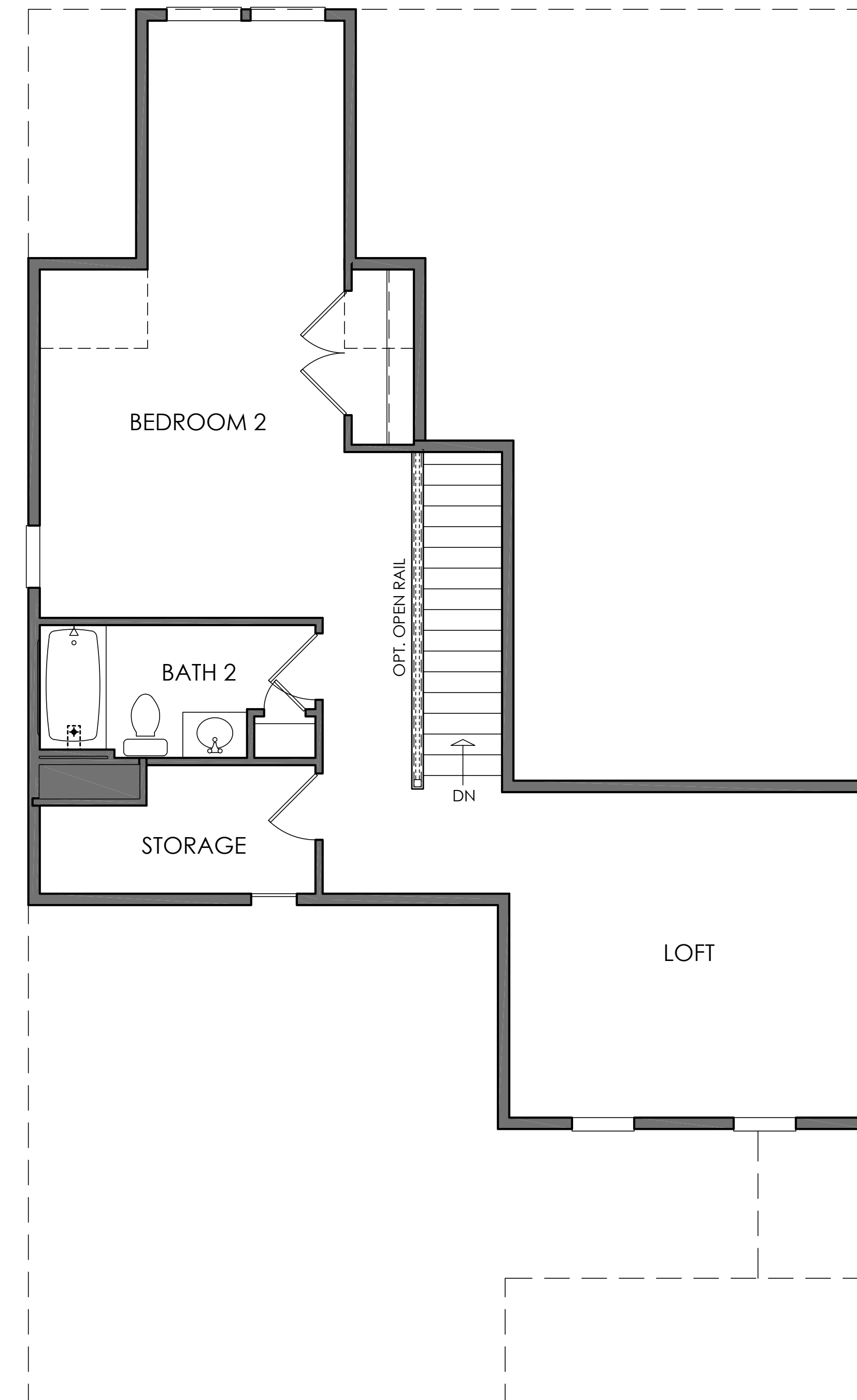
FRONT ELEVATION - ELEV. # 5  
1/8"=1'-0"

# PRESCOTT POINT



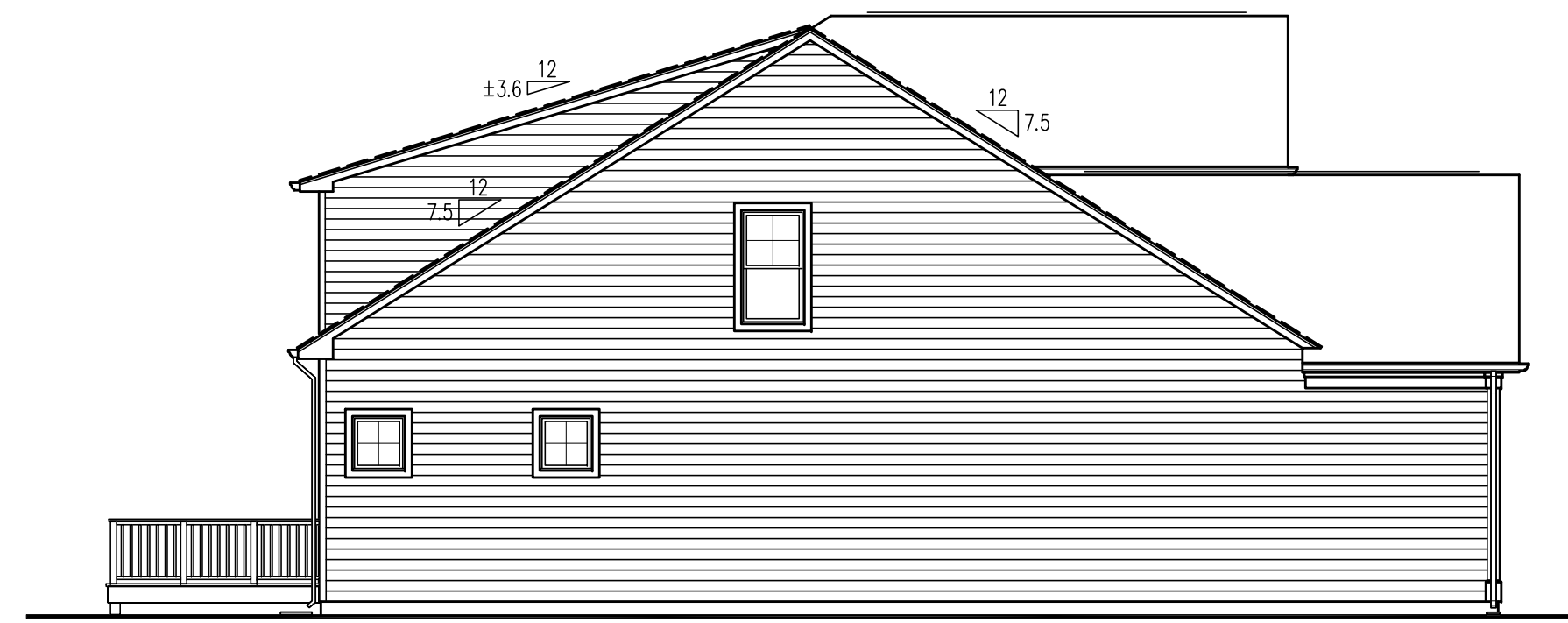
First Floor

BUILDING FOOTPRINT AREA = 1,797 SF



Second Floor

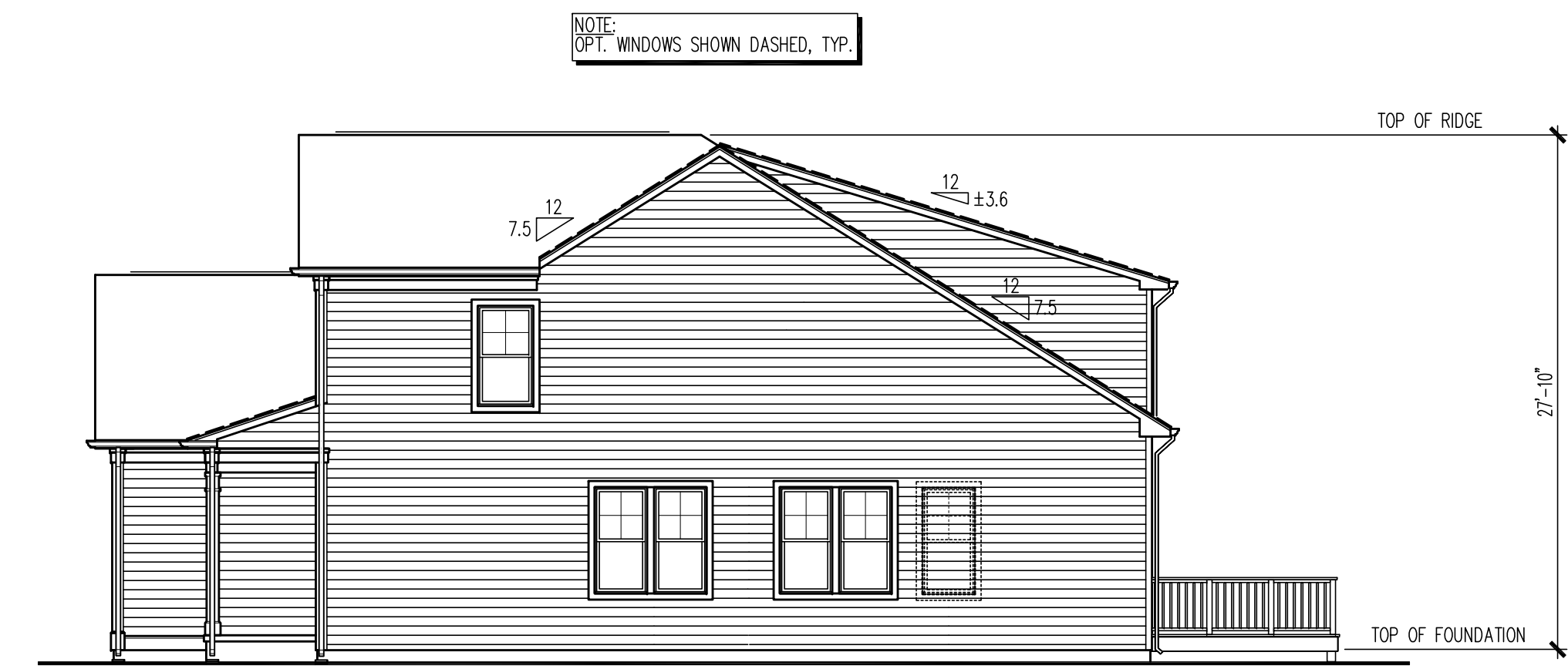
# PRESCOTT POINT



LEFT SIDE ELEVATION - ELEV. # 1  
1/8"=1'-0"



FRONT ELEVATION - ELEV. # 1  
1/8"=1'-0"



RIGHT SIDE ELEVATION - ELEV. # 1  
1/8"=1'-0"



REAR ELEVATION  
1/8"=1'-0"



FRONT ELEVATION - ELEV. # 2  
1/8"=1'-0"

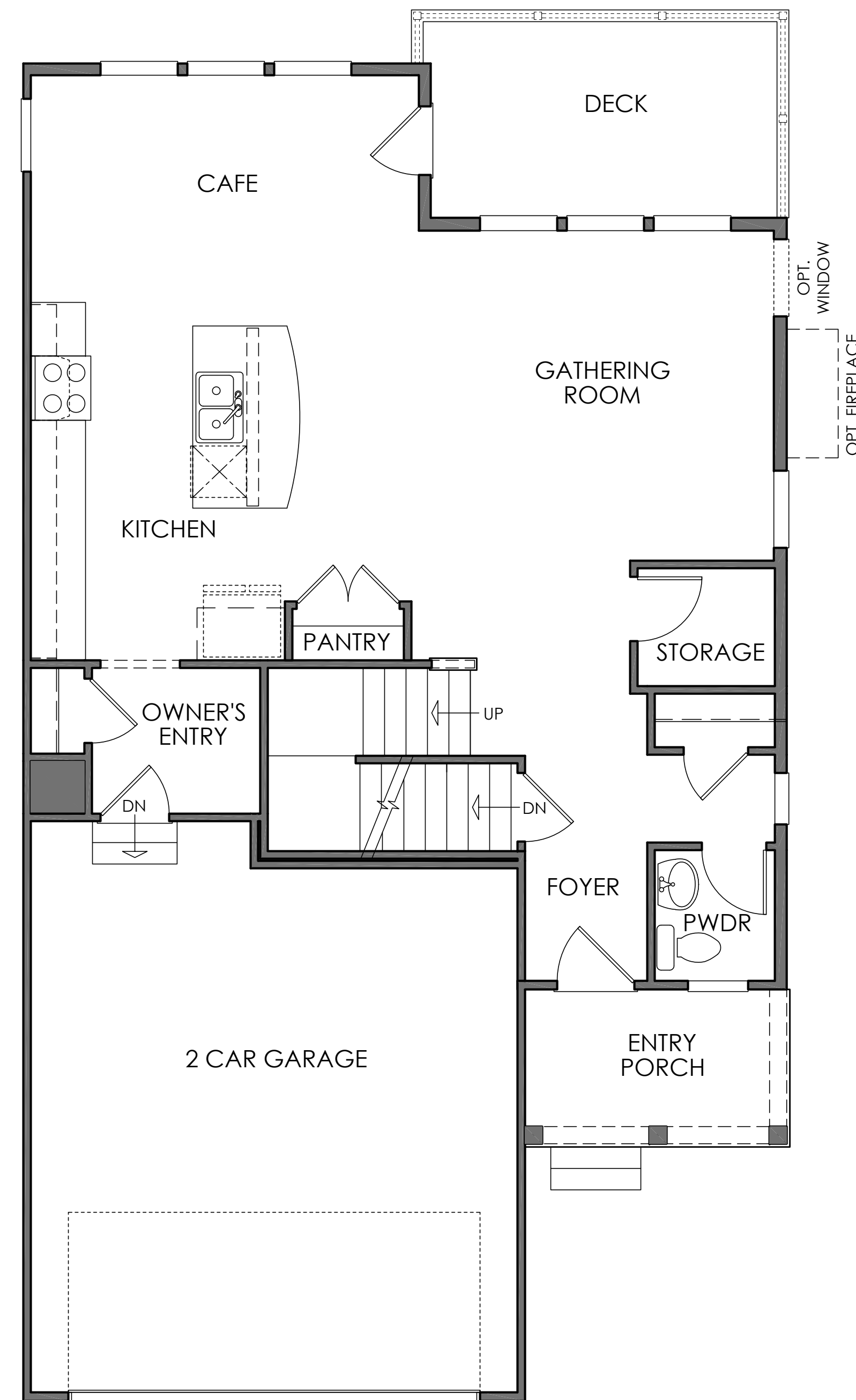


FRONT ELEVATION - ELEV. # 3  
1/8"=1'-0"



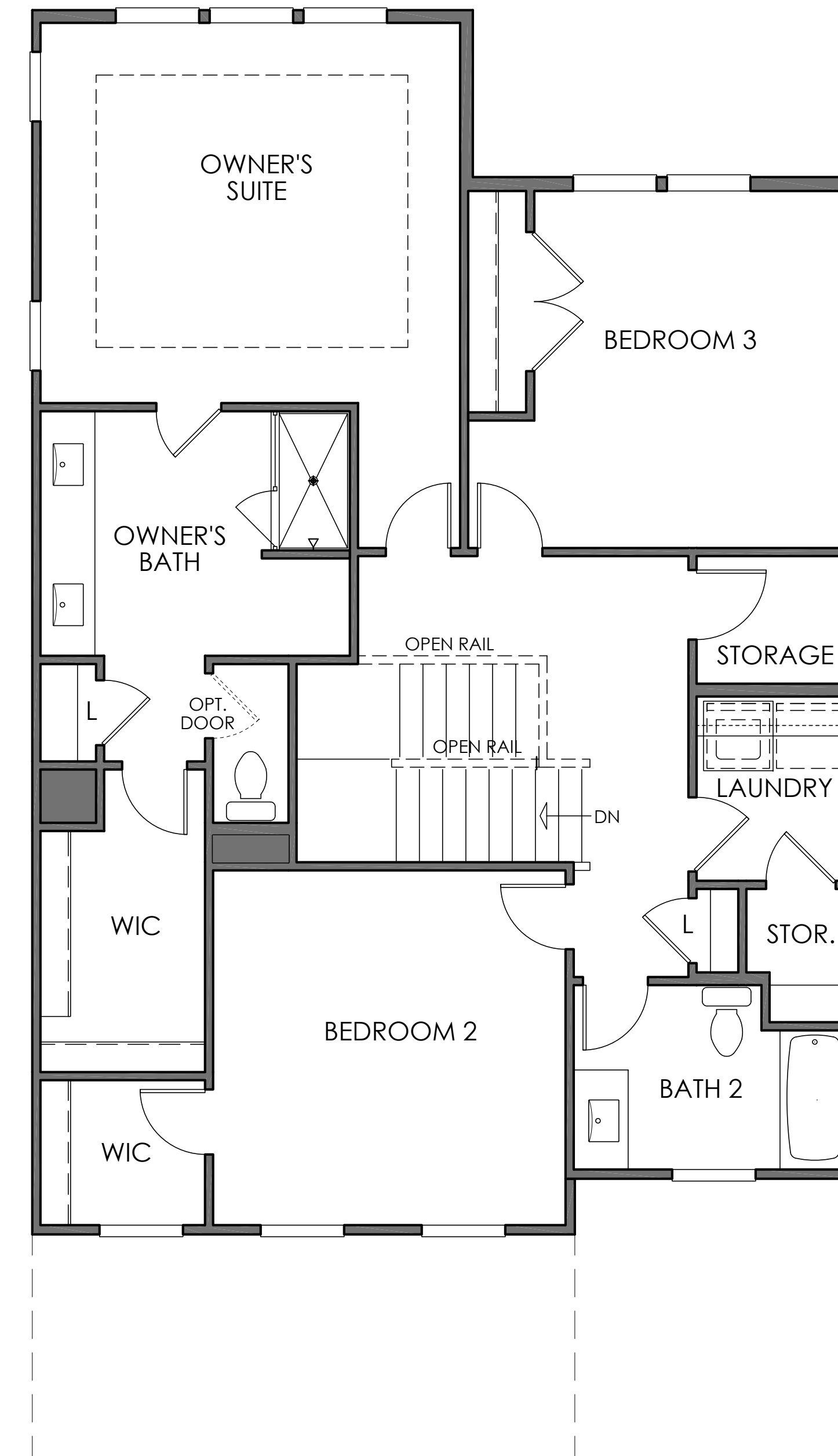
FRONT ELEVATION - ELEV. # 4  
1/8"=1'-0"

# PRESCOTT POINT



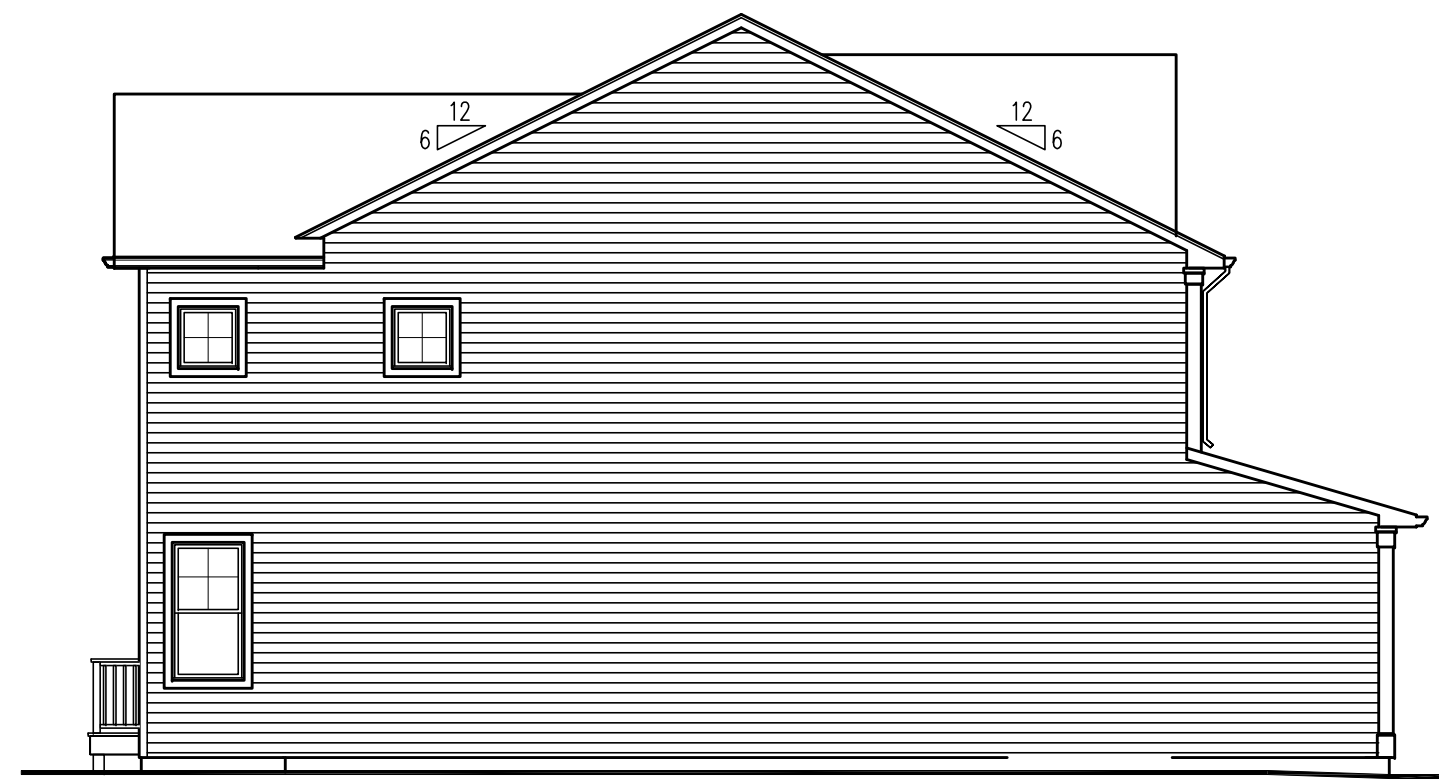
First Floor

BUILDING FOOTPRINT AREA = 1,373 SF



Second Floor

# PRESCOTT POINT



LEFT SIDE ELEVATION - ELEV. # 1  
1/8"=1'-0"



FRONT ELEVATION - ELEV. # 1  
1/8"=1'-0"



RIGHT SIDE ELEVATION - ELEV. # 1  
1/8"=1'-0"



REAR ELEVATION  
1/8"=1'-0"

NOTE:  
OPTIONAL DAYLIGHT & WALK-OUT  
BASEMENT CONDITION AS GRADING ALLOWS

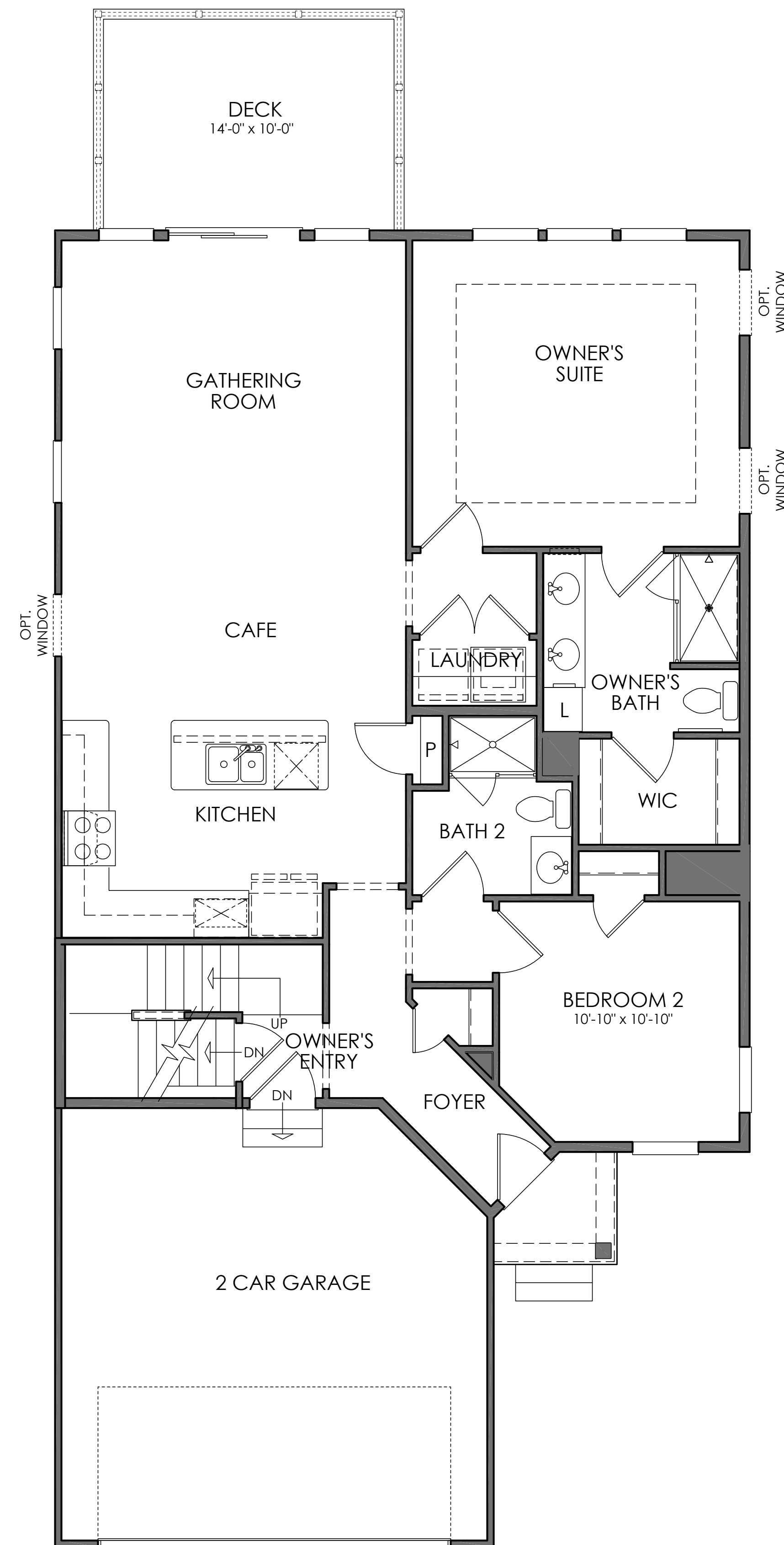


FRONT ELEVATION - ELEV. # 2  
1/8"=1'-0"



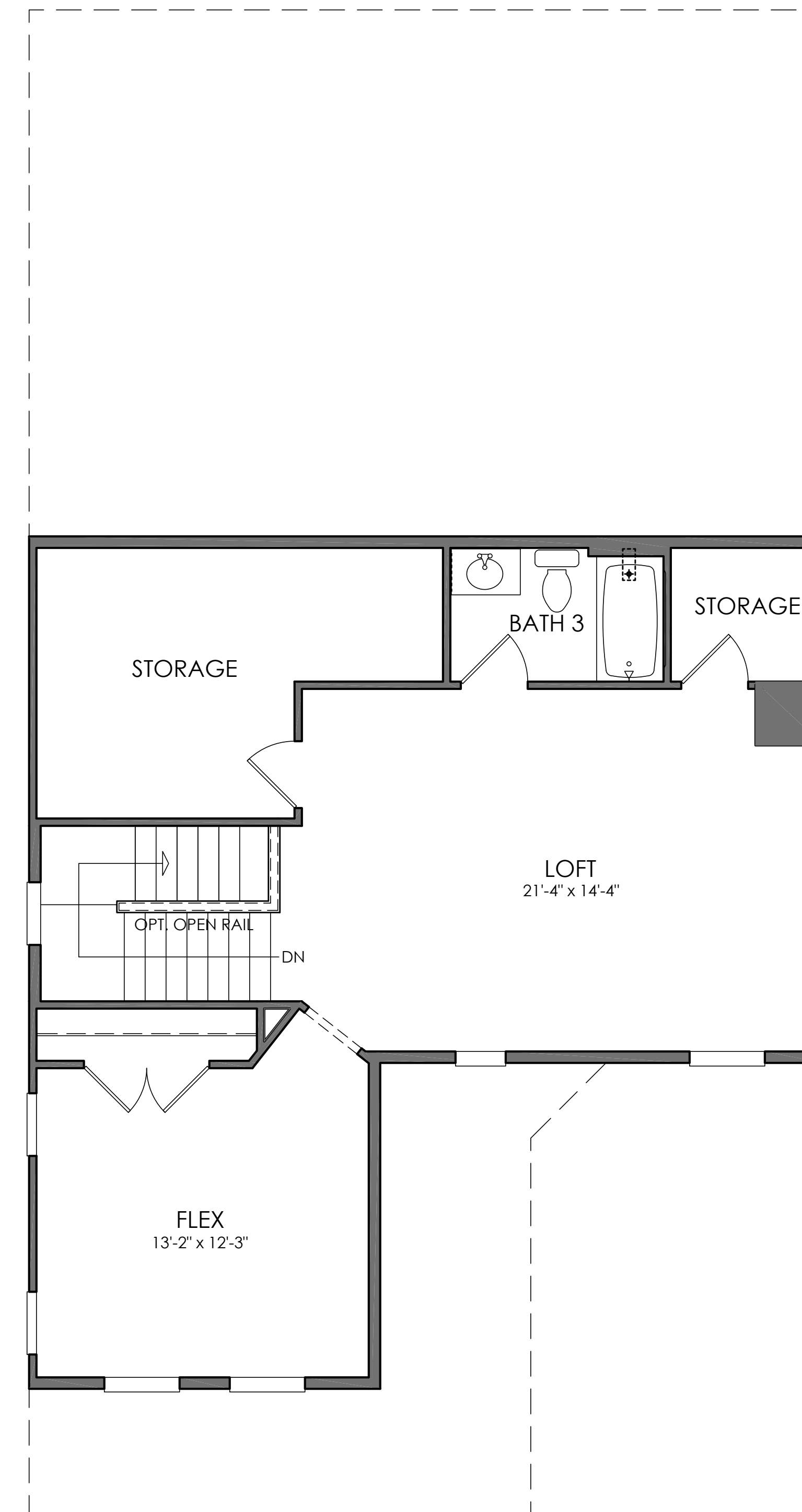
FRONT ELEVATION - ELEV. # 3  
1/8"=1'-0"

# PRESCOTT POINT



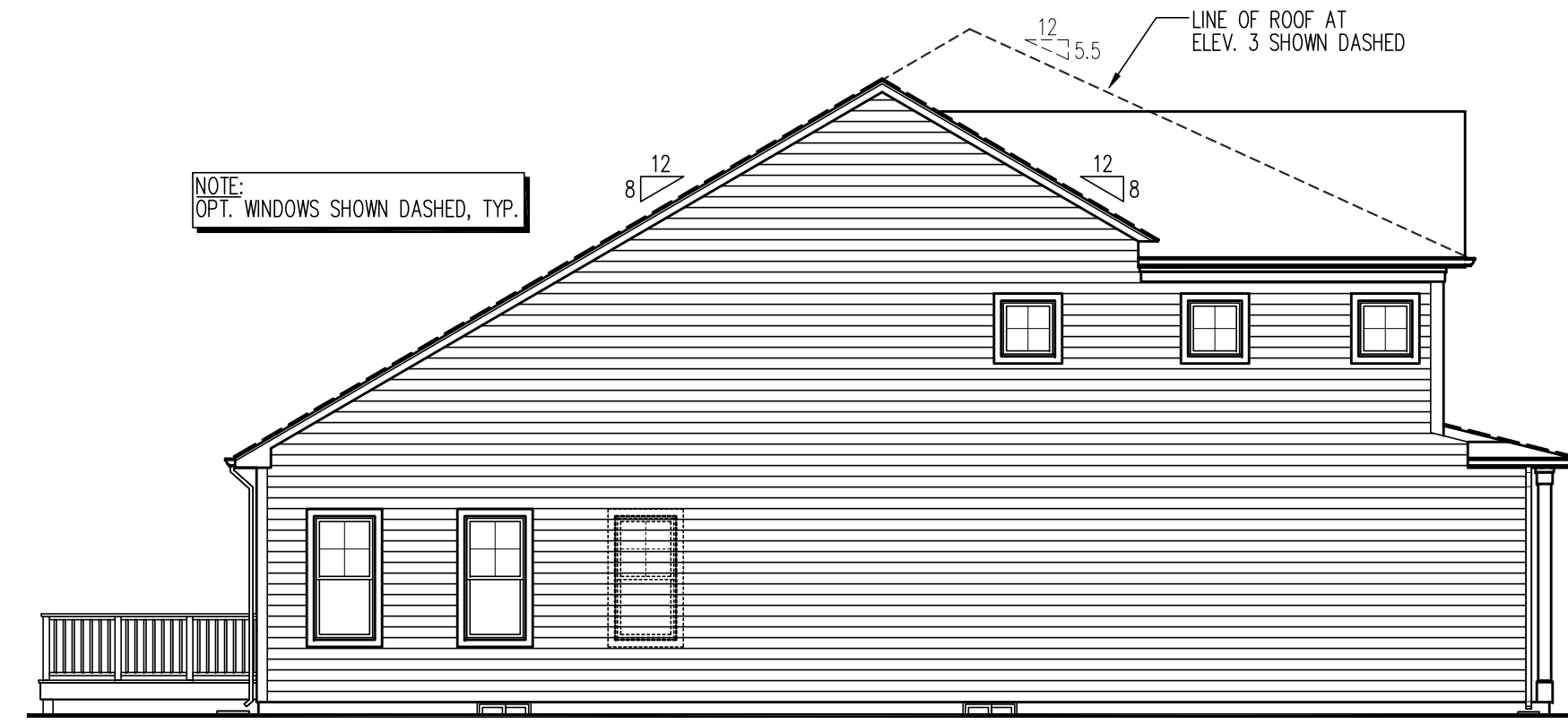
First Floor

BUILDING FOOTPRINT AREA = 1,778 SF



Second Floor

# PRESCOTT POINT



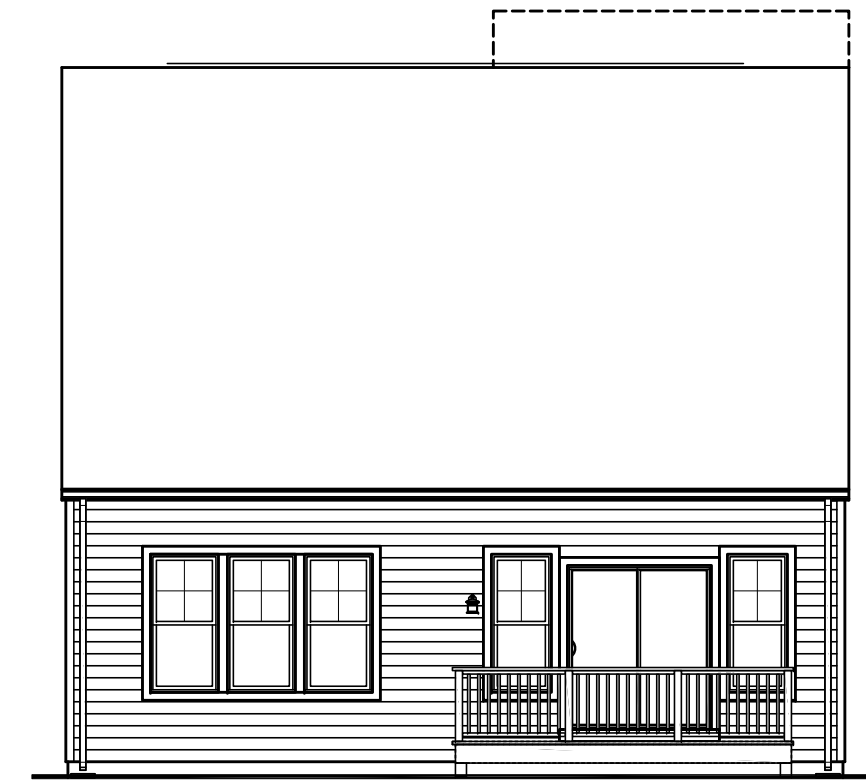
LEFT SIDE ELEVATION - ELEV. # 1  
1/8"=1'-0"



FRONT ELEVATION - ELEV. # 1  
1/8"=1'-0"



RIGHT SIDE ELEVATION - ELEV. # 1  
1/8"=1'-0"



REAR ELEVATION  
1/8"=1'-0"



FRONT ELEVATION - ELEV. # 2  
1/8"=1'-0"



FRONT ELEVATION - ELEV. # 3  
1/8"=1'-0"



FRONT ELEVATION - ELEV. # 4  
1/8"=1'-0"

## TUSCAN